



821 Westwood Industrial Park Dr.

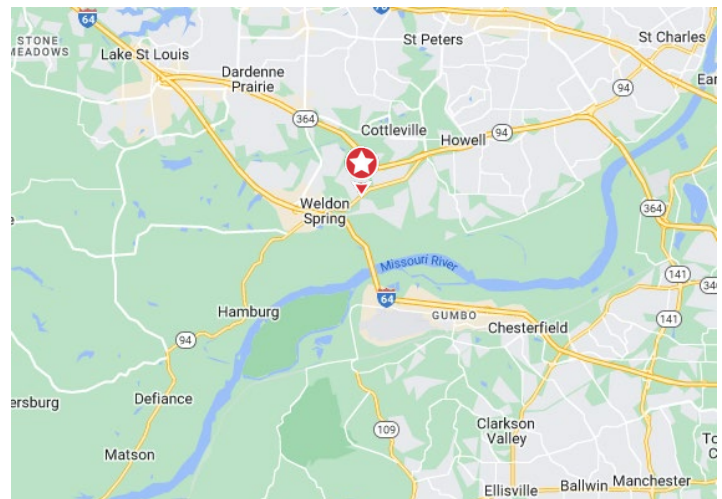
Weldon Spring, MO 63304

Property Features

- Warehouse Space
- 1 Bathroom
- 24' Clear Ceiling Height
- Wet Sprinklered
- 480, 277 3-phase (Heavy Power)
- 2 Truck-High Loading Docks
- 2 Large Drive-In Doors
- Built in 2008
- New TPO Roof in 2016
- Owner may consider a lease
- Also for Sale: 56,366 SF For Sale at 830 Westwood Industrial Park Drive

REDUCED Sale Price:

~~\$6,075,000~~ **\$5,600,000**



For more information:

Kevin McKeon, CCIM

314 994 4287 Direct • 314 517 6739 Mobile
kmckeon@naidesco.com

S 25 54° 10' E 258.21'

10' W EASEMENT

28'-0"

227'

PROPOSED BUILDING
50,621 S.F.

225'

S 64 07° 15' W 3 960.0'

S 64 07° 15' W 3 960.0'

15' W EASEMENT

15' W EASEMENT

7'-6" 7'-6"

7'-6" 7'-6"

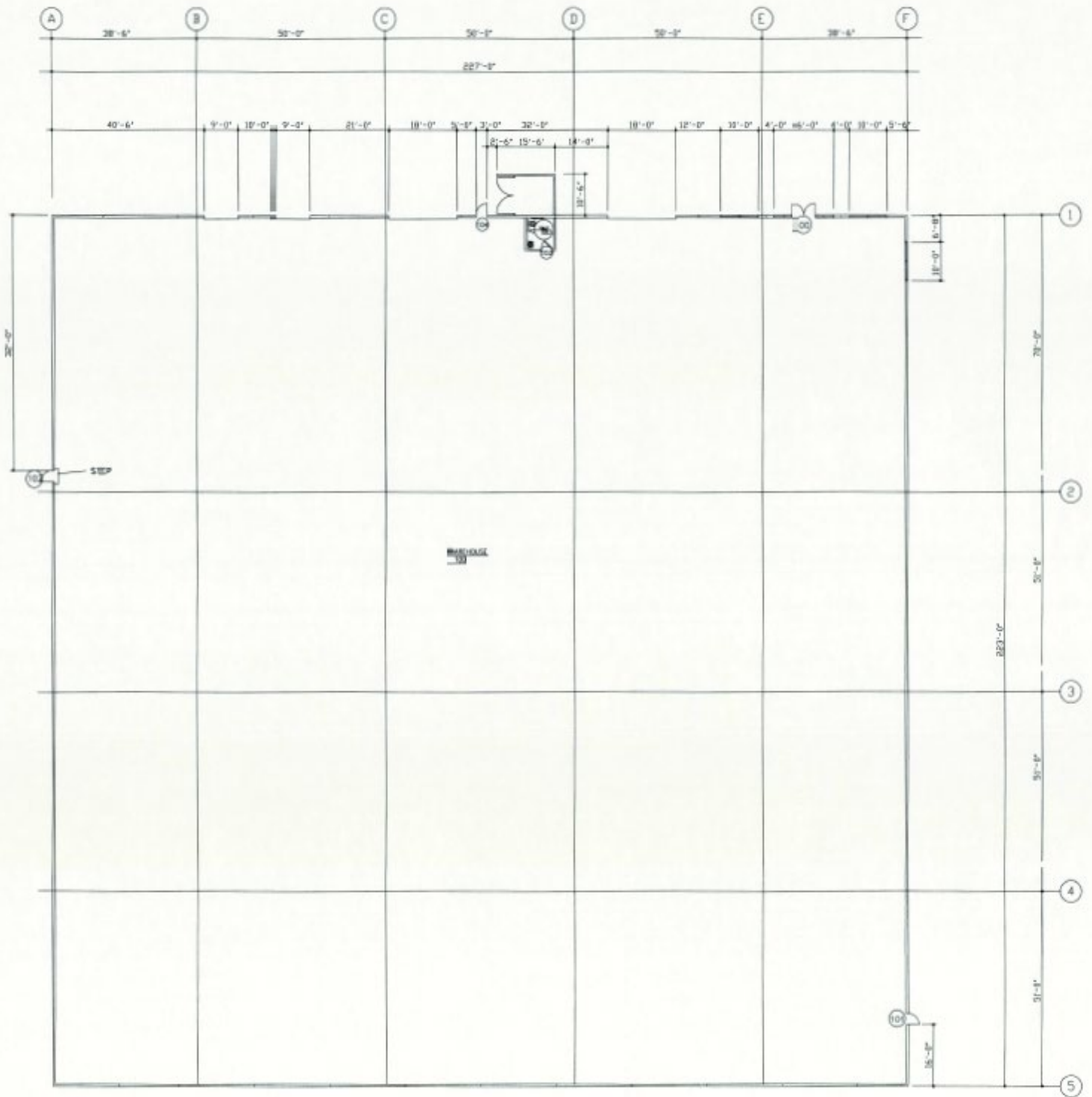
ENCLOSURE
TYPICAL

35' BUILDING LINE

20' W EASEMENT

S 25 52° 45' E 258.21'

WESTWOOD INDUSTRIAL PARK DRIVE (60' W)



1 FIRST FLOOR PLAN
A-2 1/16"=1'-0"



Interior Photos

