



Annual Report

MS4

City of Weldon Spring
February 2022
Bill J. Schnell, P.E.

2021

Contents

City of Weldon Spring.....	3
What's New?.....	4
Outfall Tracing Spreadsheet	4
COVID 19 IMPACTS – 2 nd Year.....	5
MS4 Scavenger Hunt – Continued in 2021.....	5
Focus on the Environment.....	8
The Six Minimum Control Measures (MCM #1-6).....	9
Acronyms & Definitions	10
Roles and Responsibilities	12
Public Education and Outreach (MCM#1).....	13
Public Participation/Involvement (MCM#2).....	16
Illicit Discharge Detection and Elimination (MCM#3).....	19
Post-Construction Runoff Control (MCM#5)	26
Pollution Prevention/Good Housekeeping (MCM#6).....	29
Stormwater Discharge Locations	32
Outfall Tracing Guide – <i>new 2021</i>	40
Forms and Checklists.....	41
MS4 Educational Handouts.....	49
Door Hanger.....	51
MS4 PowerPoints and Presentations.....	54
City Ordinances	63
2021 MS4 Log.....	64

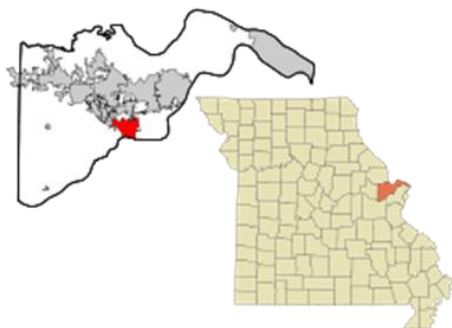
City of Weldon Spring

Weldon Spring was established in 1864 and took its name from a small spring of the same name near the original town site. Weldon Spring is located 27 miles west-northwest of St. Louis on the rolling hills of south-central St. Charles County.



Outfalls from the City go to both the Missouri River and the Mississippi River. These prominent rivers have significant physical influence on the City's geography. The Missouri River creates the southern boundary of the city, and the Mississippi River lies just a short distance to the north of the city. As a result, Weldon Spring possesses some of the highest ridges in St. Charles County.

The city prides itself in the rural roots and has worked hard to preserve the natural elements of the city. The City's Comprehensive Plan focuses on conservation of the City's natural resources, the preservation of area's rural character, the enhancement of existing land uses within the city and expanding residential, commercial, and high-tech areas of the city pursuant to this Plan.



The overall feel and image of the city is that of a suburban, low density residential area surrounded by open pastures and fields that give way to rolling fields and woods toward the Missouri River. containing wooded areas, open fields, steep ravines, and floodplains as well as several significant commercial and industrial areas.

The City of Weldon Spring is one of the smaller Cities in St. Charles County by land size and population ranking 6th. According to the United States Census Bureau, the city has a total area of 7.64 square miles, of which 7.51 square miles is land and 0.13 square miles is water.

Weldon Spring had an estimated population of 5,443 residents. There are currently an estimated 200 commercial and home-based businesses within the city, 35 percent of which are estimated to be storefront businesses and 65 percent of which are estimated to be home-based. There is a commercial component of the City along State Highway 94 and a high-tech component along Interstate 64 (I-64). The city has a very small industrial area along Route 94 near O'Fallon Road.

What's New?

New MS4 Permit Cycle

During 2021 the City of Weldon Spring Participated in the web-based training on the new permit renewal.

After attending all the sessions and discussing with Sarah Wright of MoDNR, the city decided to pursue the **Comprehensive Plan** for our permit renewal.

The focus in 2021 was understanding the new permit requirements and making adaptive changes to develop a new Stormwater Management Plan for the City of Weldon Spring compliant with the new regulations.



Outfall Mapping Updates

The City of Weldon Spring contracted with a consulting engineering company (St. Charles Engineering) to develop a map of all the outfalls in the City. The map was inclusive of many pipes and culvert ends that were very useful to track the stormwater system, but they were not all “outfalls” for the purpose of MS4 inspections. During 2021 this map and an excel spreadsheet continued to be refined to identify which pipe ends are truly “outfalls” and to determine which ones the city is responsible to inspect.

Unique to Weldon Spring is the number of privately maintained streets and storm sewer and detention basin improvements. Many of the streets and most of the detention/retention basins and lakes in the City of Weldon Spring are **privately owned and maintained**. An excel spreadsheet is utilized to determine which outfalls are maintained by the city for dry weather inspections. The map and spreadsheet are used during dry weather outfall inspections.

Outfall Tracing Spreadsheet

In the event of a spill or illicit discharge, the during 2021 the city also developed an **outfall tracing guide**. This shows in a graphic form, what outfall each subdivision ultimately drains to. This also assists to determine high priority outfalls to inspect more frequently.

COVID 19 IMPACTS – 2nd Year

The year 2021 continued having with many challenges due to a worldwide pandemic. Like every state agency, the City of Weldon Spring, Missouri has experienced its share of challenges during the past year as public participation at events has been limited following national CDC recommendations. Like everyone else, we've learned from those challenges.

Early in the COVID-19 pandemic, the city shut down all work at City Hall and eliminated all in-person meetings with the public. Work hours were reduced to a minimum and all employees worked remotely. This was a challenge, as a small city with part-time staff does not have the same technology as larger agencies.

Numerous annual events that have been part of our MS4 plan in previous years for Public Education and Outreach and Public Participation / Involvement had to be cancelled or modified to limit crowds. During 2021 both the Delta and Omicron variants emerged, once again reducing public gatherings. The city is hopeful to add back more public participation events when the virus impacts subside.



MS4 Scavenger Hunt – Continued in 2021

The public was also often confined to their residences which led to a significant increase in the use of the City Park and trails. With more residents walking and exploring our Parks and Trails, using some creativity an “MS4 Scavenger Hunt” was added as a replacement event. This was available to be downloaded online from the city website. The city had the scavenger hunt advertised in the City Newsletter during 2020 and sent to every home and business. While not providing the same “in person” education and participation events the city planned to host, the MS4 Scavenger Hunt was well received by residents. The city was contacted by a schoolteacher on the east coast appreciative of the information on the city website. While COVID-19 may have impacted our original plans, by innovation a new BMP was created to make the best of the situation.

During 2021, the MS4 Scavenger Hunt forms were placed in a new outdoor display and restocked with a total of 23 forms being taken from the display box.



Name: _____

Date: _____

Weldon Spring, Missouri MS4 Environmental Scavenger Hunt

This is a fun scavenger hunt you can do in the City of Weldon Spring! Look around our park and your neighborhood when you are out walking with your family. **Make sure to keep your social distance and don't touch anything!** Try to find everything on this sheet. Some may be easy to find, and others may be a little harder to spot. The items below are all good for the environment!

The Flowering Dogwood is Missouri's state tree. Look for white flowers in the Spring! Planting native trees is good for the environment.


☐

Covered trash cans help to keep litter out of our storm water system, streams and rivers. Throw your trash away into a covered trash to help keep our environment clean and healthy. Weldon Spring has installed new trash cans and pet waste disposal bags. Can you spot them?


☐

Storm drains catch runoff from the roads and flows into our streams. Weldon Spring has new manhole covers warning "No dumping—Drains to Stream". Can you spot one of these?


☐

Wildlife is part of a healthy environment. Squirrels help to plant native oak trees, as they forget where they bury all of their acorns! Can you spot a fish, squirrel, rabbit, bird or deer?


☐

Detention basins can be found in most of our subdivisions. They capture water after a big rain and slowly release it into our local streams. This helps to prevent erosion and flooding.


☐

Streams collect the rain and ground water runoff in our area and then flows to the Missouri or Mississippi Rivers. Our drinking water normally comes from these two rivers. Keeping the water clean is important for all of us to stay healthy!


☐



Weldon Spring Environmental Scavenger Hunt

The following are **HARMFUL** to our environment! Hopefully you don't find many of these items in our City. If you do, please discuss with your parents/guardians what can be done to make it better. Wearing the proper protective clothing and gloves, there are volunteer opportunities each year to make our community better: removing trash from streams, removing invasive bush honeysuckle, etc.

The water we drink normally comes from the local rivers.
Trash or litter in a creek or stream is bad for everyone!



Creek erosion causes silt to flow into our streams and rivers.
This is bad for the environment and is harmful to property.



Bush honeysuckle is not a native species. It chokes out other plants and leads to erosion and loss of habitat.



Plastic water bottles aren't the best for the environment.
A better choice is a reusable cup or bottle. If you do use these bottles, make sure to recycle.



Oil stains on a driveways means a vehicle is leaking and needs repair. This can run off into our streams and contaminate our drinking water.



Litter should always be placed in a covered trash can. Litter pollutes the environment and needs to be properly disposed.





Keeping the environment and water clean is a top priority in Weldon Spring. During 2021, 2,500 pet waste disposal bags were utilized in the city.

The **Katy Trail State Park** is a state park that contains the Katy Trail, the country's longest recreational rail trail. It runs 240 miles, largely along the northern bank of the Missouri River, in the right-of-way of the former Missouri–Kansas–Texas Railroad. The trail runs parallel to the City border along the Missouri River in this mostly undeveloped riparian area along this great river.

Focus on the Environment

The natural setting and beauty of Weldon Spring is enhanced further by several very popular parks. The City logo sign stresses the importance of the rivers and natural setting.

The City is fortunate to have three unique parks to help enjoy the natural environment.

Weldon Spring City Hall and Park is uniquely part of an older estate home. Today the City Hall is located in the former residence surrounded by a small pond, playground and trails.

Veteran's Tribute Park is the newest St. Charles County Park located in the City. It features two



The Six Minimum Control Measures (MCM #1-6)

1. Public Education and Outreach

Distributing educational materials and performing outreach to inform citizens about the impacts polluted stormwater runoff discharges can have on water quality.

2. Public Participation/Involvement

Providing opportunities for citizens to participate in program development and implementation, including effectively publicizing public hearings and/or encouraging citizen representatives on a stormwater management panel.

3. Illicit Discharge Detection and Elimination

Developing and implementing a plan to detect and eliminate illicit discharges to the storm sewer system (includes developing a system map and informing the community about hazards associated with illegal discharges and improper disposal of waste).

4. Construction Site Runoff Control

Developing, implementing, and enforcing an erosion and sediment control program for construction activities that disturb 1 or more acres of land (controls could include silt fences and temporary stormwater detention ponds).

5. Post-Construction Runoff Control

Developing, implementing, and enforcing a program to address discharges of post-construction stormwater runoff from new development and redevelopment areas. Applicable controls could include preventative actions such as protecting sensitive areas (e.g., wetlands) or the use of structural BMPs such as grassed swales or porous pavement.

6. Pollution Prevention/Good Housekeeping

Developing and implementing a program with the goal of preventing or reducing pollutant runoff from municipal operations. The program must include municipal staff training on pollution prevention measures and techniques (e.g., regular street sweeping, reduction in the use of pesticides or street salt, or frequent catch-basin **cleaning**).

Acronyms & Definitions

MoDNR	Missouri Department of Natural Resources
BMP	Best Management Practice
EPA	Environmental Protection Agency
GIS	Geographic Information Systems
IDDE	Illicit Discharge Detection & Elimination
MCM	Minimum Control Measure
MEP	Maximum Extent Possible
MS4	Municipal Separate Storm Sewer System
NPDES	National Pollutant Discharge Elimination System
SWMP	Storm Water Management Program
SWPPP	Storm Water Pollution Prevention Plan
TMDL	Total Maximum Daily Load
USACE	United States Army Corps of Engineers
LEED	Leadership in Energy & Environmental Design

Best Management Practices (BMPs): “Schedules of activities, prohibitions of practices, maintenance procedures, and other management practices to prevent or reduce the pollution of waters of the state.” 10 CSR 20-6.200(1)(D)1 Includes structural items or non-structural practices or activities including schedules of activities, prohibitions of practices, maintenance procedures, structural controls, local ordinances, and other management practices to prevent or reduce the discharge of pollutants. BMPs also include treatment requirements, operating procedures, and practices to control runoff, spillage or leaks, waste disposal, or drainage from raw material storage areas. BMPs can be temporary or permanent. BMPs encompass both the enforceable terms and conditions of this permit as well as activities and practices selected by the permittee that will be undertaken to meet the permit requirements but that are not themselves enforceable.

Clear, specific, and measurable terms: “Such terms and conditions may include narrative, numeric, or other types of requirements (*e.g.*, implementation of specific tasks or best management practices (BMPs), BMP design requirements, performance requirements, adaptive management requirements, schedules for implementation and maintenance, and frequency of actions).” 40 CFR 122.34(a) Plain language to establish what is required by the MS4 permittee to achieve permit compliance.

Stormwater: “Storm water runoff, snowmelt runoff and surface runoff, and drainage.” 10 CSR 20-6.200(1)(D)31.

Illicit Discharge: “Any discharge to a municipal separate storm sewer that is not composed entirely of storm water, except discharges pursuant to a state operating permit, other than storm water discharge permits and discharges from firefighting activities.” 10 CSR 20-6.200(1)(D)7.

MS4: “A municipal separate storm sewer system” 10 CSR 20-6.200(1)(D)11.

“Municipal separate storm sewer means a conveyance or system of conveyances including roads and highways with drainage systems, municipal streets, catch basins, curbs, gutters, ditches, paved or unpaved channels, or storm drains designated and utilized for routing of storm water which—

- A. Does not include any waters of the state as defined in section 644.016, RSMo.
- B. Is owned and operated by the state, city, town, village, county, district, association, or other public body created by or pursuant to the laws of Missouri having jurisdiction over disposal of sewage, industrial waste, storm water, or other liquid wastes.
- C. Is not a part or portion of a combined sewer system;
- D. Is not a part of a publicly owned treatment works.” 10 CSR 20-6.200(1)(D)16.

Maximum Extent Practicable (MEP): An adaptive management approach whereby the permittee will implement management measures, including structural and non-structural BMPs. MEP is a permittee-specific determination guided by the following factors: community financial capability and the need for reasonable rate/funding increases, weighing program-wide requirements against site-specific MS4 improvements, MS4 impacts to receiving waters, local priorities, watershed and/or integrated planning, MS4 size, climate, implementation schedules, hydrology, topography, geology, and MS4 capacity to perform operation and maintenance.

Non-Structural Control: Pollution prevention practices that focus on management by limiting or eliminating pollutants before they end up in the stormwater. Non-structural controls may include but are not limited to; site and land use planning, vegetated filters, stream buffers, low impact development (LID), open space preservation, impervious cover restrictions.

Owner: “A person who owns and controls the use, operation, and maintenance of a separate storm sewer.” 10 CSR 20-6.200(1)(D)20 A State Department, City, town, village or other public entity is the “person.”

Permittee: Refers to the MS4 Operator, or holder of this general permit.

Structural Control: A pollution prevention practice that requires the construction, or use of a device, to capture or prevent pollution in stormwater runoff. Structural controls may include but are not limited to: extended detention basins, bio-retention, infiltration basins, stormwater wetlands, bio-swales, vegetative lined ditches, subsurface drains, permeable pavement or concrete, sand filter basins, stormwater planters, proprietary BMPs, storage tanks, and hydrodynamic separators.

Outfall: “A point source as defined by 10 CSR 20-2.010 at the point where a municipal separate storm sewer discharges and does not include open conveyances connecting two (2) municipal separate storm sewers, pipes, tunnels, or other conveyances which connect segments of waters of the state and are used to convey waters of the state.” 10 CSR 20-6.200(1)(D)18. An outfall is not where a stream or waters of the state leave the municipal boundary.

Stormwater Management Program: A comprehensive and documented program to manage the quality of discharges from the MS4.

Waters of the State: “All waters within the jurisdiction of this state, including all rivers, streams, lakes and other bodies of surface and subsurface water lying within or forming part of the boundaries of the state which are not entirely confined and located completely upon lands owned, leased or otherwise controlled by a single person or two or more persons jointly or as tenants in common.” 644.016(27) RSMo.

Roles and Responsibilities

Focus Area	City Staff	Contact Info.	Notes
Overall MS4 Plan	Bill Schnell, P.E. City Engineer Storm Water Manager	cityengineer@weldonspring.org	Developing Plan, coordinate staff roles, main City Contact for MS4.
MCM #1 Public Education And Outreach	Mitchell Jordan Community Relations Coordinator & Public Information Officer	mjordan@weldonspring.org	Includes MS4 Information in Newsletters and social media. Plans City Events that include MS4.
MCM #2 Public Participation and Involvement	Mitchell Jordan Community Relations Coordinator & Public Information Officer	mjordan@weldonspring.org	Plans Community Events such as Stream Team Cleanup, Annual Tree Planting, Kid's Fishing Tournament
MCM #3 Illicit Discharge Detection and Elimination	Bill Schnell, P.E. City Engineer & Storm Water Manager	cityengineer@weldonspring.org	Responsible for inspections, responding to calls, maintaining maps and plans.
MCM #4 Construction Site Runoff Control	Bill Schnell, P.E. City Engineer & Storm Water Manager	cityengineer@weldonspring.org	Responsible for overseeing land disturbance permits and assuring compliance.
MCM #5 Post-Construction Runoff Control	Bill Schnell, P.E. City Engineer & Storm Water Manager	cityengineer@weldonspring.org	Inspection of outfalls, detention basins. Responding to concerns.
MCM #6 Pollution Prevention and Good Housekeeping	Chris Harris Parks & Facilities Manager	charris@weldonspring.org	Routine facility inspections, keeping City Park grounds compliant with Plan

Public Education and Outreach (MCM#1)

Distributing educational materials and performing outreach to inform citizens about the impacts polluted stormwater runoff discharges can have on water quality.

The City of Weldon Spring focused our Public Education and Outreach in several different areas. The Storm Water Plan is starting point and a great educational tool in itself



The City of Weldon Spring provides MS4 related information to citizens and businesses. By utilizing the available public and governmental vehicles, such as our City Website, Facebook Page, and Twitter, the city can reach a wide audience by having the following measures:

- The city has a staff position of City Engineer / Storm Water Manager who will be responsible for developing public education and outreach on storm water impacts. The City Administrator will be responsible to delegate or contract out the City Engineer / Storm Water Manager's responsibilities when the position is vacant. The Community Relations Coordinator is responsible for developing newsletters, maintaining the website and any social media postings. The Community Relations Coordinator will provide information on distribution of newsletters and any metrics available for tracking of social media / website hits to determine utilization.
- At City Hall, educational brochures on a variety of MS4 topics will be available to the public. As the central community meeting location in the city, this is the most logical place to disseminate information. Brochures have been developed by the City of Weldon Spring on general MS4 information, pool and spa discharges, construction site erosion control and a variety of other stormwater topics.
- The city has a dedicate storm water page on the municipal website. (www.weldonspring.org). A link to the current MS4 permit, the City's Stormwater management plan and the annual report can be found by navigating from the homepage to Departments/Community Development/Stormwater Management.
- The City newsletter established by Ordinance 97-06 will also contain information from the City Engineer / Storm Water Manager on storm water management, announcements of meeting and event times and places and sources for available information. Seasonal articles will appear in the quarterly newsletter for MS4 educational purposes.
- The City Engineer / Storm Water Manager may set up a booth at City events such as Senior Day, Fishing Derby other events at the city park. The booth will have information on the best storm water management practices readily available for the public, a map of the city showing the water shed drainage reaches and discharge points, public participation literature, and on occasion questionnaires for surveys. The booth will typically be manned by the City Engineer / Storm Water Manager. ***This has been curtailed due to Covid-19 during 2021 to limit exposure.***

BMP - Clear	BMP - Specific	BMP-Measurable
Provide Educational Stormwater Topics to City Residents & Businesses	City Newsletter sent to all addresses in City	During 2021, four (4) seasonal newsletters were sent to all residents and businesses. Approximately 2,200 mailed x 4 seasonal issues = 8,800 annual distribution. Each newsletter contained a focused stormwater topic for the season.
Provide Information to Pool owners on Stormwater Requirements	A City Educational Brochure of specific Stormwater Pool Requirements	Informational pamphlet on proper pool/spa water draining was attached to 100% of new pool permits. During 2021, 16 new pools were permitted.
Small Construction Site Erosion Control	A City Education Brochure on managing erosion at small construction sites.	Informational pamphlet on erosion control was attached to 100% of new permits including minor grading. During 2021, 2 homes, 7 retaining walls, 32 decks, 1 new addition were permitted and provided this information.
Utilize social media to provide stormwater information.	Put stormwater information on the City's Facebook postings.	The City Facebook page had an average reach of 1,386 people with 9 new followers.
Utilize the City website to communicate stormwater information.	Establish a Stormwater page on the City website and place the MS4 permit, SWMP and related information.	During 2021 there were 118 website views to the Community Development portion of the website that contains the Stormwater Information.

Public Participation/Involvement (MCM#2)

Providing opportunities for citizens to participate in program development and implementation, including effectively publicizing public hearings and/or encouraging citizen representatives on a stormwater management panel.



The City of Weldon posted a public notice for a public meeting to occur on 3/4/2021 and the start of a public comment period (1/28/2021 to 3/4/2021) on the city website and in municipal communications.

Information related to the permit process, the City's MS4 Stormwater Management Plan and the annual report were available in person at City Hall and posted on the city website.

One public comment was received which stated they appreciated the public information received from the City on stormwater issues.

Unfortunately, Covid-19 has reduced public attendance at many meetings. With the pandemic (hopefully) coming to an end soon, the city is hopeful of a return to more normal attendance at in person events.

BMP - Clear	BMP - Specific	BMP-Measurable
Provide Opportunity for Residents to Contribute and Participate in Development of City Stormwater Management Plan by encouraging public input.	Provide Public Notice and a minimum 30 - day comment period to allow review and input into the City's MS4 Permit process and SWMP.	The city posted a Public Notice on the website and social media on 1/28/2021. The comment period runs until 3/4/2021. A copy of the Draft permit, the proposed SWMP outline and other information was posted online to review. Copies are available at City Hall on request.
Provide Opportunity for Residents to Contribute and Participate in Development of City Stormwater Management Plan by providing a public forum to contribute.	Hold a Public Hearing with a 30 - day advanced notice to allow public input into the permitting process and SWMP.	A Public Hearing in an open house format is scheduled for 3/4/2021 at the City Hall so the public can attend, review, participate and contribute to the development of our new SWMP and permit renewal.
Provide Opportunity for Residents to Participate and Contribute to Stormwater Program.	Partner with Stream Team and/or other local partners on events and encourage public participation.	The city partnered with Stream Team and St. Charles County in the Veteran's Tribute Park Clean-up on 4/22/2021 in Weldon Spring. The city's social media was used to promote this event and staff from the city attended the cleanup. Approximately 20 volunteers collected 10 bags of trash
Provide opportunities for residents and staff to learn more and participate in environmental events which impact stormwater.	Partner with local volunteers to improve water quality and improve the community.	On 4/24/2021 the city advertised and hosted an Earth Day Park Clean-up and Movie Night. A local boy scout troop and parents (20) cleaned up the park and removed invasive bush honeysuckle on approximately 1 acre to improve water quality.

Illicit Discharge Detection and Elimination (MCM#3)

Developing and implementing a plan to detect and eliminate illicit discharges to the storm sewer system (includes developing a system map and informing the community about hazards associated with illegal discharges and improper disposal of waste).



The City of Weldon Spring has ordinances in the City Municipal Code that prohibit illicit discharges that would enter the waters of the State.

The City Engineer /Storm Water Manager is responsible for the city's illicit discharge detection inspections. The City Code Enforcer also assist with inspections of outfalls and water quality features (detention / retention basins, etc.) Both jobs are part time positions in the city.

The city has a stormwater map developed by a consulting engineering company detailing all known storm water outfall locations in the City of Weldon Spring and the corresponding streams that lead to waters of the State. Each outfall from the city's border is labeled with a letter (A-J). Any outfall ultimately draining to this location is numbered with the corresponding letter to track discharges more easily. This map is continually updated with further developments within the city. The City Engineer has also developed a GIS based inventory of the stormwater system outfalls on Google Earth. This is a great tool to help locate and track outfalls in the city. A copy of the .kmz files can be supplied upon request. This allows anyone with a computer and access to Google Earth Pro to see the location of outfalls within the city. This can also be viewed at the City Engineer's computer in City Hall upon request.

The stormwater outfall map is used during the inspection program coordinated by the City Engineer / Storm Water Manager. Inspection forms developed by the City Engineer also include the map on the form itself. This greatly assist in finding the outfalls when performing inspections. These inspections focus on detecting any illicit discharges into the waters of the State. Conducting inspections during dry seasons is key, since only stormwater should normally be flowing thru the stormwater system. Inspections are typically performed during the winter season, when dormant vegetation allows better access to many of the discharge points. The inspections will be made periodically throughout the permit cycle with the goal to meet or exceed the minimum inspection requirement.

Should any potential illicit discharge be identified or reported to the city, the City Engineer / Storm Water Manager will coordinate tracking and, if needed, sampling and testing of the pollutant to find the source and eliminate the violation. The Code Enforcer may also be utilized depending on the schedule and availability of these part time positions.

The city also responds to community input reporting any non-storm water discharges and illegal dumping viewed or witnessed by the public. The City Engineer / Storm Water Manager will follow up with inspections of areas reported by the public of potential violations.

Should violations of any of these standards occur, the City Engineer and/or Code Enforcer is designated to take action to correct the illicit discharge as specified in The Municipal Code City of Weldon Spring. As an example The Municipal Code, Title VII: Utilities, Chapter 705: Public and Private Sewers, Sections 705.060, 705.070, and 705.080 covers the protection from damage, the powers and authority of inspections, and the penalties that will be assessed should the provisions of the Code be violated. The offending parties must cease all infractions in a certain time period. If the actions do not cease, any person may be assessed a fine and become liable for any expense, loss, or damage that occurs because of the violation

Inspections are logged into a 3-ring binder Stormwater Documentation Log maintained at the City Engineer's desk. An annual summary of the inspections is put together in an excel spreadsheet.

During 2021, the city did receive two reports of potential illicit discharges.

One 8/5/2021 a resident reported dead fish in a tributary to Baltic Creek along Pitman Hill. The city notified St. Charles County since the allegations involved the St. Charles County Veteran's Tribute Park and MoDNR Spill hotline was notified. Upon investigation by all three parties, the fish apparently died in stagnant back water of a creek during a drought period. There was no indication or evidence of an illicit discharge. The fish died from low oxygen levels, typical when a creek subsides, and numerous fish remain in a puddle.

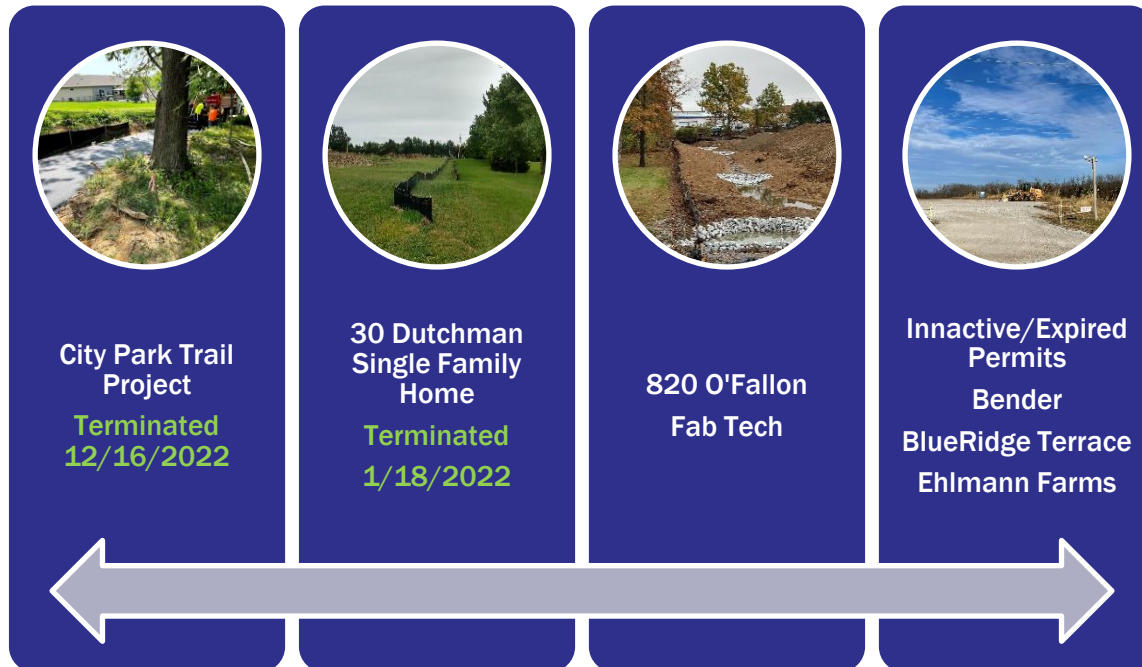
One 9/2/2021 a customer reported a fuel spill at the QT store at Route 94 and O'Fallon Road. Both the QT employees and a grading contractor at the store, utilized absorbent bags to soak up the spilled fuel. The leak was contained under the vehicle, and none came close to reaching the storm sewer system. The vehicle had a faulty gas tank which caused the overtopping of the tank.

There were no illicit discharges detected during dry weather screenings.

BMP - Clear	BMP - Specific	BMP-Measurable
Have a map that can be utilized to determine discharge locations and the City's stormwater system.	In 2021, the city continued to improve a map of City stormwater discharge locations by developing an Excel spreadsheet with more detail.	A hard copy of the city stormwater map is located at the City Hall. An electronic version is kept on the city server.
Be able to track any Illicit discharge by knowing how the stormwater system flows in the City.	Have a set of as built plans readily available in City Hall of the storm water systems.	A pdf copy of all subdivision plans is kept on the city server. The City Engineer and other staff can access these plans when needed. A new outfall tracing spreadsheet was developed in 2021 to help track any (future) illicit discharges.
Utilize the public to observe and report any concerns or potential illicit discharges in the City.	Investigate 100% of all public reports/complaints concerning the storm water system.	During 2021, the City responded to two (2) reports of illicit discharge concerns. Both were investigated and resolved. See Activity Log.
The City shall monitor outfall locations to assure no illicit discharges.	Outfalls from the City should have dry weather screenings at a minimum, once per permit cycle.	>70% of the outfalls from the city were inspected during the permit period. Inspection reports are available at City Hall. No illicit discharges were detected at outfalls during this period.
The City shall identify and monitor high priority areas.	High priority locations should be screened at minimum, annually.	During 2021, the city developed a spreadsheet identifying higher priority outfall areas in the city. One outfall had the most concentrated industrial base so will be inspected annually in the current permit cycle.

Construction Site Runoff Control (MCM#4)

Developing, implementing, and enforcing an erosion and sediment control program for construction activities that disturb 1 or more acres of land (controls could include silt fences and temporary stormwater detention ponds).



The City Engineer / Stormwater Manager is responsible for making sure the City Sediment and Erosion Control Regulations are adhered to as per The Municipal Code City of Weldon Spring.

Due to the smaller size and generally more stringent development requirements, there are typically only a handful of active land disturbance sites in the city limits greater than one acre that require a permit from MoDNR.

All disturbed land areas must adhere to the Sediment and Erosion Control Regulations in the Municipal Code of Weldon Spring. All Sediment and Erosion Control plans must be incorporated into the site development plans, or submitted as a separate plan for review by the City Engineer.

The City Engineer / Stormwater Manager reviews all development plans with a checklist to verify compliance with the needs to protect the waters of the State from sediment discharge from the disturbance of land.

The City Engineer / Stormwater Manager typically conducts monthly inspections throughout the duration of development of land to monitor the compliance with the approved plans and ordinances. With a limited number of developments, this is typically performed one day a month and documented. If any deficiencies are discovered, the City Engineer / Stormwater Manager will typically send an email the same day to the permit holder. Compliance has been very good within the city.

Escrows, letters of credit or financial guarantees are held by the City to give the resources to act to protect the waters of the State if violations persist without proper action by the developer.

The City Engineer is authorized by ordinance to address the issues by inspection and follow up violations are found during inspections. To that end if violations are found, the City Engineer shall issue a written order directing that such construction activities and development be stopped immediately, and the violations corrected. If the violations persist the City Engineer shall serve that written order upon any person, firm, corporation or business engaged in such construction activities and development at the site that is the subject of the violation. The performance guarantee proceeds shall be used by the City to complete the planned sediment and erosion control practices if necessary.

During 2021, the City Engineer has been working with the permit holder to terminate their permits with MoDNR on a timely basis once acceptable growth has been established. The city holds escrows or a letter of credit until the MoDNR permit is terminated. There are two older inactive permits (Bender site and Blueridge Terrace), where the City is also working with the owners to determine the future of the property. These permit holders have been in contact with MoDNR St. Louis Office and have been told the permits are not active. (see email documentation) All permits expire on 2/7/2022.

The number of, or more desirably the lack of incidents concerning problem construction site storm water runoff will determine the success of this control minimum or a need for future adaptive change improvements to the program.

BMP - Clear	BMP - Specific	BMP-Measurable
Assure new construction in the city addresses all storm water requirements.	Utilize a checklist during plan review.	The city developed a new checklist for reviewing plan in 2020, it includes reviewing storm water and erosion control features. 100% of plans were reviewed utilizing the new checklist in 2021.
Monitor land disturbance permits \geq one acre for compliance.	Require active land disturbance permits to submit their weekly and post event erosion inspection reports to the city.	During 2021, the city received weekly inspection reports from 3 active land disturbance permits \geq 1 acre. These are reviewed and filed to assure compliance. These records are kept at City Hall.
Monitor Land disturbance permits \geq 1 acre for compliance.	Perform spot inspections of active land disturbance permits to assure compliance and no illicit discharges.	The City Engineer visits active land disturbance permits, takes photos, and reviews the sites for compliance. 100% of the 3 active permit sites were inspected 4X year, or more frequently. Photos and notes are recorded and maintained at the City Hall.

Post-Construction Runoff Control (MCM#5)

Developing, implementing, and enforcing a program to address discharges of post-construction stormwater runoff from new development and redevelopment areas. Applicable controls could include preventative actions such as protecting sensitive areas (e.g., wetlands) or the use of structural BMPs such as grassed swales or porous pavement.



The City of Weldon Spring requires all new development to adhere to The Municipal Code City of Weldon Spring regarding storm water management. In general, improvements are required to comply with the St. Charles County and Metropolitan St. Louis Sewer District construction standards and specifications for design and construction of storm sewer structures, storm pipe, open channel storm water drainage, storm water detention facility design, construction details, and hydraulics to determine storm water design requirements. Detention is generally required if post construction runoff is increased >2cfs, following standards from St. Charles County.

The city utilizes a checklist site plan review process that requires the implementation of post-construction runoff controls. The city encourages developers to utilizing the **Missouri Guide to Green Infrastructure**, which can be found on the MoDNR website. The current City ordinances require landscaping within parking areas and establishment of vegetation on the site to adequately protect the soil from erosion and runoff in the post construction years.

The City Engineer is responsible for the review and approval of site development construction plans. A checklist is utilized when reviewing plans. Financial guarantees are required by developers help assure compliance with permits and ordinances.

The City Comprehensive Plan has language that encourages development to provide proper buffer along open channels, provide landscaped grass strips that promote best management practices to recharge groundwater, reducing impervious areas using of grassed swales to carry storm water, when possible, creation of wet ponds, use of bio-retention basins on land being developed, and creating rain gardens. In the areas along the Missouri River, the Comprehensive Plan encourages creating overlay districts to cluster home sites on the upland areas and to leave streams open. The purpose of these overlay districts is to promote conservation of woodlands, hydraulic habitats, and to preserve aquatic corridors.

The city provides timely information on MS4 topics in the city newsletter, on the city web site, and with pamphlets made available to developers and the public.

The city has each ordinance listed online at <https://ecode360.com/WE3474>. The Code Enforcer makes routine property inspections into assure City ordinances are being followed.

The success of this control measure will be determined by tracking the number of non-compliant properties. During 2021, there were no properties found to be in non-compliance with City ordinances.

BMP - Clear	BMP - Specific	BMP-Measurable
Assure Stormwater BMPs function properly after construction,	Inspect basins and BMPs once every permit cycle. Get corrective action on any BMP that needs maintenance.	>80% of basins in City have been inspected during the current permit cycle. Corrective work was required in Williamsburg on the Green and Westwood Industrial. All corrections were performed by owners.
Utilize the public as eyes and ears of the community to report any suspected violations, illicit discharges or maintenance needed on the City Storm Water system.	Investigate and act on any public inquiries, complaints, reports involving storm water.	100% of all public inquiries were investigated and responded to. Corrective action was takes on any items requiring maintenance, by the city or private owners. The city maintains a documentation log of all inquiries/investigations at City Hall.
Have a mechanism to maintain water quality BMPs to assure long term compliance.	The city will have ordinances in place to address maintenance of post construction runoff.	The city has ordinances in place to require owners to maintain BMPs. City staff and Code Enforcer are empowered to get compliance on any deficiency. The public has been 100% responsive to City requests to comply with ordinances.

Pollution Prevention/Good Housekeeping (MCM#6)

Developing and implementing a program with the goal of preventing or reducing pollutant runoff from municipal operations. The program must include municipal staff training on pollution prevention measures and techniques (e.g., regular street sweeping, reduction in the use of pesticides or street salt, or frequent catch-basin cleaning).



The City of Weldon Spring has one municipal facility. Our park areas including the 18 acres of park ground that surrounds City Hall. The municipal complex has one older residence that functions as the City Hall, one metal building for Parks staff and equipment, two baseball fields, and one small < 1 acre pond. There is a system of asphalt trails in the park that was expanded in 2021.

Due to the small size of municipal operations, the city has only one full time park employee and one part-time park employee. The park staff concentrates on lawn and general property maintenance at the City Hall complex.

The current City Staff (8 members) attended a general MS4 Training on November 16, 2021. In addition to the required park staff, much of the administrative city staff also attended to learn about MS4 topics.

The city only has one pickup truck, two mowers, one ATV and two electric golf carts. There is no fueling stations or bulk storage at the city. The city vehicle(s) are fueled and washed at commercial locations.

The city does have a basic SWPPP for the municipal complex and the City Parks Manager does monthly inspections of the facilities.

The City Park has one small pond, protected from sediment by a fore bay.

The city has pet waste bags strategically place around the park and along trails in the city to keep contaminants out of the storm water system and park pond. During 2021, the city park staff placed 2,500 bags in these dispensers, with an average of over 200 pet waste bags per month were utilized by park and trail users to reduce pet waste into the stormwater system.

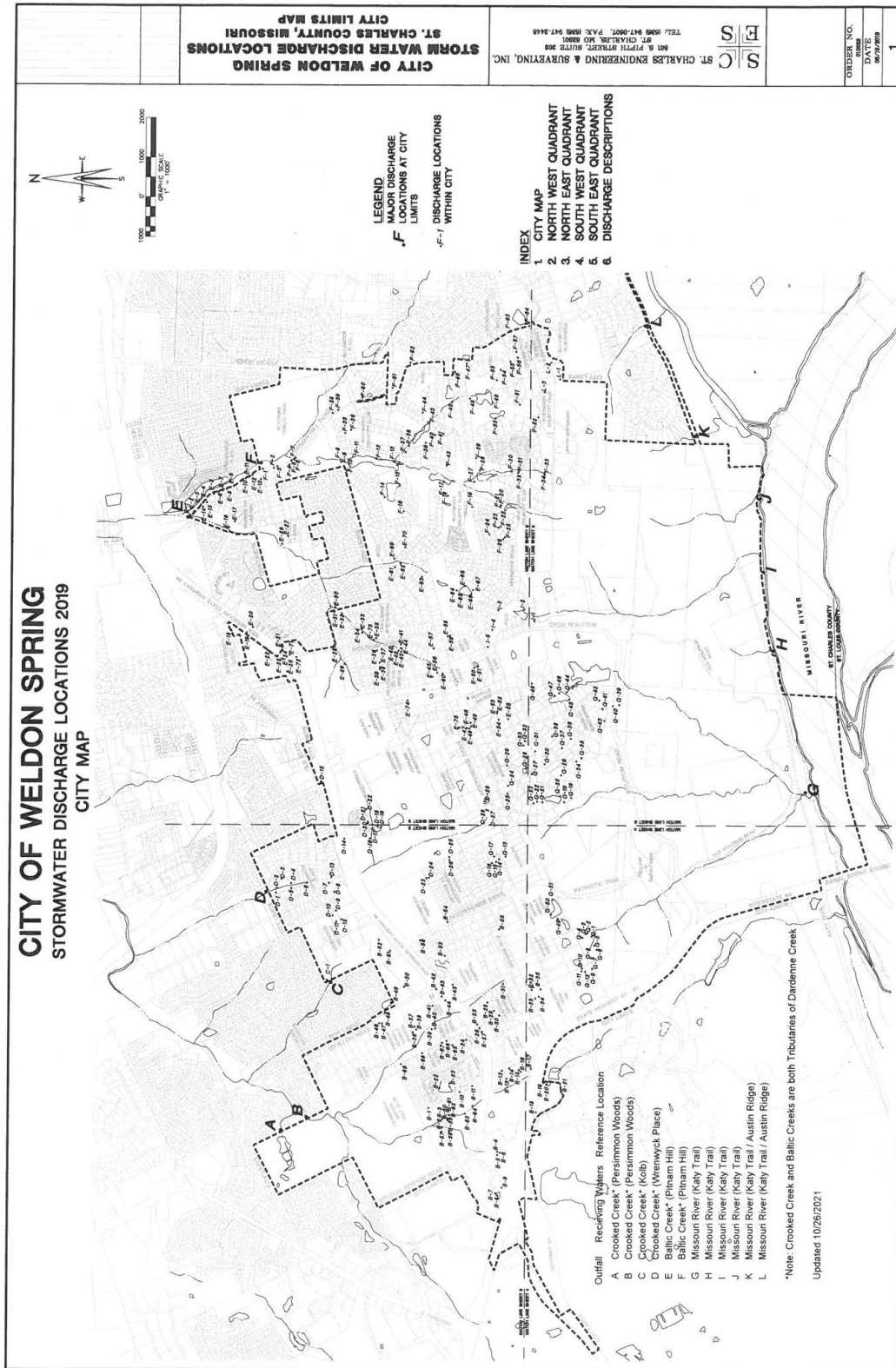
A rain garden has been placed adjacent to the Parks structure and is maintained by City Staff.

During 2021, a local boy scout troop (BSA) volunteered to clean up the 18-acre City Park and removed an invasive species, bush honeysuckle, on a ½ acre site within the park to help improve the environment and water quality.

The city relies on St. Charles County for all other City related pavement and storm sewer maintenance.

BMP - Clear	BMP - Specific	BMP-Measurable
Train City Staff on Stormwater MS4 Topics	Developed a PowerPoint Presentation and Training on 6 Minimum Control Measures and MS4 Plan.	During 2021, the city held MS4 training on 11/16/2021 in person for 100% of field staff.
Review City Owned Facilities to assure adherence to Stormwater Management Best Practices	Developed a Checklist Specific to the City Hall and Park Grounds.	A new report was developed in 2020. This report is now being utilized bi-monthly by the Parks department.
Reduce pet waste from entering stormwater system	The city has provided Pet Waste Disposal bags within the City Park and at several locations in the City along shared use paths.	200 bags+/- were restocked into 4 sites (1 @ City Park, 3 along City Shared use paths) every 2 weeks. A total of 2,500 bags were used in 2021.
Remove excess solids on City Owned Curbed Streets	Schedule Street Sweeping with St. Charles County Highway when needed.	The city had curbed roads swept by St. Charles County Highway by work order when solid debris are noticeable.

Stormwater Discharge Locations



2021 Annual MS4 Report - February 2022

Main Outfall	Outfall No.	Discharges to	Subdivision / Location	City Owned or Dedicated Outfall?	Owner / Maintenance Responsibility	Notes
A		Tributary to Crooked Creek	Persimmon Woods		Persimmon Woods	
B		Tributary to Crooked Creek	Persimmon Woods		Persimmon Woods	
B	1	Tributary to Crooked Creek	Chapter One	1		EP 17 from Hemingway Lane
B	2	Tributary to Crooked Creek	Technology - Siedentop	1		1-1 and 1-2 Outfalls at headwall / cross road pipe
B	3	Tributary to Crooked Creek	Technology - Siedentop	1		4-1 Outfall at headwall / cross road pipe
B	4	Tributary to Crooked Creek	State of Missouri - MSHP C		State of Missouri	FE4
B	5	Tributary to Crooked Creek	State of Missouri - MSHP C		State of Missouri	FE1
B	6	Tributary to Crooked Creek	State of Missouri - MSHP C		State of Missouri	FE14
B	7	Tributary to Crooked Creek	Plaza Motors		ASBURY ST LOUIS M LLC	FES20
B	8	Tributary to Crooked Creek	Plaza Motors		ASBURY ST LOUIS M LLC	FES11
B	9	Tributary to Crooked Creek	Plaza Motors		ASBURY ST LOUIS M LLC	FES8
B	10	Tributary to Crooked Creek	Chapter One	1	City of Weldon Spring	FES12
B	11	Tributary to Crooked Creek	Chapter One	1	City of Weldon Spring	FES14
B	12	Tributary to Crooked Creek	Lot 5 Weldon Spring Center		WELDON CENTRE LLC	FE100
B	13	Tributary to Crooked Creek	Missouri Business Park		Missouri Business Park	FE22
B	14	Tributary to Crooked Creek	Missouri Business Park		Missouri Business Park	FE24
B	15	Tributary to Crooked Creek	Missouri Business Park		Missouri Business Park	FE5
B	16	Tributary to Crooked Creek	Missouri Business Park		Missouri Business Park	FE1
B	17	Tributary to Crooked Creek	Missouri Business Park		Missouri Business Park	FE20
B	18	Tributary to Crooked Creek	NOVUS		REALTY INCOME PROPERTIES 7 LLC	FE13
B	19	Tributary to Crooked Creek	NOVUS		REALTY INCOME PROPERTIES 7 LLC	FE1
B	20	Tributary to Crooked Creek	NOVUS		REALTY INCOME PROPERTIES 7 LLC	FE3
B	21	Tributary to Crooked Creek	NOVUS		REALTY INCOME PROPERTIES 7 LLC	FE11
B	22	Tributary to Crooked Creek	Chapter One	1	City of Weldon Spring	EP23 Outfall into lake - pipe replaced in 2020
B	23	Tributary to Crooked Creek	Chapter One		Chapter One HOA	EP1
B	24	Tributary to Crooked Creek	Midland Bank		Midland Bank	FE1
B	25	Tributary to Crooked Creek	SPIRIT ENERGY LLC		State of Missouri	FE100 on MoDOT R/W
B	26	Tributary to Crooked Creek	SPIRIT ENERGY LLC		State of Missouri	FE1 on MoDOT R/W
B	27	Tributary to Crooked Creek	SPIRIT ENERGY LLC		State of Missouri	FE Un-named on MoDOT R/W
B	28	Tributary to Crooked Creek	Hunters Green Estates	1	City of Weldon Spring	Outfall to Creek from Mergenthal Ct FE 100
B	29	Tributary to Crooked Creek	Hunters Green Estates		Hunters Green HOA	Outfall to Creek from Detention Basin FE 103
B	30	Tributary to Crooked Creek	Hunters Green Estates		Hunters Green HOA	Discharge into Detention Basin FE 105
B	31	Tributary to Crooked Creek	Hunters Green Estates		Hunters Green HOA	Discharge Outfall from Area Inlets to creek FE 113
B	32	Tributary to Crooked Creek	WORLDCOM TECHNOLOGIES		Worldcom Technologies, Inc.	Outfall to Property Line from Detention FE 40
B	33	Tributary to Crooked Creek	WORLDCOM TECHNOLOGIES		Worldcom Technologies, Inc.	Parking lot discharge into Detention EP 01
B	34	Tributary to Crooked Creek	WORLDCOM TECHNOLOGIES		Worldcom Technologies, Inc.	Parking lot discharge into Detention EP 13
B	35	Tributary to Crooked Creek	WORLDCOM TECHNOLOGIES		Worldcom Technologies, Inc.	Parking lot discharge into Detention EP 15
B	36	Tributary to Crooked Creek	Francis Howell School District		FRANCIS HOWELL R III SCHOOL DISTRICT	FE - Unnamed from pond
B	37	Tributary to Crooked Creek	Messiah Lutheran		Messiah Lutheran	FES 102
B	38	Tributary to Crooked Creek	Messiah Lutheran		Messiah Lutheran	FES 100
B	39	Tributary to Crooked Creek	Huber Commercial		Huber Park HOA	FE 6
B	40	Tributary to Crooked Creek	Huber Commercial		Huber Park HOA	FE 1
B	41	Tributary to Crooked Creek	Messiah Lutheran		Messiah Lutheran	FES 107
B	42	Tributary to Crooked Creek	QT #0645		QT #0645	FE - Unnamed
B	43	Tributary to Crooked Creek	QT #0645		QT #0645	FES 3-1
B	44	Tributary to Crooked Creek	Messiah Lutheran		Messiah Lutheran	EP - Unnamed
B	45	Tributary to Crooked Creek	BLANCHETTE REAL ESTATE LLC		BLANCHETTE REAL ESTATE LLC	EP - Unnamed CenterPoint Hospital
B	46	Tributary to Crooked Creek	Francis Howell School District		Francis Howell School District	EP 1 Discharge in Creek from Detention
B	47	Tributary to Crooked Creek	Francis Howell School District		Francis Howell School District	FES 4

2021 Annual MS4 Report - February 2022

B	48	Tributary to Crooked Creek	Francis Howell School District		Francis Howell School District	FES 11
B	49	Tributary to Crooked Creek	RODERICK REAL ESTATE LLC		RODERICK REAL ESTATE LLC	EP - Unnamed
B	50	Tributary to Crooked Creek	Westwood Center		Westwood Center	FE 100
B	51	Tributary to Crooked Creek	Kolb Family Trust		Kolb Family Trust	FE 1
B	52	Tributary to Crooked Creek	Kolb Family Trust		Kolb Family Trust	FE 3
B	53	Tributary to Crooked Creek	Southbrook Forest	1	City of Weldon Spring	FE 1
B	54	Tributary to Crooked Creek	Westchester Farm Addition		Westchester Farm Addition	FES 1 Drainage in backyards
B	55	Tributary to Crooked Creek	Grenada Hills (misabeled Westchester Farm)		Granada Hills HOA	Note - GRANADA HILLS (NOT Westester)
B	56	Tributary to Crooked Creek	Westchester Farm Phase Three		Westchester Farm Phase Three	EP - Unnamed
B	57	Tributary to Crooked Creek	TRACE APARTMENTS LLC		TRACE APARTMENTS LLC	FES 50
B	58	Tributary to Crooked Creek	TRACE APARTMENTS LLC		TRACE APARTMENTS LLC	FES 1
B	59	Tributary to Crooked Creek	TRACE APARTMENTS LLC		TRACE APARTMENTS LLC	FES 37
B	60	Tributary to Crooked Creek	TRACE APARTMENTS LLC		TRACE APARTMENTS LLC	FES 39
B	61	Tributary to Crooked Creek	TRACE APARTMENTS LLC		TRACE APARTMENTS LLC	FES 48
B	62	Tributary to Crooked Creek	TRACE APARTMENTS LLC		TRACE APARTMENTS LLC	FES 41
B	63	Tributary to Crooked Creek	TRACE APARTMENTS LLC		TRACE APARTMENTS LLC	Box Culvert 33
B	64	Tributary to Crooked Creek	TRACE APARTMENTS LLC		TRACE APARTMENTS LLC	FES 24
B	65	Tributary to Crooked Creek	Cedar Glen	1	Cedar Glen	FE 20 Cedar Glen Court
B	66	Tributary to Crooked Creek	Cedar Glen	1	Cedar Glen	FE 15 Cedar Crest Court
B	67	Tributary to Crooked Creek	Cedar Glen	1	Cedar Glen	FE 26 Cedar Glen Court (wrong location on map)
B	68	Tributary to Crooked Creek	Cedar Glen	1	Cedar Glen	FE 10 Cedar Knoll
B	69	Tributary to Crooked Creek	Cedar Glen	1	Cedar Glen	FE 1 Cedar Ridge Court
C	1	Tributary to Crooked Creek	Kolb		2008 KOLB FAMILY TRUST THE	FE 5
D		Tributary to Crooked Creek	Wrenwyck		Wrenwyck HOA	
D	1	Tributary to Crooked Creek	Wrenwyck		Wrenwyck HOA	FE 201 Outfall from Detention /Henssely Cir Ct.
D	2	Tributary to Crooked Creek	Wrenwyck		Wrenwyck HOA	FE 212 Detention MH / Hensley Cir
D	3	Tributary to Crooked Creek	Wrenwyck		Wrenwyck HOA	FE 220 Outfall into Detention Basin / Hensley Cir
D	4	Tributary to Crooked Creek	Wrenwyck		Wrenwyck HOA	FE 248 Outfall into Detention Basin / Dunbarton
D	5	Tributary to Crooked Creek	Wrenwyck		Wrenwyck HOA	FE 239 Outfall into Creek from Wrenwyck Place
D	6	Tributary to Crooked Creek	Wrenwyck		Wrenwyck HOA	Cross Road Box Culvert / Wrenwyck Place
D	7	Tributary to Crooked Creek	Wrenwyck	1	Wrenwyck HOA	FE 276 / Charing Cross Court
D	8	Tributary to Crooked Creek	Wrenwyck	1	Wrenwyck HOA	FE 300 / Halifax Bend
D	9	Tributary to Crooked Creek	Westwood Industrial		Westwood Industrial Park	Outfall from Westwood Industrial Detention/ FE 1
D	10	Tributary to Crooked Creek	Westwood Industrial		Westwood Industrial Park	Westwood Industrial Outfall Structure OS2
D	11	Tributary to Crooked Creek	Westwood Industrial		Westwood Industrial Park	FE 22 into Westwood Detention Basin
D	12	Tributary to Crooked Creek	Westwood Industrial		Westwood Industrial Park	FE 3 into Westwood Detention Basin
D	13	Tributary to Crooked Creek	Wrenwyck	1	City of Weldon Spring	FE 291 Outfall from Dunbarton to creek
D	14	Tributary to Crooked Creek	94 - Breeze Park		MoDOT	Westerfield FE 223
D	15	Tributary to Crooked Creek	94		MoDOT	South 94 Storage FE Unnamed from site detention
D	16	Tributary to Crooked Creek	Westerfield / Breeze Park		Lutheran Senior Services	Westerfield Phase 1 FE 216
D	17	Tributary to Crooked Creek	Gables at Breeze Park		Lutheran Senior Services	FE - Unnamed
D	18	Tributary to Crooked Creek	Gables at Breeze Park		Lutheran Senior Services	FE 39 Discharge into wet retention pond
D	19	Tributary to Crooked Creek	Gables at Breeze Park		Lutheran Senior Services	FE 42 Discharge into wet retention pond
D	20	Tributary to Crooked Creek	Breeze Park		Lutheran Senior Services	EP 201 Outfall into creek from Westerfield Drive
D	21	Tributary to Crooked Creek	Breeze Park		Lutheran Senior Services	FE 220 Cross road pipe under Westerfield Drive
D	22	Tributary to Crooked Creek	Breeze Park		Lutheran Senior Services	FE 212
D	23	Tributary to Crooked Creek	Westchester		ESTATES AT WESTCHESTER FARM HOMEOWNERS ASSOC	FE 36 Discharge from Detention Basin to Creek
D	24	Tributary to Crooked Creek	Westchester		ESTATES AT WESTCHESTER FARM HOMEOWNERS ASSOC	FE 38 Discharge Westchester M. bubble to detention
D	25	Tributary to Crooked Creek	Westchester		ESTATES AT WESTCHESTER FARM HOMEOWNERS ASSOC	FE 1 Outfall from detention to creek
D	26	Tributary to Crooked Creek	Westchester		ESTATES AT WESTCHESTER FARM HOMEOWNERS ASSOC	FE 3 Discharge from Westchester M. Drive to detention

2021 Annual MS4 Report - February 2022

D	27	Tributary to Crooked Creek	Independence		ST JOHN SCOTT E*ST JOHN JAMIE R	Discharge Outfall from Independence
D	28	Tributary to Crooked Creek	Independence		PETERSON WILLIAM N*PETERSON KARI S	Discharge Outfall from Detention
D	29	Tributary to Crooked Creek	Independence		SHELLERT DAVID J*SHELLERT CYNTHIA D	Independence Rd Outfall into Private Detention Pond
E	1	Tributary to Dardenne Cr.	Pitman Hill (County Portion)		St. Charles County Highway	FE12 Pitman Hill SCCO
E	2	Tributary to Dardenne Cr.	Pitman Hill (County Portion)		St. Charles County Highway	FE 15 Pitman SCCO
E	3	Tributary to Dardenne Cr.	Pitman Hill (County Portion)		St. Charles County Highway	FE 21 Pitman SCCO
E	4	Tributary to Dardenne Cr.	Pitman Hill (County Portion)		St. Charles County Highway	FE 29 Pitman SCCO
E	5	Tributary to Dardenne Cr.	Pitman Hill (County Portion)		St. Charles County Highway	FE 31 Pitman SCCO
E	6	Tributary to Dardenne Cr.	Pitman Hill (County Portion)		St. Charles County Highway	FE 33 Pitman SCCO
E	7	Tributary to Dardenne Cr.	Pitman Hill (County Portion)		St. Charles County Highway	FE 35 Pitman SCCO
E	8	Tributary to Dardenne Cr.	Pitman Hill (County Portion)		St. Charles County Highway	FE 37 Pitman SCCO
E	9	Tributary to Dardenne Cr.	Pitman Hill (County Portion)		St. Charles County Highway	FE 39 Pitman SCCO
E	10	Tributary to Dardenne Cr.	Pitman Hill (County Portion)		St. Charles County Highway	FE 44 Pitman SCCO
E	11	Tributary to Dardenne Cr.	Pitman Hill (County Portion)		St. Charles County Highway	FE 46 Pitman SCCO
E	12	Tributary to Dardenne Cr.	Pitman Hill (County Portion)		St. Charles County Highway	FE 50 Pitman SCCO
E	13	Tributary to Dardenne Cr.	Sammelmann/Renaissance	1	City of Weldon Spring	FE 12 Discharge from Renaissance Pl to swale
E	14	Tributary to Dardenne Cr.	Renaissance		Renaissance HOA	Outfall from private detention to drainage swale FE 17
E	15	Tributary to Dardenne Cr.	Renaissance		Renaissance HOA	Outfall from Renaissance Pl to private detention FE 1
E	16	Tributary to Dardenne Cr.	Lucerne / Renaissance		MANORS OF LUCERNE TRUSTEES	Outfall from Lucerne Pl detention to Creek FE 1
E	17	Tributary to Dardenne Cr.	Lucerne / Renaissance		MANORS OF LUCERNE TRUSTEES	Outfall from Lucerne Pl inlets to Detention FE 3
E	18	Tributary to Dardenne Cr.	Wolfrum Crossing / 94		Wolfrum Crossing / 94	FE 23
E	19	Tributary to Dardenne Cr.	Wolfrum Crossing / 94		MoDOT	FE 14 from Triad Crossing (Wolfrum)
E	20	Tributary to Dardenne Cr.	Wolfrum Crossing / 94		Wolfrum Crossing / 94	EP Unnamed
E	21	Tributary to Dardenne Cr.	Wolfrum Crossing / 94		MoDOT	Outfall from Wolfrum Crossing / Triad to creek
E	22	Tributary to Dardenne Cr.	Wolfrum Crossing / 94		MoDOT	EP 10 from Triad
E	23	Tributary to Dardenne Cr.	Wolfrum Crossing / 94		Triad to MoDOT 94	FES 1 Oil Change Private
E	24	Tributary to Dardenne Cr.	Wolfrum Crossing / 94		Wolfrum Crossing / 94 / MoDOT	FE 51 Drains to MoDOT MH then crossroad to E21
E	25	Tributary to Dardenne Cr.	Wolfrum Crossing / 94		Wolfrum Crossing / 94	FE 11 Discharge from inlets behind buildings
E	26	Tributary to Dardenne Cr.	Ehlmann Farms		EHLMANN FARMS HOMEOWNERS ASSOCIATION	FE 01 Outfall from detention to creek
E	27	Tributary to Dardenne Cr.	Ehlmann Farms		EHLMANN FARMS HOMEOWNERS ASSOCIATION	FE 03 Discharge Ehlman F. and area inlets to detention
E	28	Tributary to Dardenne Cr.	Shetland Court		Highlands HOA / City?	FE 320 from Shetland Court
E	29	Tributary to Dardenne Cr.	Williamsburg on the Green		WILLIAMSBURG ON THE GREEN OWNERS ASSOCIATION	Discharge from Roanoke Inlet into creek EP 28
E	30	Tributary to Dardenne Cr.	Highlands		City of St. Peters	Discharge from Detention into Creek FE300
E	31	Tributary to Dardenne Cr.	Highlands	1	City of Weldon Spring	Discharge from Shetland into Creek FE312
E	32	Tributary to Dardenne Cr.	Highlands	1	City of Weldon Spring	Discharge from Blairbeth into Creek FE 322
E	33	Tributary to Dardenne Cr.	Highlands	1	City of Weldon Spring	Discharge from Balmore Ct to Creek FE 314
E	34	Tributary to Dardenne Cr.	Highlands	1	City of Weldon Spring	Discharge from Bothwell to Creek FE 317
E	35	Tributary to Dardenne Cr.	Highlands	1	City of Weldon Spring	FE-1 Discharge along Wolfrum near creek
E	36	Tributary to Dardenne Cr.	Williamsburg on the Green		WILLIAMSBURG ON THE GREEN OWNERS ASSOCIATION	EP 24 Outfall to creek from New Haven Ct. inlets
E	37	Tributary to Dardenne Cr.	Williamsburg on the Green		WILLIAMSBURG ON THE GREEN OWNERS ASSOCIATION	EP 37 Outfall to creek from Hartford inlets
E	38	Tributary to Dardenne Cr.	Williamsburg on the Green		WILLIAMSBURG ON THE GREEN OWNERS ASSOCIATION	EP16 Outfall from detention into creek
E	39	Tributary to Dardenne Cr.	Williamsburg on the Green		WILLIAMSBURG ON THE GREEN OWNERS ASSOCIATION	EP 18 Discharge into detention from Ronoake Drive
E	40	Tributary to Dardenne Cr.	Williamsburg on the Green		WILLIAMSBURG ON THE GREEN OWNERS ASSOCIATION	EP 46 Outfall from detention into creek
E	41	Tributary to Dardenne Cr.	Williamsburg on the Green		WILLIAMSBURG ON THE GREEN OWNERS ASSOCIATION	EP 40 Discharge from Greenburg Ct. into detention
E	42	Tributary to Dardenne Cr.	Williamsburg on the Green		WILLIAMSBURG ON THE GREEN OWNERS ASSOCIATION	EP 11 Discharge into detention from Clarksburg Ct.
E	43	Tributary to Dardenne Cr.	Williamsburg on the Green		WILLIAMSBURG ON THE GREEN OWNERS ASSOCIATION	EP 8 Discharge into detention from Waynesboro Ct.
E	44	Tributary to Dardenne Cr.	Williamsburg on the Green		WILLIAMSBURG ON THE GREEN OWNERS ASSOCIATION	EP 49 Outfall from detention into creek
E	45	Tributary to Dardenne Cr.	Williamsburg on the Green		WILLIAMSBURG ON THE GREEN OWNERS ASSOCIATION	EP 1 Outfall from Roanoke Drive to creek
E	46	Tributary to Dardenne Cr.	Rodelle / Camelot		Camelot HOA	EP Unnamed
E	47	Tributary to Dardenne Cr.	Rodelle / Camelot		Camelot HOA	FE 3 Discharge into Detention Basin A

2021 Annual MS4 Report - February 2022

E	48	Tributary to Dardenne Cr.	Rodelle / Camelot		Camelot HOA	FE 9
E	49	Tributary to Dardenne Cr.	Rodelle / Camelot		Camelot HOA	FE 11 Outfall from Detention Basin A to Creek
E	50	Tributary to Dardenne Cr.	Willow Lake		Willow Lake HOA	Outfall from Retention FE 1 into Creek
E	51	Tributary to Dardenne Cr.	Willow Lake		Willow Lake HOA	FE3 from Willow Lakes Inlets into Retention Pond
E	52	Tributary to Dardenne Cr.	Camelot		Camelot HOA	Outfall from Detention FE 27
E	53	Tributary to Dardenne Cr.	Camelot		Camelot HOA	Overflow Structure in Detention Pond FE 23A
E	54	Tributary to Dardenne Cr.	Camelot		Camelot HOA	Discharge into Detention FE 23
E	55	Tributary to Dardenne Cr.	Camelot		Camelot HOA	Discharge into Detention FE 30
E	56	Tributary to Dardenne Cr.	Tudor Trace		Tudor Trace HOA	FES outfall along Independence FE 1
E	57	Tributary to Dardenne Cr.	Tudor Trace		Tudor Trace HOA	FES drainage from corner property FE 7
E	58	Tributary to Dardenne Cr.	Grey Oaks / Wolfrum		Grey Oaks HOA	FES outfall from Detention FES 2
E	59	Tributary to Dardenne Cr.	Grey Oaks / Wolfrum		Grey Oaks HOA	Overflow Structure in Detention Pond FES 5
E	60	Void	Void			Mis-labeled
E	61	Tributary to Dardenne Cr.	Highlands/Rosemount	1	City of Weldon Spring	Outfall to Creek FE47
E	62	Tributary to Dardenne Cr.	Newgrange Pass/Whitmoor		WHITTAKER GOLF INC	Outfall to Creek EP 3-4
E	63	Tributary to Dardenne Cr.	Highlands/Rosemount	1	City of Weldon Spring	Outfall to Creek FE-35
E	64	Tributary to Dardenne Cr.	Whitmoor		WHITTAKER GOLF INC	EP - Unnamed - Outfall from overflow structure pond
E	65	Tributary to Dardenne Cr.	Whitmoor		WHITTAKER GOLF INC	EP 35 outfall into pond from W Meath Ring
E	66	Tributary to Dardenne Cr.	Whitmoor		WHITTAKER GOLF INC	Outfall from Portmarnock Ln to common ground EP1
E	67	Tributary to Dardenne Cr.	Whitmoor		WHITTAKER GOLF INC	EP 8
E	68	Tributary to Dardenne Cr.	Whitmoor		WHITTAKER GOLF INC	EP 26
E	69	Tributary to Dardenne Cr.	Whitmoor		WHITTAKER GOLF INC	EP 3-18
E	70	Tributary to Dardenne Cr.	Whitmoor		WHITTAKER GOLF INC	EP 3-6
E	71	Tributary to Dardenne Cr.	Wolfrum / 94		Wolfrum / 94	
E	72	Tributary to Dardenne Cr.	Wolfrum / 94		Wolfrum / 94	
E	73	Tributary to Dardenne Cr.	Wolfrum / Highlands		Wolfrum / Highlands	
E	74	Tributary to Dardenne Cr.	Blueridge Terrace		Developer	Outfall from Enclave Ter Ct to backyard
E	75	Tributary to Dardenne Cr.	City Hall / Independence	1	City Hall / Independence	Outfall from Independence Road Drainage to creek
F	1	Tributary to Dardenne Cr.	Pitman Hill Road	1	City of Weldon Spring	EP 51 Outfall to creek from inlets on Pitman
F	2	Tributary to Dardenne Cr.	Pitman Hill Road	1	City of Weldon Spring	EP 56 Outfall to creek from Pitman inlets
F	3	Tributary to Dardenne Cr.	Pitman Hill Road	1	City of Weldon Spring	FE 59A Outfall to creek from Pitman inlets
F	4	Tributary to Dardenne Cr.	Pitman Hill Road		Ameren Substation	EP 1
F	5	Tributary to Dardenne Cr.	Pitman Hill Road		City of Weldon Spring	FE 61
F	6	Tributary to Dardenne Cr.	Pitman Hill Road		City of Weldon Spring	BOX CULVERT
F	7	Tributary to Dardenne Cr.	Pitman Hill Road		City of Weldon Spring	FE 62
F	8	Tributary to Dardenne Cr.	Whitmoor		WHITTAKER GOLF INC	EP 2-1
F	9	Tributary to Dardenne Cr.	Whitmoor		WHITTAKER GOLF INC	BOX CULVERT 1
F	10	Tributary to Dardenne Cr.	Whitmoor		WHITTAKER GOLF INC	FE 3-38 Whitmoor Phase 3
F	11	Tributary to Dardenne Cr.	Whitmoor		WHITTAKER GOLF INC	EP 2-14 Whitmoor Phase 2
F	12	Tributary to Dardenne Cr.	Whitmoor		WHITTAKER GOLF INC	EP 2-19 Whitmoor Phase 2
F	13	Tributary to Dardenne Cr.	Whitmoor		WHITTAKER GOLF INC	EP 2-34 Whitmoor Phase 2
F	14	Tributary to Dardenne Cr.	Whitmoor		WHITTAKER GOLF INC	FE 3-46 Whitmoor Phase 3
F	15	Tributary to Dardenne Cr.	Whitmoor		WHITTAKER GOLF INC	FE 3-26 Whitmoor Phase 3
F	16	Tributary to Dardenne Cr.	Whitmoor		WHITTAKER GOLF INC	FE 3-35 Whitmoor Phase 3
F	17	Tributary to Dardenne Cr.	Whitmoor		WHITTAKER GOLF INC	FE 3-1 Whitmoor Phase 3
F	18	Tributary to Dardenne Cr.	Whitmoor		WHITTAKER GOLF INC	FE 1 Whitmoor Villas
F	19	Tributary to Dardenne Cr.	Whitmoor		WHITTAKER GOLF INC	FE M8-7 Forest at Whitmoor
F	20	Tributary to Dardenne Cr.	Whitmoor		WHITTAKER GOLF INC	ME 1 Cross Road Culvert
F	21	Tributary to Dardenne Cr.	Whitmoor		WHITTAKER GOLF INC	EP 60 Whitmoor Phase 1 Addition
F	22	Tributary to Dardenne Cr.	Whitmoor		WHITTAKER GOLF INC	FE 71 Whitmoor Phase 1 Addition

2021 Annual MS4 Report - February 2022

F	23	Tributary to Dardenne Cr.	Whitmoor		WHITTAKER GOLF INC	FE M1-7 Forest at Whitmoor
F	24	Tributary to Dardenne Cr.	Whitmoor		WHITTAKER GOLF INC	FE M1-1 Forest at Whitmoor
F	25	Tributary to Dardenne Cr.	Whitmoor		WHITTAKER GOLF INC	FE 72 Whitmoor Phase 1 Addition
F	26	Tributary to Dardenne Cr.	Whitmoor		WHITTAKER GOLF INC	FE M1-5 Forest at Whitmoor
F	27	Tributary to Dardenne Cr.	Whitmoor		WHITTAKER GOLF INC	EP - Unnamed Whitmoor Phase 4
F	28	Tributary to Dardenne Cr.	Whitmoor		WHITTAKER GOLF INC	EP 36 Whitmoor Phase 4
F	29	Tributary to Dardenne Cr.	Whitmoor		WHITTAKER GOLF INC	EP M4
F	30	Tributary to Dardenne Cr.	Whitmoor		WHITTAKER GOLF INC	EP 36 Whitmoor Phase 4
F	31	Tributary to Dardenne Cr.	Whitmoor		WHITTAKER GOLF INC	FE 73 Whitmoor Phase 1 Addition
F	32	Tributary to Dardenne Cr.	Whitmoor		WHITTAKER GOLF INC	ME 3 Cross Road Culvert
F	33	Tributary to Dardenne Cr.	Whitmoor		WHITTAKER GOLF INC	FE 30 Whitmoor Phase 4
F	34	Tributary to Dardenne Cr.	Whitmoor		WHITTAKER GOLF INC	EP 32 Whitmoor Phase 4
F	35	Tributary to Dardenne Cr.	Whitmoor		WHITTAKER GOLF INC	EP 2-1 Whitmoor Phase 2
F	36	Tributary to Dardenne Cr.	Whitmoor		WHITTAKER GOLF INC	EP 2-10 Whitmoor Phase 2
F	37	Tributary to Dardenne Cr.	Whitmoor		WHITTAKER GOLF INC	Whitmoor Cross Road Culvert ME 6
F	38	Tributary to Dardenne Cr.	Whitmoor		WHITTAKER GOLF INC	EP 2-39 Whitmoor Phase 2
F	39	Tributary to Dardenne Cr.	Whitmoor		WHITTAKER GOLF INC	EP 2-41 Whitmoor Phase 2
F	40	Tributary to Dardenne Cr.	Whitmoor		WHITTAKER GOLF INC	EP 2-44 Whitmoor Phase 2
F	41	Tributary to Dardenne Cr.	Whitmoor		WHITTAKER GOLF INC	EP 2-46 Whitmoor Phase 2
F	42	Tributary to Dardenne Cr.	Whitmoor		WHITTAKER GOLF INC	EP 8-1 WCC PLAT 7 Series 800
F	43	Tributary to Dardenne Cr.	Whitmoor		WHITTAKER GOLF INC	EP 2-71 Whitmoor Phase 2
F	44	Tributary to Dardenne Cr.	Whitmoor		WHITTAKER GOLF INC	EP 2-64 Whitmoor Phase 2
F	45	Tributary to Dardenne Cr.	Whitmoor		WHITTAKER GOLF INC	FE 2-74 Whitmoor 2
F	46	Tributary to Dardenne Cr.	Whitmoor		WHITTAKER GOLF INC	EP 61 Whitmoor Phase 4
F	47	Tributary to Dardenne Cr.	Whitmoor		WHITTAKER GOLF INC	EP 7 Whitmoor Phase 4
F	48	Tributary to Dardenne Cr.	Whitmoor		WHITTAKER GOLF INC	EP 58 Whitmoor Phase 4
F	49	Tributary to Dardenne Cr.	Whitmoor		WHITTAKER GOLF INC	EP 54 Whitmoor Phase 4
F	50	Tributary to Dardenne Cr.	Whitmoor		WHITTAKER GOLF INC	EP 1 Whitmoor Phase 4
F	51	Tributary to Dardenne Cr.	Whitmoor		WHITTAKER GOLF INC	EP 42 Whitmoor Phase 4
F	52	Tributary to Dardenne Cr.	Whitmoor		WHITTAKER GOLF INC	EP 22 Whitmoor Phase 4
F	53	Tributary to Dardenne Cr.	Whitmoor		WHITTAKER GOLF INC	EP 17 Whitmoor Phase 4
F	54	Tributary to Dardenne Cr.	Whitmoor		WHITTAKER GOLF INC	FE 10 Whitmoor Phase 4
F	55	Tributary to Dardenne Cr.	Whitmoor		Crosshaven HOA	FE 1 Crosshaven Outfall to Whitmoor from Detention
F	56	Tributary to Dardenne Cr.	Whitmoor		Crosshaven HOA	FE 8 Crosshaven Discharge into Detention
F	57	Tributary to Dardenne Cr.	Whitmoor		Crosshaven HOA	FE 12 Crosshaven Discharge into Detention
F	58	Tributary to Dardenne Cr.	Pitman Hill		City of Weldon Spring	EP 79 Pitman Hill Improvements
F	59	Tributary to Dardenne Cr.	Pitman Hill	1	City of Weldon Spring	EP 81A Pitman Hill Improvements discharge to swale
F	60	Tributary to Dardenne Cr.	Pitman Hill	1	City of Weldon Spring	FE 89 Pitman Hill Improvements discharge to swale
F	61	Tributary to Dardenne Cr.	Pitman Hill	1	City of Weldon Spring	FE 99 Pitman Hill Improvements discharge to swale
F	62	Tributary to Dardenne Cr.	Whitmoor		WHITTAKER GOLF INC	FE 2-59 Whitmoor Phase 2
F	63	Tributary to Dardenne Cr.	Whitmoor		WHITTAKER GOLF INC	FE 6 Crosshaven Phase 1
F	64	Tributary to Dardenne Cr.	Whitmoor		WHITTAKER GOLF INC	FE 403 Summit at Whitmoor
G		Tributary to Missouri River	Katy Trail		State of Missouri	Outfall at City Border
G	1	Tributary to Missouri River	Hartwig/Meadows/School Road		FRANCIS HOWELL R III SCHOOL DISTRICT	Discharge Outfall from Detention, FES 1 36" RCP
G	2	Tributary to Missouri River	Hartwig/Meadows/School Road		FRANCIS HOWELL R III SCHOOL DISTRICT	Parking lot outfall to Detention
G	3	Tributary to Missouri River	Hartwig/Meadows/School Road		FRANCIS HOWELL R III SCHOOL DISTRICT	Parking lot outfall to Detention
G	4	Tributary to Missouri River	Hartwig/Meadows/School Road		FRANCIS HOWELL R III SCHOOL DISTRICT	Cross Road Pipe
G	5	Tributary to Missouri River	Hartwig/Meadows/School Road		FRANCIS HOWELL R III SCHOOL DISTRICT	Discharge Outfall from Detention
G	6	Tributary to Missouri River	Hartwig/Meadows/School Road		FRANCIS HOWELL R III SCHOOL DISTRICT	Parking lot outfall to Detention
G	7	Tributary to Missouri River	Hartwig/Meadows/School Road		FRANCIS HOWELL R III SCHOOL DISTRICT	Cross Road Pipe

2021 Annual MS4 Report - February 2022

G	8	Tributary to Missouri River	Hartwig/Meadows/School Road		FRANCIS HOWELL R III SCHOOL DISTRICT	Cross Road Pipe
G	9	Tributary to Missouri River	Hartwig/Meadows/School Road		WORLDCOM TECHNOLOGIES INC	Outfall in Detention from Parking 21
G	10	Tributary to Missouri River	Hartwig/Meadows/School Road		WORLDCOM TECHNOLOGIES INC	Outfall to Property Line from Detention
G	11	Tributary to Missouri River	Hartwig/Meadows/School Road		WORLDCOM TECHNOLOGIES INC	Riser / Overflow Structure in Detention 45
G	12	Tributary to Missouri River	Hartwig/Meadows/School Road		WORLDCOM TECHNOLOGIES INC	Outfall in Detention from Parking 19
G	13	Tributary to Missouri River	Wycliff / Independence		City of Weldon Spring	Discharge Outfall from Independence
G	14	Tributary to Missouri River	Westchester		Westchester HOA	Outfall from Westchester Detention, FE 50
G	15	Tributary to Missouri River	Westchester		Westchester HOA	Discharge from Westchester Meadows to detention FE52
G	16	Tributary to Missouri River	Westchester		Westchester HOA	Discharge From Canterfield to Detention FE 63
G	17	Tributary to Missouri River	Westchester		Westchester HOA	Discharge from Canterfield to Detention FE 69
G	18	Tributary to Missouri River	Camelot Perceval	1	Camelot HOA	FE 2-81 Phase 2 Outfall from Peerceval Ct to creek
G	19	Tributary to Missouri River	Camelot Perceval		Camelot HOA	FE 2-46A Phase 2 Lake D overflow discharge to creek
G	20	Tributary to Missouri River	Camelot Perceval	1	Camelot HOA	FE 2-46 Phase 2 Outfall from Perceval inlets into Lake
G	21	Tributary to Missouri River	Camelot - Galahad	1	Camelot HOA	FE 2-51 Phase 2 Outfall from Gallahad Ct. to ditch
G	22	Tributary to Missouri River	Camelot - Galahad	1	Camelot HOA	FE 2-75 Phase 2 Outfall from Merlin Ct. to ditch
G	23	Tributary to Missouri River	Camelot - Galahad	1	Camelot HOA	FE 2-53 Phase 2 Outfall from Gallahad to ditch
G	24	Tributary to Missouri River	Camelot - Merlin	1	Camelot HOA	FE 2-72 Phase 2 Outfall from Merlin to ditch
G	25	Tributary to Missouri River	Camelot - Merlin	1	Camelot HOA	FE 2-66 Phase 2 Outfall from Enchanted to ditch
G	26	Tributary to Missouri River	Camelot - Guinevere Cul-de-sac	1	Camelot HOA - Broke Pipe	FE 2-83 Phase 2 Outfall from Guinevere Ct. to ditch
G	27	Tributary to Missouri River	Camelot		Camelot HOA	FE 2-95A Phase 2 - Outfall from Lake Overflow pipe
G	28	Tributary to Missouri River	Camelot - Legend Ct.	1	Camelot HOA	FE 2-95 Phase 2 Outfall from Legend Ct to Lake
G	29	Tributary to Missouri River	Camelot - Grail Castle	1	Camelot HOA	FE 2-98 Phase 2 Outfall from Grail Castle Ct to creek
G	30	Tributary to Missouri River	Camelot - Guinevere Ct.	1	Camelot HOA	FE 2-85 Phase 2 Outfall from Guinevere Ct. to creek
G	31	Tributary to Missouri River	Camelot - Guinevere Dr		Camelot HOA	FE 2-88 Phase 2 Discharge to creek from area inlets
G	32	Tributary to Missouri River	Camelot - Camelot Drive	1	Camelot HOA	FE 30 Camelot Phase 1 - Discharge from Camelot Dr.
G	33	Tributary to Missouri River	Camelot - Legend Ct.	1	Camelot HOA	FE 2-93 Phase 2 Outfall from Legend Ct. to creek
G	34	Tributary to Missouri River	Camelot - Dry Detention Basin E		Camelot HOA	FE 2-31A Phase 2 Outfall from Detention E to creek
G	35	Tributary to Missouri River	Camelot - Caliburn Ct.		Camelot HOA	FE 2-31 Phase 2 Outfall from Caliburn Ct to Detention
G	36	Tributary to Missouri River	Camelot - Gareth	1	Camelot HOA	FE 2-35 Phase 2 Outfall from Gareth to creek
G	37	Tributary to Missouri River	Camelot - Guinevere Drive	1	Camelot HOA	FE 2-38 Phase 2 Outfall from Guinevere Inlets
G	38	Tributary to Missouri River	Camelot - Guinevere Drive	1	Camelot HOA	FE 2-43 Phase 2 Discharge from Guinevere to backyard
G	39	Tributary to Missouri River	Camelot		City of Weldon Spring	EP - Unnamed Cross Road Pipe
G	40	Tributary to Missouri River	Camelot - Agravaine Cul de sac		Camelot HOA	FE 2-1 Phase 2 - Outfall from Basin G to creek
G	41	Tributary to Missouri River	Camelot - Agravaine Cul de sac		Camelot HOA	FE 2-8 Phase 2 Discharge from Agravaine into Basin G
G	42	Tributary to Missouri River	Camelot - Camelot Drive		Camelot HOA	FE 2-3 Phase 2 Discharge from Camelot Drive to det
G	43	Tributary to Missouri River	Camelot - Wizard Ct	1	Camelot HOA	FE 2-10 Phase 2 Outfall from Wizard Ct to ditch
G	44	Tributary to Missouri River	Camelot - Between Camelot and Lancelot		Camelot HOA	FE 2-12A Phase 2 Outfall from Lake F overflow
G	45	Tributary to Missouri River	Camelot - Camelot Drive	1	Camelot HOA	FE 2-13 Phase 2 Outfall from Camelot Dr inlets to Lake F
G	46	Tributary to Missouri River	Camelot - Lancelot		Camelot HOA	FE 2-20 Phase 2 - Outfall from backyards to Lake F
G	47	Tributary to Missouri River	Camelot - Lancelot	1	Camelot HOA	FE 2-26 Phase 2 - Outfall from Lancelot inlets to Lake F
G	48	Tributary to Missouri River	Camelot - Lancelot		Camelot HOA	FE 2-28 Phase 2 - Outfall from Lancelot Drive to swale
H		Tributary to Missouri River	Katy Trail		State of Missouri	
I		Tributary to Missouri River	Katy Trail		State of Missouri	
I	1	Tributary to Missouri River	Whitmoor - Grey Fox		WHITTAKER GOLF INC	FE 44 Whitmoor Detention
I	2	Tributary to Missouri River	Whitmoor - Grey Fox		WHITTAKER GOLF INC	EP 40 Whitmoor Phase 1
I	3	Tributary to Missouri River	Whitmoor - Grey Fox		WHITTAKER GOLF INC	EP 51 Whitmoor Phase 1
I	4	Tributary to Missouri River	Whitmoor - Grey Fox		WHITTAKER GOLF INC	EP 54 Whitmoor Phase 1
I	5	Tributary to Missouri River	Willow Lake- Wolfrum Road		?	FE 16
J		Tributary to Missouri River	Katy Trail		State of Missouri	
K		Tributary to Missouri River	Katy Trail		State of Missouri	

2021 Annual MS4 Report - February 2022

L		Tributary to Missouri River	Katy Trail - Austin Ridge		State of Missouri	
L	1	Tributary to Missouri River	Summit at Whitmoor	1		FE 302 Outfall from Detention Basin OS
L	2	Tributary to Missouri River	Summit at Whitmoor			FE 100 Discharge from Summit Ridge to detention
L	3	Tributary to Missouri River	Whitmoor Phase 4		WHITTAKER GOLF INC	EP 51 Whitmoor Phase 4
Total Number of Weldon Spring Maintained Outfalls				51		

Outfall Tracing Guide – new 2021

MS4 SWPPP

Outfall Tracing
This shows the main developments draining to each outfall.

City of Weldon Spring

Outfall	A	B	C	D	E	F	G	H	I	J	K	L
River	Mississippi Dardene Creek	Mississippi Dardene Creek	Mississippi Dardene Creek	Mississippi Dardene Creek	Mississippi Dardene Creek	Mississippi Dardene Creek	Missouri River	Missouri River	Missouri River	Missouri River	Missouri River	Missouri River
Tributary	Crooked Creek	Crooked Creek	Crooked Creek	Crooked Creek	Baltic Creek	Baltic Creek	Old Wolfrum Tracts (Walsh/Hawthorn/Moore)	Old Wolfrum Tracts (Walsh/Prov3 56/Tavalo)	Old Wolfrum Tracts (kolb/Walsh) STRATHALBYN CLUB	Old Wolfrum Tracts (Walsh / Kolb)	Upper Whitmoor (SCCO-Austin Ridge)	
Tributary	Persimmon Wood Golf	Persimmon Woods Golf	kolb	Wrenwyck	Pitnam Hill Road	Veteran's Tribute Park	Old Wolfrum Tracts (Walsh/Hawthorn/Moore)	Old Wolfrum Tracts (Walsh/Prov3 56/Tavalo)	Old Wolfrum Tracts (kolb/Walsh) STRATHALBYN CLUB	Old Wolfrum Tracts (Walsh / Kolb)	Upper Whitmoor (SCCO-Austin Ridge)	
		Faith Church		Lutheran Senior	Manors of Lucerne	Whitmoor	Bender					
		Trace Apartments		Westchester Farms	Renasiance Place	Roseberry Topping	FHSD		Whitmoor			
		Chapter One		Westerfield	Ehlmann Farms	Crosshaven	Wycliff / Dutchman					
		Osage Park		El Caballos	The Highlands		Camelot					
		FHSD		Butterfly Lane	Whitmoor							
		Fab Tech		Independence	St. John's Church							
		Walmar Industrial			Williamsburg on the Green							
		Christian Life Center			City Hall and Park							
		Plaza Motors			Rodelle Woods							
		Ameren Fire Department			Camelot							
		Heartland Bank			Grey Oaks							
		Route 94			Willow Lakes							
		Centerpointe Hospital										
		Southbrook Forest										
		QT										
		Hunters Green										



General State Operating Permit
MOR04C070

2/9/2022

Forms and Checklists



City of Weldon Spring MS4

Outfall Monitoring Field Datasheet

Date: _____ Time: _____ AM/PM

Location: _____

Outfall: A B C D E F G H I J

Crooked Creek ☐ A Persimmon Woods ☐ B Persimmon Woods, Vanguard, Chapter 1, Cedar Glen, Huber, Enterprise Leasing, Hunters Green, Center Point Hospital, QT, Francis Howell, Messiah Lutheran, Plaza Motors, Ozark Way, MSHP ☐ C Kolb ☐ D Wrenwyck

Baltic Creek / Tributary 7 ☐ E Manors of Lucerne, Ehlmann Farms, Highlands, Williamsburg, City Park, Nancy Lane

☐ F Veterans Tribute Park, Whitmoor CC, Crosshaven

Missouri River ☐ G Katy, Independence Elementary, Bryan Middle Dutchman, Camelot - Patriotic, Gallahad, Perceval ☐ H Katy Old Wolfrum ☐ I Katy, Wolfrum, Whitmoor - Grey Fox, Gun Club ☐ J Katy, Gun Club, ☐ K Katy, 1/2 Upper Whitmoor (Austin Ridge) ☐ L Katy

Weather: ☐ Clear ☐ Cloudy Air Temp _____ F, Water Temp _____ F

Last Rain / Precipitation ☐ < 72 Hours ☐ > 72 Hours Inspections should be after 72 hours.

Flow? Y / N Source: ☐ Ground Water ☐ Sprinklers ☐ Other _____

Estimate Flow ☐ None ☐ Trickle ☐ _____

☐ Natural Creek ☐ Concrete Channel ☐ Manhole ☐ Culvert/Pipe Outfall ☐ Earthen Channel

Observations:

Odor	None	Sewage	Sulfides	Petroleum	Manure	
Color	None	Yellow	Brown	White	Other	
Turbidity	Clear	Cloudy	Murky	Dry		
Floatables	None	Trash	Bubble	Foam	Oil Sheen	Scum / Algae
Condition	Normal	Blockage	Damage			
Impact?	<input type="checkbox"/> No Length of Stream Impact: Other: _____					

Photos? ☐ No ☐ Yes Storage Location: G:Bill'sPhotos/OutfallInspections/_____

☐ No

☐ Yes Storage Location _____

Notes:

Signature _____ Date _____

FORM WSMS4OutfallMonitor2021



City of Weldon Spring Storm Water Management Documentation

Date _____

Time _____

AM/PM

<input type="checkbox"/> Public Education and Outreach	<input type="checkbox"/> Construction Site Erosion Control	<input type="checkbox"/> Public Participation & Involvement
<input type="checkbox"/> Post Construction Stormwater Management	<input type="checkbox"/> Illicit Discharge Detection and Elimination-	<input type="checkbox"/> Pollution Prevention and Good Housekeeping-

LOCATION / ADDRESS _____

CONTACT INFORMATION _____

SUMMARY

☐ Photos Taken ☐ Attached ☐ Computer Drive Stored _____

Type of Inspection / Review / Documentation

☐ N/A ☐ Routine ☐ During Storm Event ☐ Post-Storm Event ☐ Citizen Concern

Focus / Inspection Area

☐ Outfall ☐ Detention ☐ Creek / Stream ☐ Inlets / Pipes ☐ Slopes / Field
☐ Construction Site ☐ Building/Home Site ☐ Vehicles / Equipment ☐ Education / Involvement

Observations / Findings

Corrective Actions or Follow-Up Needed? Y/N

Follow Up Notes

☐ Corrective Actions Completed _____

☐ N/A

☐ See Attached Notes

Signature _____ Date _____

LAND DISTURBANCE WEEKLY INSPECTION

CITY OF WELDON SPRING
5401 Independence Road, Weldon Spring, MO 63304
636-441-2110



This form is to be filled out weekly, and after a 1" rain event within 24 hours. **This form is to be emailed To cityengineer@weldonspring.org on a weekly basis on Monday morning of every week.**

Permit No.: _____ Week Ending: _____

Project Address: _____

Contractor: _____

Inspected By: _____ Phone: _____

☐ Weekly Inspection ☐ Post Event _____

Site Observations:

	Satisfactory	Deficient	Replace	N/A
Perimeter Protection	<input type="checkbox"/>	<input type="checkbox"/>	<input type="checkbox"/>	<input type="checkbox"/>
Stock Piles Stabilized	<input type="checkbox"/>	<input type="checkbox"/>	<input type="checkbox"/>	<input type="checkbox"/>
Sediment Control for Disturbed Areas	<input type="checkbox"/>	<input type="checkbox"/>	<input type="checkbox"/>	<input type="checkbox"/>
Ditch Checks	<input type="checkbox"/>	<input type="checkbox"/>	<input type="checkbox"/>	<input type="checkbox"/>
Inlet Protection	<input type="checkbox"/>	<input type="checkbox"/>	<input type="checkbox"/>	<input type="checkbox"/>
Sediment Basins/Traps	<input type="checkbox"/>	<input type="checkbox"/>	<input type="checkbox"/>	<input type="checkbox"/>
Erosion at Discharge Points	<input type="checkbox"/>	<input type="checkbox"/>	<input type="checkbox"/>	<input type="checkbox"/>
Vegetative Cover	<input type="checkbox"/>	<input type="checkbox"/>	<input type="checkbox"/>	<input type="checkbox"/>
Wash-Off Operation	<input type="checkbox"/>	<input type="checkbox"/>	<input type="checkbox"/>	<input type="checkbox"/>
_____	<input type="checkbox"/>	<input type="checkbox"/>	<input type="checkbox"/>	<input type="checkbox"/>
_____	<input type="checkbox"/>	<input type="checkbox"/>	<input type="checkbox"/>	<input type="checkbox"/>

Attach additional sheets if necessary

Areas where land disturbance activities started: _____

List problem areas and corrective steps taken: _____

Inspector's Signature: _____ Date: _____

WELDON SPRING MS4 FACILITY & PARK INSPECTION CHECKLIST
MS4 Measure #6 Prevention and Good Housekeeping
Exterior Areas

Facility Name: _____

Date of Inspection: _____

Name of Inspector: _____

☐ Additional comments on back of page

Park Building and Vehicle Storage Areas	OK YES	Needs work NO	N/A	Location	Comments
City Pickup Truck clean and not leaking fluids					
City mowers clean and not leaking fluids					
City tractor / loader clean and not leaking fluids					
City battery operated golf carts working and not leaking battery fluid					
All vehicles washed at private off-site car washes					
Fuel / Oil / Chemicals stored safely					
Exterior water spigots not dripping or leaking					
Absorbent spill bags/kit available for any leaks					
Secondary containment for any stored liquids > 50 gallons					
Buildings free from mold/mildew					
Adequate water drainage near foundation (no standing water)					
Building swept and kept clean					
Dumpster and trash collection areas	OK	Needs work	N/A	Location	Comments
Dumpster doors close properly					
Dumpster drains plugged or screened					
No leaking fluid from Dumpsters					
Exterior trash cans have plastic liners and tight-fitting lids					
Pet Waste Disposal Stations with plenty of bags					
No loose trash around dumpsters and/or trash cans					

WELDON SPRING MS4 FACILITY & PARK INSPECTION CHECKLIST
MS4 Measure #6 Prevention and Good Housekeeping
Exterior Areas

Facility Name: _____

Date of Inspection: _____

Name of Inspector _____

☐ Additional comments on back of page

<i>Park Grounds and Building Exterior</i>	<i>OK YES</i>	<i>Needs work NO</i>	<i>N/A</i>	<i>Location</i>	<i>Comments</i>
Park grounds free of eroded area					
City pond aquatic life healthy					
City pond banks free of erosion					
City pond overflow structure / pipes free of obstructions and maintained					
Bio detention area maintained and functioning					
Parking lots free of debris, silt, tracked materials					

[] photos attached storage location _____

Notes:



City Engineer Checklist for: _____

General

- ☐ Applicant's Contact Information Included? Name/Address/Phone/Email ☐ Yes ☐ No
- ☐ Approved by Weldon Spring Planning and Zoning? ☐ Yes ☐ No ☐ N/A
- ☐ Professional Engineer Seal and Signature? ☐ Yes ☐ No ☐ N/A
- ☐ Engineer / Architect / Surveyor / Landscape Architects contact information? ☐ Yes ☐ No ☐ N/A
- ☐ Certification Plan meets all Weldon Spring / St. Charles County Ordinances? ☐ Yes ☐ No ☐ N/A
- ☐ Plan Date and All Revision Dates with Description of Revisions? ☐ Yes ☐ No ☐ N/A
- ☐ Titles and Numbering on all plan sheets? ☐ Yes ☐ No ☐ N/A
- ☐ Scale and graphic scale shown? ☐ Yes ☐ No ☐ N/A
- ☐ North Arrow? ☐ Yes ☐ No
- ☐ Plan Legend with all lines and symbols? ☐ Yes ☐ No ☐ N/A
- ☐ Boundary Survey of site? ☐ Yes ☐ No ☐ N/A
- ☐ Property Information shown on plans? Owner, Parcel Number ☐ Yes ☐ No
- ☐ Existing and Proposed Utilities and Easements shown? ☐ Yes ☐ No ☐ N/A
- ☐ Existing and Proposed Public Right-of-Ways / Easements shown? ☐ Yes ☐ No ☐ N/A
- ☐ Existing and Proposed Drainage Easements Shown? ☐ Yes ☐ No ☐ N/A
- ☐ Sidewalks, Shared Use Paths Shown and Compliant? ☐ Yes ☐ No ☐ N/A

Storm Water Management / MS4 / Drainage

- ☐ Topography of site showing existing and proposed contours 1' max ☐ Yes ☐ No ☐ N/A
- ☐ Drainage culverts shown under driveways, ditch line maintained? ☐ Yes ☐ No ☐ N/A
- ☐ Floodplain Limits Shown? ☐ Yes ☐ No ☐ N/A
- ☐ Are there known Drainage Issues downstream of this development? ☐ Yes ☐ No
- ☐ Buffer Areas Maintained according to Ordinances? ☐ Yes ☐ No ☐ N/A
- ☐ Drain Patterns with flow arrows shown? ☐ Yes ☐ No ☐ N/A
- ☐ Hydrology Calculations of pre-developed and post-developed conditions? ☐ Yes ☐ No ☐ N/A
- ☐ Environmentally sensitive areas shown? Wetlands, riparian buffers? ☐ Yes ☐ No ☐ N/A
- ☐ Disturbed area > 1 Acre? ☐ Yes - MoDNR Land Disturbance Permit Needed ☐ No
- ☐ Industrial Site / Commercial Car Wash / Potential Pollutant Concern? ☐ Yes ☐ No ☐ N/A
- ☐ Detention / Retention Basin Design ? ☐ Yes ☐ No ☐ N/A
- ☐ Green Infrastructure Included? ☐ Yes ☐ No ☐ N/A
- ☐ Maintenance Plan for Detention / Retention Basin / Green Infrastructure Included? ☐ Yes ☐ No ☐ N/A
- ☐ Industrial - Stormwater ordinances and requirements to owner? ☐ Yes ☐ No ☐ N/A
- ☐ Pool - Stormwater ordinances and requirements to owner? ☐ Yes ☐ No ☐ N/A
- ☐ Erosion and Sediment Control Plan Provided? ☐ Yes ☐ No ☐ N/A



SWPPP Checklist for Disturbances > 1 Acre

- | | |
|--|---|
| <input type="checkbox"/> SWPPP Included on plans for disturbances >1 Acre? | <input type="checkbox"/> Yes <input type="checkbox"/> No <input type="checkbox"/> N/A |
| <input type="checkbox"/> 24 Hour Emergency Contacts provided? | <input type="checkbox"/> Yes <input type="checkbox"/> No <input type="checkbox"/> N/A |
| <input type="checkbox"/> Engineer Certification of Design/Specs.? | <input type="checkbox"/> Yes <input type="checkbox"/> No <input type="checkbox"/> N/A |
| <input type="checkbox"/> Copy of the SWPPP will be kept onsite? | <input type="checkbox"/> Yes <input type="checkbox"/> No <input type="checkbox"/> N/A |
| <input type="checkbox"/> Rock construction entrances/exits, | <input type="checkbox"/> Yes <input type="checkbox"/> No <input type="checkbox"/> N/A |
| <input type="checkbox"/> Vehicle wash area to prevent tracking? | <input type="checkbox"/> Yes <input type="checkbox"/> No <input type="checkbox"/> N/A |
| <input type="checkbox"/> Copy of the SWPPP will be kept onsite? | <input type="checkbox"/> Yes <input type="checkbox"/> No <input type="checkbox"/> N/A |
| <input type="checkbox"/> Note weekly/post event inspections to be emailed to City? | <input type="checkbox"/> Yes <input type="checkbox"/> No <input type="checkbox"/> N/A |
| <input type="checkbox"/> Video Inspection of any future City maintained Culverts? | <input type="checkbox"/> Yes <input type="checkbox"/> No <input type="checkbox"/> N/A |
| <input type="checkbox"/> Operating Manual for Structural Improvements? | <input type="checkbox"/> Yes <input type="checkbox"/> No <input type="checkbox"/> N/A |
| <input type="checkbox"/> Agreement for Future Maintenance? | <input type="checkbox"/> Yes <input type="checkbox"/> No <input type="checkbox"/> N/A |

NOTES

Signature

Date

MS4 Educational Handouts

Community Partners with Volunteer Opportunities

Stream Team Missouri
<http://www.mostreamteam.org/>

MoDOT Adopt a Highway
<https://www.modot.org/adopt-highway>

Missouri Department of Conservation
<https://mdc.mo.gov/contact-engage/volunteer-opportunities>

Missouri State Parks - Katy Trail
<https://mostateparks.com/page/57875/individual-volunteer-opportunities>

US Department of Energy Weldon Spring
<https://www.energy.gov/im/weldon-spring-site-missouri>

St. Charles County, Missouri
<https://www.sccmo.org/884/Volunteering>



City of Weldon Spring
5401 Independence Road
Weldon Spring, MO 63304
636-441-2110
www.weldonspring.org

Get Involved!

VOLUNTEER OPPORTUNITIES

MS4



City of Weldon Spring
5401 Independence Road
Weldon Spring, MO 63304
636-441-2110
www.weldonspring.org



*Volunteer Tree Planting
Opportunities*

MS4 Volunteer and Involvement Opportunities

A municipal separate storm sewer system (**MS4**) is a publicly-owned conveyance or system of conveyances (i.e., ditches, curbs, catch basins, underground pipes, etc.) designed or used for collecting or conveying stormwater and that discharges to surface waters of the state. Missouri has approximately 162 regulated Municipal Separate Storm Sewer Systems, or MS4s. The City of Weldon Spring is one of approximately 159 regulated MS4s have populations between 1,000 and 100,000 and are regulated under the Master General Permit for Small MS4s (Phase IIs).

The general permit for small MS4s requires the development and implementation of a formal, written Stormwater management program plan or SWMP.

One requirement of the MS4 Permit is providing public participation and involvement opportunities. Providing opportunities for citizens to participate in program development and implementation, including effectively publicizing public hearings and/or encouraging citizen representatives on a stormwater management panel.

Stream Team Cleanups

The City of Weldon Spring partners with Missouri Stream Team to assist in cleanups of our watersheds. The location is typically the Missouri River, a tributary or the Veteran's Memorial County park located in the City.

Tree Planting

Once a year, the City of Weldon Spring gets native Missouri trees from Forest ReLeaf of Missouri to improve the environment on our public spaces. You can help plant a tree for tomorrow!

Bush Honeysuckle Removal

Bush Honeysuckle is an invasive species that is one of the first plants to bloom each spring and last to drop its leaves. As a result it chokes out native plants which leads to erosion. The City partners with Missouri Conservation at nearby Busch Wildlife to train how to properly remove these plants. This is an annual opportunity to learn and then practice what you've learned.

Community Cleanups

The City of Weldon Spring will assist local groups in to clean up public spaces within the City by supplying trash bags and disposing the filled bags. Contact the City Hall if you'd like to organize a community cleanup.

*Missouri River
and Park
Cleanups*



Youth / Scouting / School Projects

The City would be eager to discuss potential projects for individuals or groups to make a positive contribution to the community.

Stormwater / MS4 Plan Volunteers

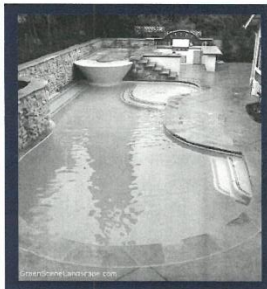
The City has a Storm Water Management Plan and updates it with adaptive management. The City is always looking for ways to adapt to the current times and update our Stormwater Management Plan to make it better.

How to Volunteer

The City is excited about getting you involved improving our community!

If you are interested or want to learn more about these opportunities, please contact the City Engineer at 626-441-2110 or send an email to cityengineer@weldonspring.org.

Volunteer Opportunities in WELDON SPRING, MO



Helpful Contacts:



Weldon Spring City Hall

636.441.2110

St. Charles County Building Division

636.949.7345

Missouri American Water

1.866.430.0820

Duckett Creek

636.441.1244



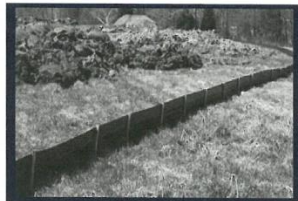
Pool Construction Procedures

Before you start Permitting:

- Review your subdivision Homeowners Association (HOA) restrictions and contact your trustees.
- Obtain an approved multi-purpose land use permit from The City of Weldon Spring.
- Obtain a building permit from St. Charles County.
- Must be at least 10 ft. from the dwelling.
- Must not be closer than 10 ft. to property lines or 5 ft. to easements, whichever is greater.
- Must be located only in your home's rear or side yard.
- Must meet minimum fencing requirements.

What to know During Construction:

- Do not store material or equipment on roadways.
- Put a perimeter siltation fence around excavation paths.
- Follow city ordinances on erosion/sediment control.
- Disturbed areas must be seeded or sodded within 14 days.
- When filling your pool, you cannot use fire hydrants without approval from Missouri American Water.



Siltation fence shall be installed
around the excavation.

Keep in mind Pool Operations:

- A permanent fence surrounding your pool must be built within seven days of completion of the pool.
- Do not release chlorinated water from your pool into the stormwater system.
- Do not discharge saltwater from your pool into stormwater system.
- Do not dispose of any pool cleaning chemicals into the stormwater system.

Important Links

City Ordinances:

www.weldonspring.org

To Report Illicit Discharge:

City Hall: 636.441.2210

Missouri Department of Natural
Resources:

314.416.2960

Door Hanger

Stormwater Pollution Found In Your Area!

This is not a citation.

This is to inform you that our staff found the following pollutants in the storm sewer system in your area. The storm sewer system leads directly to waters of the State and flow to the Missouri or Mississippi River in the City of Weldon Spring. It is against Federal, State and Municipal laws to have illicit discharges into the storm sewer system.

Signs of the following were found in your area:

- ☐ Motor Oil
- ☐ Oil Filters
- ☐ Antifreeze / Transmission Fluid
- ☐ Paint
- ☐ Leaves/ Grass / Yard Waste
- ☐ Pet Waste
- ☐ Concrete / Cement / Mortar
- ☐ Excess Dirt / Rock
- ☐ Construction Debris
- ☐ Cooking Grease
- ☐ Detergents

Other

☐ _____

**For more information or to report any illicit
discharge in your area, please call:**

**City of Weldon Spring
(636) 441-4110**

**For Emergency Spills
Call 911**

Stormwater runoff is precipitation from rain or snowmelt that flows over the ground. As it flows, it picks up debris, chemicals, dirt, and other pollutants and deposits them into a storm sewer system or waterbody.

Anything that enters a storm sewer system is discharged untreated into the waterbodies we use for swimming, fishing, recreation and providing for our drinking water.

Remember only Rain down the Drain!

To keep the stormwater leaving your home or workplace clean, follow these simple guidelines:

- Use pesticides and fertilizers sparingly.
- Repair auto leaks.
- Dispose of household hazardous waste, used auto fluids, and batteries at designated or recycling locations.
- Clean up after your pets.
- Use a commercial car wash or wash your car on a lawn or unpaved surface.
- Sweep up yard debris. Do not blow grass clippings or leaves into the street or drains.
- Clean paint brushes in a sink, not outdoors.
- Sweep up and properly dispose of construction debris like concrete and mortar.



SEDIMENT AND EROSION CONTROL PLAN

Sediment and erosion control and interim grading plans for grading land areas of one (1) acre or more require a Land Disturbance Permit from the Missouri Department of Natural Resources (MoDNR). The City will need a copy of the permit prior to construction. For grading of areas less than one (1) acre, but more than five thousand (5,000) square feet, an erosion control plan need not be submitted, but best practices shall include the placing of sufficient straw bales and/or silt fences to filter the stormwater runoff as it leaves the property. No ground shall remain bare for more than fourteen (14) days after cessation of grading on site. After the grading is complete any disturbed areas on the site shall be seeded and covered with straw to reestablish vegetation within thirty (30) days of completing the grading.

City of Weldon Spring
5401 Independence Road
Weldon Spring, Missouri 63304
636-411-2110

Erosion / Sediment Control Requirements for Small Construction Projects

City of Weldon Spring, Missouri
Community Development

Why is Sediment Control Required?

The purpose of a silt fence is to retain the soil on disturbed land, such as a construction site, until the activities disturbing the land are sufficiently completed to allow revegetation and permanent soil stabilization to begin. Keeping the soil on a construction site, rather than letting it be washed off into natural water bodies (e.g., streams, rivers, ponds, lakes, estuaries) prevents the degradation of aquatic habitats and siltation of harbor channels. And not letting soil wash off onto roads, which readily transport it to storm sewers, avoids having sewers clogged with sediment. The cost of installing silt fences on a watershed's construction sites is considerably less than the costs associated with losing aquatic species, dredging navigation channels, and cleaning sediment out of municipal storm sewers.

PROJECT CHECKLIST

Depending on where your property is located, plans and specifications will need to be submitted for review and approval by several entities. Allow plenty of time for review and approval of your project. It is your responsibility to review all requirements and obtain the proper approval from each agency.

- ☐ Permit from the City of Weldon Spring
- ☐ Permit from St. Charles County
- ☐ Approval from your Home Owner's Association (HOA)

Review all permit requirements and make sure your project is planned and executed accordingly.

Prior to starting construction or excavating:

- ☐ Call Dig Rite at least 3 Days Prior to any excavation work.
1-800-DIG-RITE or 811
- ☐ Install sediment control before starting any excavation work.
- ☐ No mud or dirt shall be tracked on the pavement. Any sediment leaving site must be clean up immediately.
- ☐ Plant temporary seed within 14 days of ground disturbance.
- ☐ After the grading is complete any disturbed areas on the site shall be seeded and covered with straw to reestablish vegetation within thirty (30) days of completing the grading.

CITY ORDINANCES

Construction on your property in the City of Weldon Spring typically requires review and approval by the City of Weldon Spring, St. Charles County and your Homeowner's Association (if applicable).

The City of Weldon Spring has specific ordinances to remain compliant with State and Federal Clean Water laws. Please review [Ord. No. 18-12, 12-11-2018] for more information.

A complete list of City Ordinances can be found at:

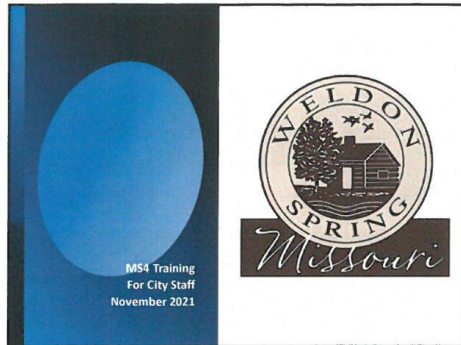
[Www.ecode360.com/WE3474](http://www.ecode360.com/WE3474)



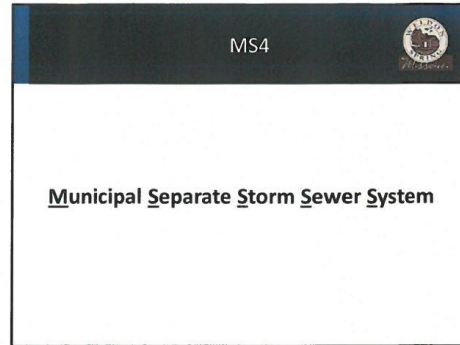
Silt Fence or Straw Bales shall be properly staked around the lower side of any open excavation to prohibit sediment from leaving site.

MS4 PowerPoints and Presentations

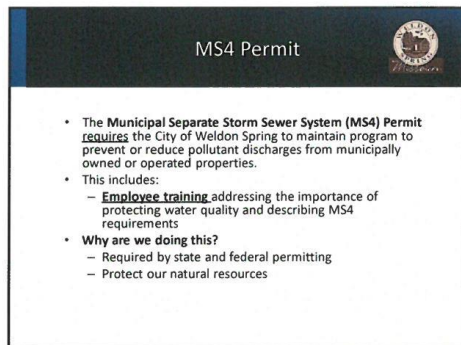
2/7/2022



1



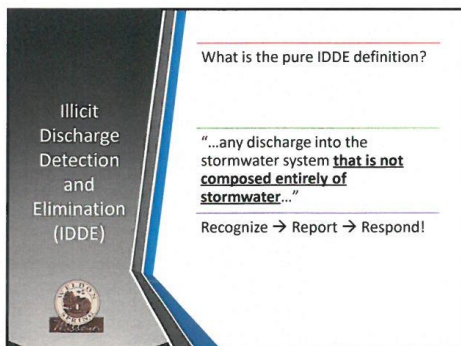
2



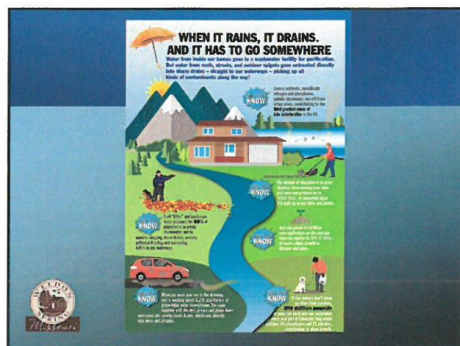
3



4



5




6


What is a BMP?

Best Management Practices


- A practice, or combination of practices, that is determined to be effective and practicable by being broadly used
- A means of preventing or reducing the amount of pollution generated to a level compatible with water quality goals.
- Silt fence, bio logs, straw blankets, bales, rock entrance, inlet baskets, etc.



7





Examples of BMPs



8


Key objective of Training

Recognize > Report > Respond

9


Inspection of Stormwater Controls









BMPs	BMPs can be damaged	At a minimum, inspections should include:	City Inspection
<ul style="list-style-type: none"> • Silt fence, inlet protection, temporary construction entrance/exit, proper wash out area, pet waste bags, trash coverage, etc. 	<ul style="list-style-type: none"> • Rainstorms • Construction activities 	<ul style="list-style-type: none"> • All areas where stormwater typically flows • All discharge points • All areas where stabilization has been implemented • Check to see if controls are implemented and functional • Check for conditions in which controls may be necessary 	<ul style="list-style-type: none"> • City Ordinances

10


Look Out For...



 Unusual colors and odors	 Cloudy or murky appearance	 Suds, trash, or debris
 Unnatural or excessive vegetation	 Leaks, spills, or dumping	 Barrels, buckets, 55 gallon drums

11

Where should I look?



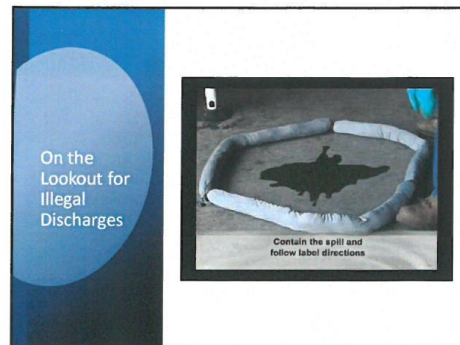
- Construction sites
- Dumpsters behind buildings
- New home building
- Curb lines
- Alleyways and parking lots
- Loading docks and outdoor storage areas
- Near our ponds, streams and rivers
- Driveways
- City Owned Facilities too!

12

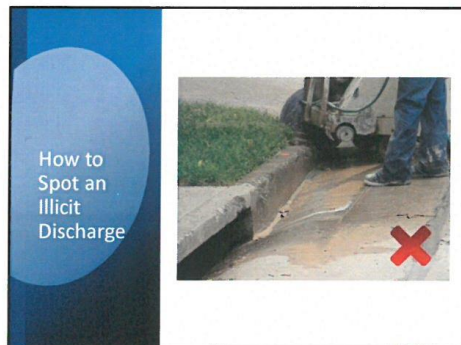
2/7/2022



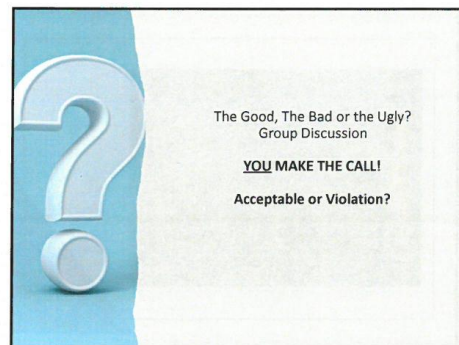
13



14



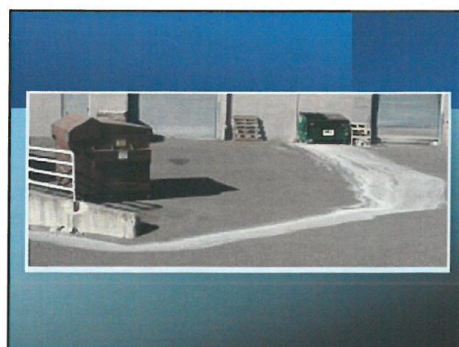
15



16

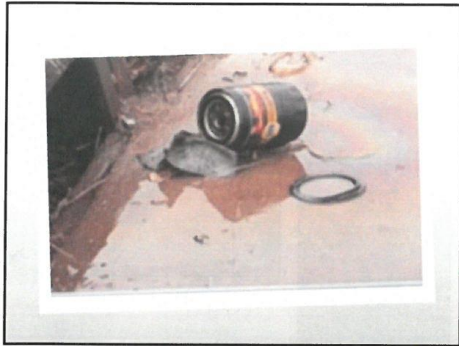


17



18

2/7/2022



19



20



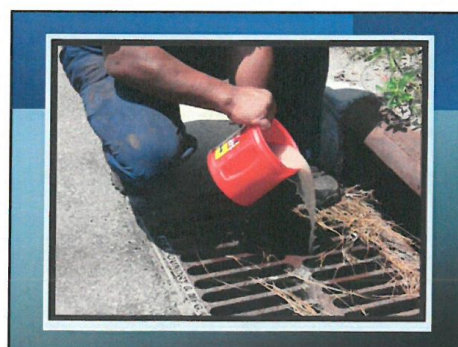
21



22

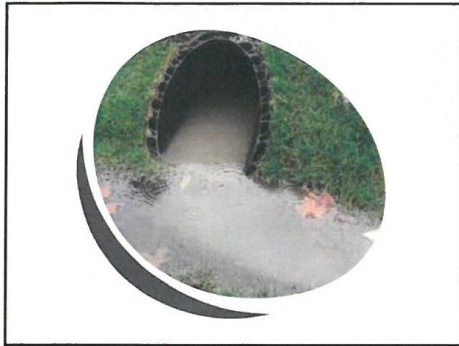


23

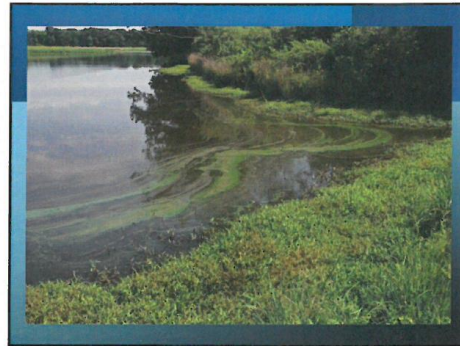


24

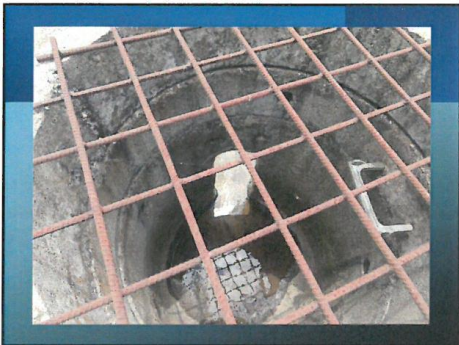
2/7/2022



25



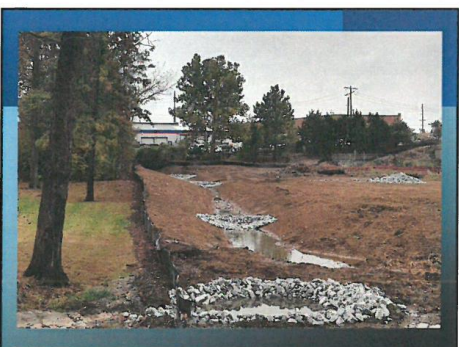
26



27



28



29



30

2/7/2022



31



32



33



34



35



36

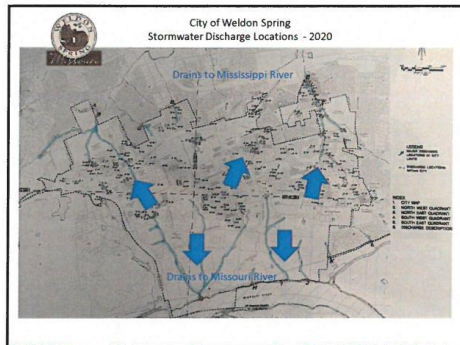
2/7/2022



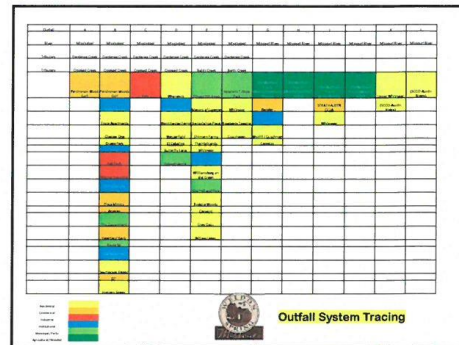
37



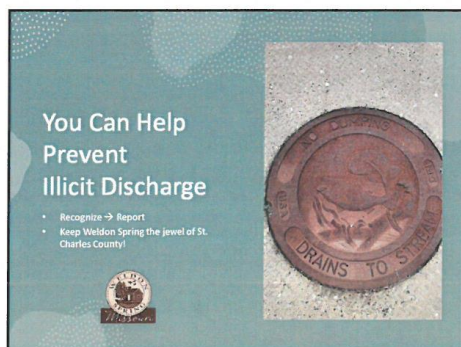
38



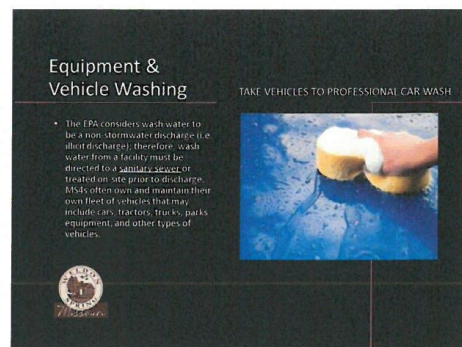
39



40

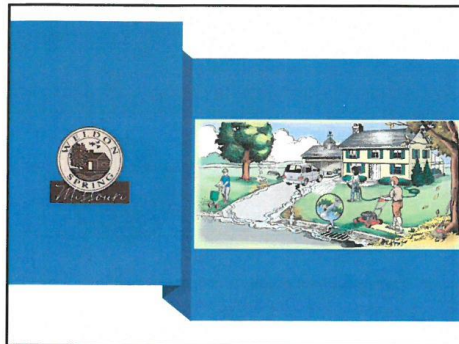


41

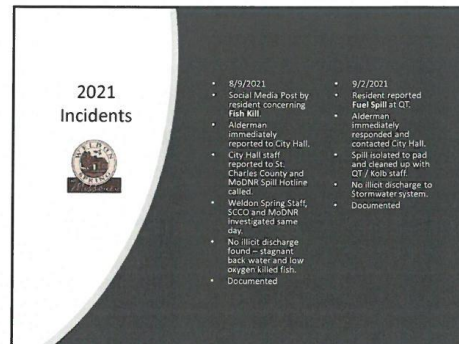


42

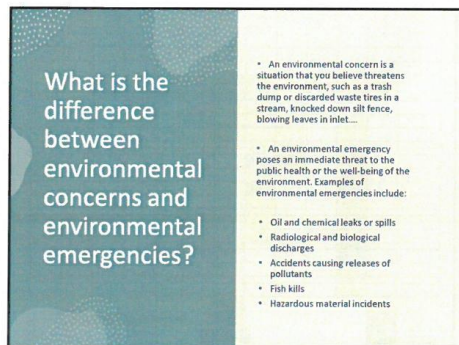
2/7/2022



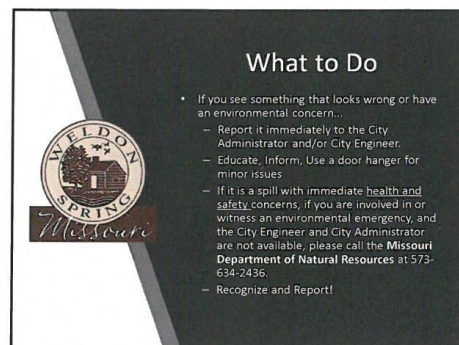
43



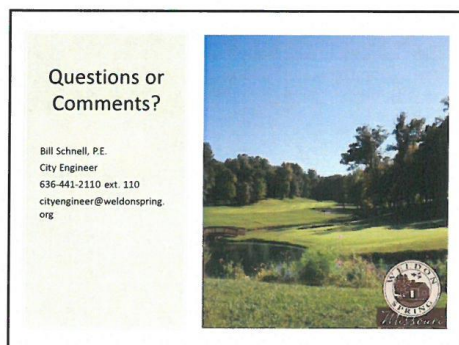
44



45



46



47

MS4 Training Documentation

Tuesday, November 16, 2021

9:00 AM – City Hall

Sign In Sheet

1. Bill Schnell
2. Howie Milweger PARKS
3. Chris Hanks PARKS
4. Steve Laner PLANNING / ZONING
5. [Signature] COMMUNITY RELATIONS
6. Bill Hanks CITY CLERK
7. Steve Stager TREASURER
8. Michael Pedella CITY ADMINISTRATOR

City Ordinances

All City Ordinance can be found online at:

<https://ecode360.com/WE3474>

2021 MS4 Log Summary

	A	B	C	D	E	F	G	H
	DATE	MCM #1 Public Education and Outreach	MCM #2 Public Participation and Outreach	MCM #3 Illicit Discharge Detection and Elimination	MCM #4 Construction Site Runoff Control	MCM #5 Post-Construction Runoff Control	MCM #6 Pollution Prevention Good Housekeeping	NOTE
1								
2								
3	1/5/2021	Newsletter Article for MS4 in Winter edition on Bush Honeysuckle which creates erosion.			Inspection of Active Land Disturbance sites - see Documentation File.			544 Guinevere pipe complaint
4	1/22/2021							
5	1/28/2021							
6	1/28/2021		Public Notice, Comment Period 1/28/2021 to -3/4/2021 for Permit Renewal. Posted on Website, Facebook, Twitter.					
7	1/28/2021	BOA / Public Meeting Presentation on MS4 Permit Renewal. 7:30PM						
8	2/5/2021							
9	2/25/2021		Public Hearing, 2pm - 4 pm, City Hall, 1 Comment received		Inspection of Active Land Disturbance sites - see Documentation File.		Good Housekeeping Inspection of City Hall and Park	
10	3/4/2021							
11	3/25/2021							
12	3/31/2021							
13	4/5/2021	MS4 Article in Spring 2021 Newsletter on Permit and New Plan		G-4 Inspection			Good Housekeeping Inspection of City Hall and Park	
14	4/6/2021			B-65, B-69, B-68, B-67, B-66				Inspection of outfalls in Cedar Glen Subdivision
15	4/22/2021		Stream Team Cleanup of Veteran's Tribute Park in Weldon Spring. City advertised and participated in event with SCCO. 20+ people collected 10 bags trash.		Inspection of Active Land Disturbance sites - see Documentation File.			
16	4/22/2021			D-1 (Private HOA) D-7, D-8, D-13				
17	4/24/2021		Volunteer Event - City Park Cleanup - Honey Suckle Removal. 20 Volunteers, BSA					
18	5/17/2021						Good Housekeeping Inspection of City Hall and Park	
19	5/27/2021				Inspection of Active Land Disturbance sites - see Documentation File.			
20	6/1/2021	City Newsletter on MS4 Topic - Construction Site Erosion Control, Summer 2021 Newsletter.						
21	6/3/2021	Information to Property owner at 570 Patricia on methods to reduce erosion.						

MS4 DOCUMENTATION LOG SUMMARY
ALL INFORMATION SUBJECT TO VERIFICATION

CITY OF WELDON SPRING

PERMIT # MCR48076

A	B	C	D	E	F	G	H
DATE	MCM #1 Public Education and Outreach	MCM #2 Public Participation and Outreach	MCM #3 Illicit Discharge Detection and Elimination	MCM #4 Construction Site Runoff Control	MCM #5 Post-Construction Runoff Control	MCM #6 Pollution Prevention Good Housekeeping	NOTE
				Issued Warning and fine potential to 820 O'Fallon Land Disturbance Permit on 6/21/2021. Repairs made on 6/23/2021.			
6/21/2021				Inspection of Active Land Disturbance sites - see Documentation File.			
7/1/2021							
7/9/2021						Good Housekeeping Inspection of City Hall and Park	
7/19/2021			B-28, B-35, Investigation of tap to storm water inlet at 5972 Mergenthal Ct. See Documentation. It was not illicit discharge. City working on process to allow taps to inlets in low spots to drain stormwater.				
7/22/2021			Investigation into drainage concern at 5334 Wooded Creek in the City of O'Fallon. Homeowner had modified grading. City of O'Fallon modifying their inlet to drain better.				
7/27/2021				30 Dutchman Inspection. See Documentation.			
7/27/2021			E-63, E-61, E-31, E-32, E-33, E-34, E-35.	820 O'Fallon Inspection. See Documentation.			
7/29/2021			B-1, B-2, B-3, B-11, B-10, B-22, B- 49, B-50	Inspection of Active Land Disturbance sites - see Documentation File.			Inspected numerous outfalls in drainage area B.
7/29/2021				820 O'Fallon Inspection. See Documentation.			
7/29/2021			E-13, Fish Kill Report and Investigation Pitman Hill Road, ModNR Contacted. No illicit discharge detected. See Documentation.				
8/5/2021				5 Pitman Hill Road - Reported to SCCO - No grading permit. See Documentation.			
8/31/2021							
9/2/2021			Fuel Spill Report and Investigation at OT. No fuel entered storm system. See Documentation.	Inspection of Active Land Disturbance sites - see Documentation File.			
9/7/2021						Good Housekeeping Inspection of City Hall and Park	
9/17/2021				30 Dutchman Inspection. See Documentation.			
9/23/2021				Inspection of Active Land Disturbance sites - see Documentation File.			

MS4 DOCUMENTATION LOG SUMMARY
for 2021 Annual MS4 Report

CITY OF WILSON SPRING

PERMIT # N0080006

A	B	C	D	E	F	G	H
DATE	MCM #1 Public Education and Outreach	MCM #2 Public Participation and Outreach	MCM #3 Illicit Discharge Detection and Elimination	MCM #4 Construction Site Runoff Control	MCM #5 Post-Construction Runoff Control	MCM #6 Pollution Prevention Good Housekeeping	NOTE
	Newsletter Article on Volunteer and Educational Information on MS4 to improve water quality.						
9/27/2021	Newsletter article on Pool and Spa Discharge Requirements in Winter 2021-2022 Edition.						
10/25/2021				Inspection of Active Land Disturbance sites - see Documentation File.			
10/28/2021							
10/29/2021							
10/31/2021			F-32			Good Housekeeping Inspection of City Hall and Park	
11/1/2021			Incident Review to determine changes to staff training.				
	Staff Training Scheduled and MS4 Powerpoint developed - See Documentation						
11/1/2021	Staff Training for 8 Employees on MS4 held at City Hall. See Documentation						
11/16/2021				Inspection of Active Land Disturbance sites - see Documentation File.			
11/23/2021							
11/29/2021	Developed new BMP for Maintaining Detention Basins. See new pamphlet in Documentation log.					Good Housekeeping Inspection of City Hall and Park	
12/2/2021			Clarification with Sarah Wright that only City Owned Outfalls need to be inspected for dry weather screening. See documentation log.				
12/6/2021	Newsletter article on Spas and Pool Discharges sent to all businesses and residents in the City.						
12/9/2021				Inspection of Active Land Disturbance sites - see Documentation File.			
12/16/2021				City Park Trail Project Land Disturbance Permit Terminated. See Documentation from MoDNR.			
12/16/2021	Website updated with new Comprehensive MS4 plan and new Permit. 2020 81 Annual Report also on website.						
12/27/2021			G-13, E-75, G-4, F-1, F-2, F-3, F-59, F-60, F-61				
12/27/2021				30 Dutchman Inspection. See Documentation.			
12/27/2021				820 O'Fallon Road Inspection. See Documentation.			
12/27/2021							

MS4 DOCUMENTATION LOG SUMMARY
SEE DOCUMENTATION FILE FOR MORE DETAILS

CITY OF WELDON SPRING

PERMIT # MDS40076

A	B	C	D	E	F	G	H
DATE	MCM #1 Public Education and Outreach	MCM #2 Public Participation and Outreach	MCM #3 Illicit Discharge Detection and Elimination	MCM #4 Construction Site Runoff Control	MCM #5 Post-Construction Runoff Control	MCM #6 Pollution Prevention Good Housekeeping	NOTE
1							
2							
3	12/28/2021			Sent email concerning inactive permit - Bender Property at 48 Wolfum.			
4	12/28/2021			Sent email to Fisher/Friel on closing permit - Ehrmann Estates.			
5							
6							
7							
8							
9							
10							
11							
12							
13							
14							
15							
16							
17							
18							
19							
20							