



Annual Report

MS4

City of Weldon Spring
February 2023
Bill J. Schnell, P.E.

Calendar Year

2022

Contents

City of Weldon Spring.....	3
What's New?.....	4
Outfall Tracing Sprdsheet	5
COVID 19 IMPACTS – 3 rd Year	6
Focus on the Environment Error! Bookmark not defined	7
The Six Minimum Control Measures (MCM #1-6).....	8
Acronyms & Definitions	9
Roles and Responsibilities	11
Public Education and Outreach (MCM#1).....	12
Public Participation/Involvement (MCM#2).....	16
Illicit Discharge Detection and Elimination (MCM#3).....	20
Post-Construction Runoff Control (MCM#5)	31
Pollution Prevention/Good Housekeeping (MCM#6).....	34
Stormwater Discharge Locations	37
Outfall Tracing Guide – <i>new 2021</i>	45
Forms and Checklists.....	46
MS4 Educational Handouts.....	54
Door Hanger.....	56
MS4 PowerPoints and Presentations.....	63
City Ordinances	75
2022 MS4 Log Summary	76

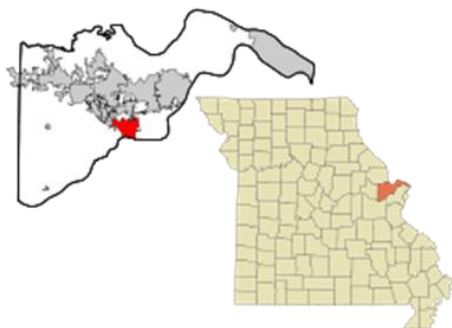
City of Weldon Spring

Weldon Spring was established in 1864 and took its name from a small spring of the same name near the original town site. Weldon Spring is located 27 miles west-northwest of St. Louis on the rolling hills of south-central St. Charles County.



Outfalls from the City go to both the Missouri River and the Mississippi River. These prominent rivers have significant physical influence on the City's geography. The Missouri River creates the southern boundary of the city, and the Mississippi River lies just a short distance to the north of the city. As a result, Weldon Spring possesses some of the highest ridges in St. Charles County.

The city prides itself in the rural roots and has worked hard to preserve the natural elements of the city. The City's Comprehensive Plan focuses on conservation of the City's natural resources, the preservation of area's rural character, the enhancement of existing land uses within the city and expanding residential, commercial, and high-tech areas of the city pursuant to this Plan.



The overall feel and image of the city is that of a suburban, low density residential area surrounded by open pastures and fields that give way to rolling fields and woods toward the Missouri River. containing wooded areas, open fields, steep ravines, and floodplains as well as several significant commercial and industrial areas.

The City of Weldon Spring is one of the smaller Cities in St. Charles County by land size and population ranking 6th. According to the United States Census Bureau, the city has a total area of 7.64 square miles, of which 7.51 square miles is land and 0.13 square miles is water.

Weldon Spring had an estimated population of 5,443 residents. There are currently an estimated 200 commercial and home-based businesses within the city, 35 percent of which are estimated to be storefront businesses and 65 percent of which are estimated to be home-based. There is a commercial component of the City along State Highway 94 and a high-tech component along Interstate 64 (I-64). The city has a very small industrial area along Route 94 near O'Fallon Road.

What's New in 2022?

Comprehensive Plan

During 2022 the City of Weldon Spring started the first full year utilizing the new Storm Water Management Plan.

After attending all the sessions and discussing with Sarah Wright of MoDNR, the city is utilizing the **Comprehensive Plan** for our permit.

The focus in 2022 was utilizing our new **Stormwater Management Plan** and making **adaptive changes** to assure the plan continues to improve and remains compliant with the new regulations.



Outfall Mapping

The City of Weldon Spring contracted with a consulting engineering company (St. Charles Engineering) to develop a map of all the outfalls in the City. The map was inclusive of many pipes and culvert ends that were very useful to track the stormwater system, but they were not all “outfalls” for the purpose of MS4 inspections. During 2021 this map and an excel spreadsheet continued to be refined to identify which pipe ends are truly “outfalls” and to determine which ones the city is responsible to inspect.

Unique to Weldon Spring is the number of privately maintained streets and storm sewer and detention basin improvements. Many of the streets and most of the detention/retention basins and lakes in the City of Weldon Spring are **privately owned and maintained**. An excel spreadsheet is utilized to determine which outfalls are maintained by the city for dry weather inspections. The map and spreadsheet are used during dry weather outfall inspections.

The City of Weldon Spring City Engineer attended the Outfall training provided by MoDNR during on November 9, 2022. **What was learned in the session was the City has been considering more pipe outfalls to be true “MS4 Outfalls”, mainly due to the large number of private detention basins, private streets, and private lands in the City.** During the next few years the City will work to update our inventory to reflect true “MS4 Outfalls” as part of our continual and adaptive management.

Outfall Tracing Spreadsheet

In the event of a spill or illicit discharge the city also developed an **outfall tracing guide**. This shows in a graphic form, what outfall each subdivision ultimately drains to. This also assists to determine high priority outfalls to inspect more frequently.

MS4 SWPPP

City of Weldon Spring

Outfall Tracing

This shows the main developments draining to each outfall.

Outfall	A	B	C	D	E	F	G	H	I	J	K	L
River	Mississippi Dardene Creek	Mississippi Dardene Creek	Mississippi Dardene Creek	Mississippi Dardene Creek	Mississippi Dardene Creek	Mississippi Dardene Creek	Missouri River	Missouri River	Missouri River	Missouri River	Missouri River	Missouri River
Tributary	Crooked Creek	Crooked Creek	Crooked Creek	Crooked Creek	Baltic Creek	Baltic Creek	Old Wolfrum Tracts (Walsh/Hawthorn/Moore)	Old Wolfrum Tracts (Walsh/Prov3 56/Tavalo)	Old Wolfrum Tracts (Kolb/Walsh) STRATHALBYN CLUB	Old Wolfrum Tracts (Walsh / Kolb)	Upper Whitmoor (SCCO-Austin Ridge)	SCCO-Austin Ridge
Tributary	Persimmon Wood Golf	Persimmon Woods Golf	kolb	Wrenwyck	Pitnam Hill Road	Veteran's Tribute Park	Old Wolfrum Tracts (Walsh/Hawthorn/Moore)	Old Wolfrum Tracts (Walsh/Prov3 56/Tavalo)	Old Wolfrum Tracts (Kolb/Walsh) STRATHALBYN CLUB	Old Wolfrum Tracts (Walsh / Kolb)	Upper Whitmoor (SCCO-Austin Ridge)	SCCO-Austin Ridge
		Faith Church		Lutheran Senior	Manors of Lucerne	Whitmoor	Bender					
		Trace Apartments		Westchester Farms	Renaissance Place	Roseberry Topping	FHSD		Whitmoor			
		Chapter One		Westerfield	Ehimann Farms	Crosshaven	Wycliff / Dutchman		Whitmoor			
		Osage Park		El Caballos	The Highlands		Camelot					
		FHSD		Butterfly Lane	Whitmoor							
		Fab Tech		Independence	St. John's Church							
		Walmart Industrial			Williamsburg on the Green							
		Christian Life Center			City Hall and Park							
		Plaza Motors			Rodelle Woods							
		Ameren			Camelot							
		Fire Department			Grey Oaks							
		Heartland Bank			Willow Lakes							
		Route 94										
		Centerpointe Hospital										
		Southbrook										
		Forest										
		QT										
		Hunters Green										

Residential
Commercial
Industrial
Institutional
Municipal / Parks
Agricultural / Wooded

General State Operating Permit
MOR04C070

2/9/2022

COVID 19 IMPACTS – 3rd Year

Return to more Normal Municipal Operations

The year 2022 saw municipal operations **slowly returning closer to normal** after challenges due to a worldwide pandemic. Like every state agency, the City of Weldon Spring, Missouri has experienced its share of challenges during the past year as public participation at events has been limited following national CDC recommendations. Like everyone else, we've learned from those challenges.

During 2022, while many employees and public were vaccinated and boosted, a new Omicron variant emerged. Testing kits were scarce in the first part of 2022 and many meetings remained virtual. This was a challenge, as a small city with part-time staff does not have the same technology as larger agencies.

Numerous annual events that have been part of our MS4 plan in previous years for Public Education and Outreach and Public Participation / Involvement evolved to more virus friendly activities in the first part of the year. Latter in 2022 it seemed that more operations were returning closer to pre-pandemic, although many major employers in the region remain – virtual.



The City was still holding virtual meetings and masking in the beginning of 2022. Meetings started to return to in-person later in 2023. Most of the contact with State agencies like MoDNR and SEMA remained virtual.



Keeping the environment and water clean is a top priority in Weldon Spring. During 2022, 10,000 pet waste disposal bags were purchased to keep dispensers stocked for use in the city.

The **Katy Trail State Park** is a state park that contains the Katy Trail, the country's longest recreational rail trail. It runs 240 miles, largely along the northern bank of the Missouri River, in the right-of-way of the former Missouri–Kansas–Texas Railroad. The trail runs parallel to the City border along the Missouri River in this mostly undeveloped riparian area along this great river.

Focus on the Environment

The natural setting and beauty of Weldon Spring is enhanced further by several very popular parks. The City logo sign stresses the importance of the rivers and natural setting.

The City is fortunate to have three unique parks to help enjoy the natural environment.

Weldon Spring City Hall and Park is uniquely part of an older estate home. Today the City Hall is located in the former residence surrounded by a small pond, playground and trails.

Veteran's Tribute Park is the newest St. Charles County Park located in the City. It features two



The Six Minimum Control Measures (MCM #1-6)

1. Public Education and Outreach

Distributing educational materials and performing outreach to inform citizens about the impacts polluted stormwater runoff discharges can have on water quality.

2. Public Participation/Involvement

Providing opportunities for citizens to participate in program development and implementation, including effectively publicizing public hearings and/or encouraging citizen representatives on a stormwater management panel.

3. Illicit Discharge Detection and Elimination

Developing and implementing a plan to detect and eliminate illicit discharges to the storm sewer system (includes developing a system map and informing the community about hazards associated with illegal discharges and improper disposal of waste).

4. Construction Site Runoff Control

Developing, implementing, and enforcing an erosion and sediment control program for construction activities that disturb 1 or more acres of land (controls could include silt fences and temporary stormwater detention ponds).

5. Post-Construction Runoff Control

Developing, implementing, and enforcing a program to address discharges of post-construction stormwater runoff from new development and redevelopment areas. Applicable controls could include preventative actions such as protecting sensitive areas (e.g., wetlands) or the use of structural BMPs such as grassed swales or porous pavement.

6. Pollution Prevention/Good Housekeeping

Developing and implementing a program with the goal of preventing or reducing pollutant runoff from municipal operations. The program must include municipal staff training on pollution prevention measures and techniques (e.g., regular street sweeping, reduction in the use of pesticides or street salt, or frequent catch-basin **cleaning**).

Acronyms & Definitions

MoDNR	Missouri Department of Natural Resources
BMP	Best Management Practice
EPA	Environmental Protection Agency
GIS	Geographic Information Systems
IDDE	Illicit Discharge Detection & Elimination
MCM	Minimum Control Measure
MEP	Maximum Extent Possible
MS4	Municipal Separate Storm Sewer System
NPDES	National Pollutant Discharge Elimination System
SWMP	Storm Water Management Program
SWPPP	Storm Water Pollution Prevention Plan
TMDL	Total Maximum Daily Load
USACE	United States Army Corps of Engineers
LEED	Leadership in Energy & Environmental Design

Best Management Practices (BMPs): “Schedules of activities, prohibitions of practices, maintenance procedures, and other management practices to prevent or reduce the pollution of waters of the state.” 10 CSR 20-6.200(1)(D)1 Includes structural items or non-structural practices or activities including schedules of activities, prohibitions of practices, maintenance procedures, structural controls, local ordinances, and other management practices to prevent or reduce the discharge of pollutants. BMPs also include treatment requirements, operating procedures, and practices to control runoff, spillage or leaks, waste disposal, or drainage from raw material storage areas. BMPs can be temporary or permanent. BMPs encompass both the enforceable terms and conditions of this permit as well as activities and practices selected by the permittee that will be undertaken to meet the permit requirements but that are not themselves enforceable.

Clear, specific, and measurable terms: “Such terms and conditions may include narrative, numeric, or other types of requirements (*e.g.*, implementation of specific tasks or best management practices (BMPs), BMP design requirements, performance requirements, adaptive management requirements, schedules for implementation and maintenance, and frequency of actions).” 40 CFR 122.34(a) Plain language to establish what is required by the MS4 permittee to achieve permit compliance.

Stormwater: “Storm water runoff, snowmelt runoff and surface runoff, and drainage.” 10 CSR 20-6.200(1)(D)31.

Illicit Discharge: “Any discharge to a municipal separate storm sewer that is not composed entirely of storm water, except discharges pursuant to a state operating permit, other than storm water discharge permits and discharges from firefighting activities.” 10 CSR 20-6.200(1)(D)7.

MS4: “A municipal separate storm sewer system” 10 CSR 20-6.200(1)(D)11.

“Municipal separate storm sewer means a conveyance or system of conveyances including roads and highways with drainage systems, municipal streets, catch basins, curbs, gutters, ditches, paved or unpaved channels, or storm drains designated and utilized for routing of storm water which—

- A. Does not include any waters of the state as defined in section 644.016, RSMo.
- B. Is owned and operated by the state, city, town, village, county, district, association, or other public body created by or pursuant to the laws of Missouri having jurisdiction over disposal of sewage, industrial waste, storm water, or other liquid wastes.
- C. Is not a part or portion of a combined sewer system;
- D. Is not a part of a publicly owned treatment works.” 10 CSR 20-6.200(1)(D)16.

Maximum Extent Practicable (MEP): An adaptive management approach whereby the permittee will implement management measures, including structural and non-structural BMPs. MEP is a permittee-specific determination guided by the following factors: community financial capability and the need for reasonable rate/funding increases, weighing program-wide requirements against site-specific MS4 improvements, MS4 impacts to receiving waters, local priorities, watershed and/or integrated planning, MS4 size, climate, implementation schedules, hydrology, topography, geology, and MS4 capacity to perform operation and maintenance.

Non-Structural Control: Pollution prevention practices that focus on management by limiting or eliminating pollutants before they end up in the stormwater. Non-structural controls may include but are not limited to; site and land use planning, vegetated filters, stream buffers, low impact development (LID), open space preservation, impervious cover restrictions.

Owner: “A person who owns and controls the use, operation, and maintenance of a separate storm sewer.” 10 CSR 20-6.200(1)(D)20 A State Department, City, town, village or other public entity is the “person.”

Permittee: Refers to the MS4 Operator, or holder of this general permit.

Structural Control: A pollution prevention practice that requires the construction, or use of a device, to capture or prevent pollution in stormwater runoff. Structural controls may include but are not limited to: extended detention basins, bio-retention, infiltration basins, stormwater wetlands, bio-swales, vegetative lined ditches, subsurface drains, permeable pavement or concrete, sand filter basins, stormwater planters, proprietary BMPs, storage tanks, and hydrodynamic separators.

Outfall: “A point source as defined by 10 CSR 20-2.010 at the point where a municipal separate storm sewer discharges and does not include open conveyances connecting two (2) municipal separate storm sewers, pipes, tunnels, or other conveyances which connect segments of waters of the state and are used to convey waters of the state.” 10 CSR 20-6.200(1)(D)18. An outfall is not where a stream or waters of the state leave the municipal boundary.

Stormwater Management Program: A comprehensive and documented program to manage the quality of discharges from the MS4.

Waters of the State: “All waters within the jurisdiction of this state, including all rivers, streams, lakes and other bodies of surface and subsurface water lying within or forming part of the boundaries of the state which are not entirely confined and located completely upon lands owned, leased or otherwise controlled by a single person or two or more persons jointly or as tenants in common.” 644.016(27) RSMo.

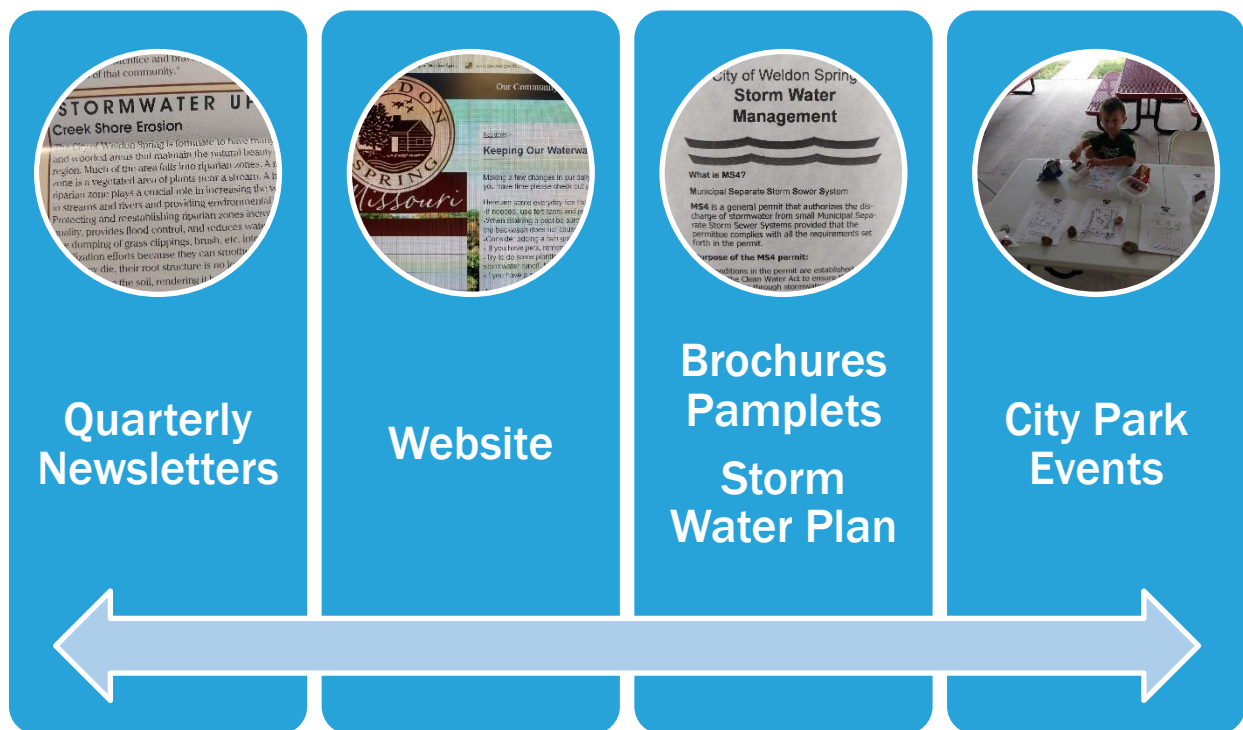
Roles and Responsibilities

Focus Area	City Staff	Contact Info.	Notes
Overall MS4 Plan	Bill Schnell, P.E. City Engineer Storm Water Manager	cityengineer@weldonspring.org	Developing Plan, coordinate staff roles, main City Contact for MS4.
MCM #1 Public Education And Outreach	Mitchell Jordan Community Relations Coordinator & Public Information Officer	mjordan@weldonspring.org	Includes MS4 Information in Newsletters and social media. Plans City Events that include MS4.
MCM #2 Public Participation and Involvement	Mitchell Jordan Community Relations Coordinator & Public Information Officer	mjordan@weldonspring.org	Plans Community Events such as Stream Team Cleanup, Annual Tree Planting, Kid's Fishing Tournament
MCM #3 Illicit Discharge Detection and Elimination	Bill Schnell, P.E. City Engineer & Storm Water Manager	cityengineer@weldonspring.org	Responsible for inspections, responding to calls, maintaining maps and plans.
MCM #4 Construction Site Runoff Control	Bill Schnell, P.E. City Engineer & Storm Water Manager	cityengineer@weldonspring.org	Responsible for overseeing land disturbance permits and assuring compliance.
MCM #5 Post-Construction Runoff Control	Bill Schnell, P.E. City Engineer & Storm Water Manager	cityengineer@weldonspring.org	Inspection of outfalls, detention basins. Responding to concerns.
MCM #6 Pollution Prevention and Good Housekeeping	Chris Harris Parks & Facilities Manager	charris@weldonspring.org	Routine facility inspections, keeping City Park grounds compliant with Plan

Public Education and Outreach (MCM#1)

Distributing educational materials and performing outreach to inform citizens about the impacts polluted stormwater runoff discharges can have on water quality.

The City of Weldon Spring focused our Public Education and Outreach in several different areas. The Storm Water Plan is starting point and a great educational tool in itself



The City of Weldon Spring provides MS4 related information to citizens and businesses. By utilizing the available public and governmental vehicles, such as our City Website, Facebook Page, and Twitter, the city can reach a wide audience by having the following measures:

- The city has a staff position of City Engineer / Storm Water Manager who will be responsible for developing public education and outreach on storm water impacts. The City Administrator will be responsible to delegate or contract out the City Engineer / Storm Water Manager's responsibilities when the position is vacant. The Community Relations Coordinator is responsible for developing newsletters, maintaining the website and any social media postings. The Community Relations Coordinator will provide information on distribution of newsletters and any metrics available for tracking of social media / website hits to determine utilization.
- At City Hall, educational brochures on a variety of MS4 topics will be available to the public. As the central community meeting location in the city, this is the most logical place to disseminate information. Brochures have been developed by the City of Weldon Spring on general MS4 information, pool and spa discharges, construction site erosion control, outfalls and a variety of other stormwater topics.
- The city has a dedicate storm water page on the municipal website. (www.weldonspring.org). A link to the current MS4 permit, the City's Stormwater management plan and the annual report can be found by navigating from the homepage to Departments/Community Development/Stormwater Management.
- The City newsletter established by Ordinance 97-06 will also contain information from the City Engineer / Storm Water Manager on storm water management, announcements of meeting and event times and places and sources for available information. Seasonal articles will appear in the quarterly newsletter for MS4 educational purposes.
- The City Engineer / Storm Water Manager may set up a booth at City events such as Senior Day, Fishing Derby other events at the city park. The booth will have information on the best storm water management practices readily available for the public, a map of the city showing the water shed drainage reaches and discharge points, public participation literature, and on occasion questionnaires for surveys. The booth will typically be manned by the City Engineer / Storm Water Manager. ***This has been curtailed due to Covid-19 during 2022 to limit exposure during Omicron Variant.***

BMP - Clear	BMP - Specific	BMP-Measurable
Provide Educational Stormwater Topics to City Residents & Businesses	City Newsletter sent to all addresses in City	During 2022, four (4) seasonal newsletters were sent to all residents and businesses. Approximately 2,200 mailed x 4 seasonal issues = 8,800 annual distribution. Each newsletter contained a focused stormwater topic for the season.
Provide Information to Pool owners on Stormwater Requirements	A City Educational Brochure of specific Stormwater Pool Requirements	Informational pamphlet on proper pool/spa water draining was attached to 100% of new pool permits. During 2022, 18 new pools were permitted.
Small Construction Site Erosion Control	A City Education Brochure on managing erosion at small construction sites.	Informational pamphlet BMP's on erosion control were attached to 100% of new permits including minor grading. During 2024, 10 housing units, 18 pools, 7 retaining walls, 21 decks were permitted and provided this information.
Utilize social media to provide stormwater information.	Put stormwater information on the City's Facebook postings.	The City Facebook page had an average reach of 1,386 people with 9 new followers. On November 7, 2022 the City posted a video on Storm Water Management and Water Quality created for St. Charles County, Mo.
Utilize the City website to communicate stormwater information.	Establish a Stormwater page on the City website and place the MS4 permit, SWMP and related information.	During 2022 there were 324 website views to the Community Development portion of the website that contains the Stormwater Information. An article on Pool & Spa proper discharge had 866 hits in January 2022.

Public Participation/Involvement (MCM#2)

Providing opportunities for citizens to participate in program development and implementation, including effectively publicizing public hearings and/or encouraging citizen representatives on a stormwater management panel.



The City of Weldon posted a public notice for a public meeting to occur on 3/4/2021 and the start of a public comment period (1/28/2021 to 3/4/2021) on the city website and in municipal communications.

Information related to the permit process, the City's MS4 Stormwater Management Plan and the annual report were available in person at City Hall and posted on the city website.

One public comment was received which stated they appreciated the public information received from the City on stormwater issues.

Unfortunately, Covid-19 has reduced public attendance at many meetings. With the pandemic (hopefully) coming to an end soon, the city is hopeful of a return to more normal attendance at in person events.

BMP - Clear	BMP - Specific	BMP-Measurable
Provide Opportunity for Residents to Contribute and Participate in Development of City Stormwater Management Plan by encouraging public input.	Provide Public Notice and a minimum 30 - day comment period to allow review and input into the City's MS4 Permit process and SWMP.	The city posted a Public Notice on the website and social media on 1/28/2021. The comment period runs until 3/4/2021. A copy of the Draft permit, the proposed SWMP outline and other information was posted online to review. Copies are available at City Hall on request.
Provide Opportunity for Residents to Contribute and Participate in Development of City Stormwater Management Plan by providing a public forum to contribute.	Hold a Public Hearing with a 30 - day advanced notice to allow public input into the permitting process and SWMP.	A Public Hearing in an open house format is scheduled for 3/4/2021 at the City Hall so the public can attend, review, participate and contribute to the development of our new SWMP and permit renewal.
Provide opportunities for residents and staff to learn more and participate in environmental events which impact stormwater.	Partner with local volunteers to improve water quality and improve the community.	On 4/24/2021 the city advertised and hosted an Earth Day Park Clean-up and Movie Night. A local boy scout troop and parents (20) cleaned up the park and removed invasive bush honeysuckle on approximately 1 acre to improve water quality. During the week of June 20, 2022 , 15 volunteers from St. Joseph's Catholic Church volunteered to help clean up the City Park by removing trash and planting to help improve the environment and reduce erosion.



*Figure 1*Volunteers from St. Joseph Catholic School Park Cleanup June 20-23, 2022



*Figure 2*Public Participation

Illicit Discharge Detection and Elimination (MCM#3)

Developing and implementing a plan to detect and eliminate illicit discharges to the storm sewer system (includes developing a system map and informing the community about hazards associated with illegal discharges and improper disposal of waste).



The City of Weldon Spring has ordinances in the City Municipal Code that prohibit illicit discharges that would enter the waters of the State.

The City Engineer /Storm Water Manager is responsible for the city's illicit discharge detection inspections. The City Code Enforcer also assist with inspections of outfalls and water quality features (detention / retention basins, etc.) Both jobs are part time positions in the city.

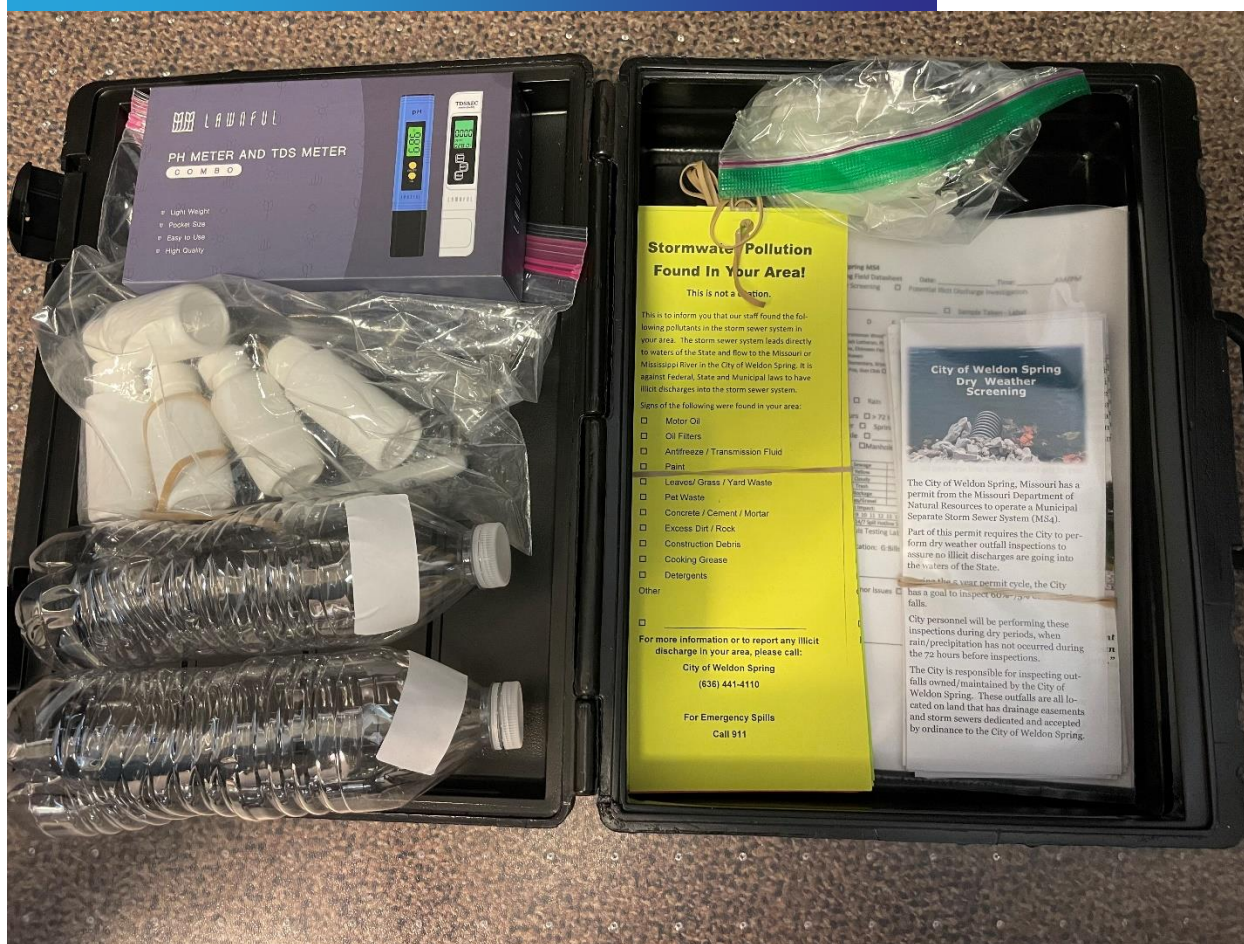
The city has a stormwater map developed by a consulting engineering company detailing all known storm water outfall locations in the City of Weldon Spring and the corresponding streams that lead to waters of the State. Each outfall from the city's border is labeled with a letter (A-J). Any outfall ultimately draining to this location is numbered with the corresponding letter to track discharges more easily. This map is continually updated with further developments within the city. The City Engineer has also developed a GIS based inventory of the stormwater system outfalls on Google Earth. This is a great tool to help locate and track outfalls in the city. A copy of the .kmz files can be supplied upon request. This allows anyone with a computer and access to Google Earth Pro to see the location of outfalls within the city. This can also be viewed at the City Engineer's computer in City Hall upon request.

The stormwater outfall map is used during the inspection program coordinated by the City Engineer / Storm Water Manager. Inspection forms developed by the City Engineer also include the map on the form itself. This greatly assist in finding the outfalls when performing inspections.



These inspections focus on detecting any illicit discharges into the waters of the State. Conducting inspections during dry seasons is key, since only stormwater should normally be flowing thru the stormwater system. Inspections are typically performed during the winter season, when dormant vegetation allows better access to many of the discharge points. The inspections will be made periodically throughout the permit cycle with the goal to meet or exceed the minimum inspection requirement.

Figure 3 New in 2022 Illicit Discharge Testing Kit



MS4 Illicit Discharge Test Kit 1 - New 2022!

Should any potential illicit discharge be identified or reported to the city, the City Engineer / Storm Water Manager will coordinate tracking and, if needed, sampling and testing of the pollutant to find the source and eliminate the violation. The Code Enforcer may also be utilized depending on the schedule and availability of these part time positions. Calls and emails typically are how citizens contact the City. The City Administrative Assistant or City Administrator would contact available city personnel to respond.

The city also responds to community input reporting any non-storm water discharges and illegal dumping viewed or witnessed by the public. The City Engineer / Storm Water Manager will follow up with inspections of areas reported by the public of potential violations.

Should violations of any of these standards occur, the City Engineer and/or Code Enforcer is designated to take action to correct the illicit discharge as specified in The Municipal Code City of Weldon Spring. As an example The Municipal Code, Title VII: Utilities, Chapter 705: Public and Private Sewers, Sections 705.060, 705.070, and 705.080 covers the protection from damage, the powers and authority of inspections, and the penalties that will be assessed should the provisions of the Code be violated. The offending parties must cease all infractions in a certain time period. If the actions do not cease, any person may be assessed a fine and become liable for any expense, loss, or damage that occurs because of the violation

Inspections are logged into a 3-ring binder Stormwater Documentation Log maintained at the City Engineer's desk. Each year starts a new binder to keep track for all of the MS4 documentation. An annual summary of the inspections is put together in an excel spreadsheet.

Illicit Discharge Investigations

During 2022, the city did receive six reports of potential illicit discharges.

Investigation 1 – May 28, 2022

On 4/28/2022 the City received a complaint about pool water discharge at 5759 Halifax Bend Court by the owner of 5671 Halifax Bend Court. The City investigated and found no water draining at the time – this was reported after the pool company back flushed the filter system. There was no signs of an illicit discharge impacting the environment in the creek behind the residence. St. Louis Pool and Spa was the contractor who backflushed the system. They were contacted and warned not to backflush without assuring the water was free of any chemicals, chlorine, etc. At this time of the years – pools are just opening up from winter and have not had chlorine added since the fall. The City provide the pool company and owner a brochure concerning pool water. Investigation was closed.

Investigation 2 – June 2, 2022

The City received a complaint that pool water was being discharged at 5759 Hayston Court on 6/2/2022. This property is located in the City of St. Peters, Missouri – not the City of Weldon Spring. As a result the City of Weldon Spring contracted the City of St. Peters and transferred this complaint to the proper MS4. Investigation was closed.

Investigation 3 – June 30, 2022

On 6/30/2022, a resident on Cedar Knoll Ct. called with an outfall concern. The end of the culvert and flared end section had collapsed. The City investigated and found erosion of the outfall to be the issue. St. Charles County Highway was contracted to replace the culvert end section and place rip rap around the outfall. The area was re-seeded / mulched to complete the restoration and to help prevent erosion.

Investigation 4 – October 18, 2022

On 10/18/2023 the resident of 5296 Roanoke Drive reported a large plastic tank was in her backyard along the creek. Upon investigation immediately after the report, it was found to be a sealed and intact water tank used to water plants. The owner was identified on the opposite side of Independence Road at 5250 Independence Road. Mr. Fedrico Velazquez uses the tank to water plants. The sealed tank was empty at the time of a large precipitation event and floated downstream – under Independence Road. After identifying the tank, Mr. Velazquez retrieved the tank back to his property and will secure the tank away from the creek in the future. Investigation was closed.

Investigation 5 - November 8, 2022

On 11/8/2022 the city received a phone complaint that a resident had leaves by the storm drain and was concerned they were placing the leaves in the curb inlet. The City investigated the same morning and knocked on the door of the residence at 5781 Westchester Farm Drive. The resident had recently moved into the area and is a local/national recognized radio personality for KTRS, Mcgraw Millhaven. Mr. Millhaven showed the leaves simply blew across the street into the cul-de-sac and were not placed by the inlet. He was in the process of mulching/cleaning his own yard – but didn't even have trees in his yard. The leaves were since removed. This became a discussion item on his radio show the next day – discussing how leaves can not be thrown into the storm water system. Investigation was closed.

Investigation 6 – December 12, 2022

On 12/12/2022 the resident at 5789 Westchester Farm Drive called and self-reported an incident. Cynthia Jokerst Mann said her husband (David Mann) and her employed a contractor to replace their front porch. The contractor has tried multiple times replacing the concrete and this was the 2nd attempt today. She noticed the workers around the curb inlet in front of her house and walked out to see what they were doing. She was concerned they had put concrete from the truck into the inlet. The workers denied doing this – but her visual inspection showed signs of concrete/cement – so she called the City. Upon inspection, it was apparent that cement was smeared on the curb inlet lid and surroundings. When removing the lid to the inlet – there was a small pile of fresh poured concrete and other chunks of concrete tossed into the inlet. A citation was issued to Lakeside Exteriors for violating City Ordinance 240.080. The owner was very cooperative and did not know what his workers had done. He said every employee was fired and he would send a crew to remove any debris and correct the situation. The concrete was already set up and easy to remove since it did not bond. There was only a stain in the invert of the culvert to the next inlet – with no signs it reached the detention area or waters of the State. The contractor will be fined up to \$100 per the City Code. Investigation was closed.

Dry Weather Screenings

The City conducted dry weather screenings on twelve separate dates in 2022. Some of these inspections are ideal to perform during the winter when vegetation and insects (ticks, chiggers, etc.) allow better access to the outfalls.

No illicit discharges were detected during routine inspections during 2022. The results of the inspections are shown in the documentation log.

When water is present in the outfalls, the City now has the ability to check the temperature and pH of the water. This is new in 2022 and added as part of our adaptive management. Outfall inspection sheets have also been revised to show this information.

During outfall training with Sarah Wright, the City learned we have less true “outfalls” to waters of the State – than outfalls as identified on the City Outfall Map. **The City will work as time allows in the next phase of the permit cycle to utilize continual and adaptive change – to identify the true “outfalls” in the City.**

Waters of the State MO 655.016(27)

"Waters of the state", all waters within the jurisdiction of this state, including all rivers, streams, lakes and other bodies of surface and subsurface water lying within or forming a part of the boundaries of the state which are not entirely confined and located completely upon lands owned, leased or otherwise controlled by a single person or by two or more persons jointly or as tenants in common.

BMP - Clear	BMP - Specific	BMP-Measurable
Have a map that can be utilized to determine discharge locations and the City's stormwater system.	In 2022, the city continued to improve a map of City stormwater discharge locations by developing an Excel spreadsheet with more detail.	A hard copy of the city stormwater map is located at the City Hall. An electronic version is kept on the city server.
Be able to track any Illicit discharge by knowing how the stormwater system flows in the City.	Have a set of as built plans readily available in City Hall of the storm water systems.	A pdf copy of all subdivision plans is kept on the city server. The City Engineer and other staff can access these plans when needed. A new outfall tracing spreadsheet was developed in 2021 to help track any (future) illicit discharges.
Utilize the public to observe and report any concerns or potential illicit discharges in the City.	Investigate 100% of all public reports/complaints concerning the storm water system.	During 2022, the City responded to six (6) reports of illicit discharge or outfall concerns. 100% were investigated and resolved. See Activity Log.
The City shall monitor outfall locations to assure no illicit discharges.	Outfalls from the City should have dry weather screenings at a minimum, once per permit cycle.	>The City is on pace to inspect > 70% of the outfalls during the permit period and inspected outfalls on 12 days in 2022. No illicit discharges were detected during dry weather screening in 2022. The City is working as part of adaptive management to refine the list of "true" outfalls per Sarah Wright's - MoDNR's outfall class.

The City shall identify and monitor high priority areas.	High priority locations should be screened at minimum, annually.	During 2021, the city developed a spreadsheet identifying higher priority outfall areas in the city. This identified one outfall had the most concentrated industrial base so will be inspected annually.
--	--	---

Construction Site Runoff Control (MCM#4)

Developing, implementing, and enforcing an erosion and sediment control program for construction activities that disturb 1 or more acres of land (controls could include silt fences and temporary stormwater detention ponds).



The City Engineer / Stormwater Manager is responsible for making sure the City Sediment and Erosion Control Regulations are adhered to as per The Municipal Code City of Weldon Spring.

Due to the smaller size and generally more stringent development requirements, there are typically only a handful of active land disturbance sites in the city limits greater than one acre that require a permit from MoDNR.

All disturbed land areas must adhere to the Sediment and Erosion Control Regulations in the Municipal Code of Weldon Spring. All Sediment and Erosion Control plans must be incorporated into the site development plans, or submitted as a separate plan for review by the City Engineer.

The City Engineer / Stormwater Manager reviews all development plans with a checklist to verify compliance with the needs to protect the waters of the State from sediment discharge from the disturbance of land.

The City requires the permit holder to provide weekly and post event inspections, utilizing a City supplied form of each MoDNR land disturbance site. The City requires the personnel performing the inspection to have been trained and certified. That is new in 2022. The EPA provides Construction Inspection Training Course for free. The City Engineer requires the developer to provide a certificate for the on-site inspector. Other training could also be accepted if it provides similar curriculum.

EPA Course Link:

<https://www.epa.gov/npdes/construction-inspection-training-course>



EPA Training Certificate for Construction Site Inspection

The City Engineer / Stormwater Manager typically conducts routine inspections throughout the duration of development of land to monitor the compliance with the approved plans and ordinances. With a limited number of developments, this is typically performed one day a month and documented. If any deficiencies are discovered, the City Engineer / Stormwater Manager will typically send an email the same day to the permit holder. Compliance has been very good within the city.

Escrows, letters of credit or financial guarantees are held by the City to give the resources to act to protect the waters of the State if violations persist without proper action by the developer.

The City Engineer is authorized by ordinance to address the issues by inspection and follow up violations are found during inspections. To that end if violations are found, the City Engineer shall issue a written order directing that such construction activities and development be stopped immediately, and the violations corrected. If the violations persist the City Engineer shall serve that written order upon any person, firm, corporation or business engaged in such construction activities and development at the site that is the subject of the violation. The performance guarantee proceeds shall be used by the City to complete the planned sediment and erosion control practices if necessary.

During 2021, the City Engineer has been working with the permit holder to terminate their permits with MoDNR on a timely basis once acceptable growth has been established. The city holds escrows or a letter of credit until the MoDNR permit is terminated. There are two older inactive permits (Bender site and Blueridge Terrace), where the City is also working with the owners to determine the future of the property. These permit holders have been in contact with MoDNR St. Louis Office and have been told the permits are not active. (see email documentation) All permits expire on 2/7/2022.

The number of, or more desirably the lack of incidents concerning problem construction site storm water runoff will determine the success of this control minimum or a need for future adaptive change improvements to the program.

BMP - Clear	BMP - Specific	BMP-Measurable
Assure new construction in the city addresses all storm water requirements.	Utilize a checklist during plan review.	The city developed a new checklist for reviewing plan in 2020, it includes reviewing storm water and erosion control features. 100% of plans were reviewed utilizing the new checklist in 2022.
Monitor land disturbance permits =/> one acre for compliance.	Require active land disturbance permits to submit their weekly and post event erosion inspection reports to the city.	During the beginning of 2022, three (3) land disturbance permits were terminated. All were inactive at the start of year and in the process of termination. <u>Terminated Permits - 2022</u> <i>City Park</i> <i>MORA 15927 on 12/16/2021</i> <i>Ehlmann Farms - Inactive</i> <i>MORA 13363 on 2/7/2022</i> <i>30 Dutchman</i>

		<p><i>MORA 16170 on 1/18/2022</i></p> <p><u>New Permits -for 2023</u> New Perspective - Siedentop MORA22138 on 7-22-2022 Scrubbles - Wolfrum MORA23055 on 11-30-2022</p>
Monitor Land disturbance permits =/> 1 acre for compliance.	Perform spot inspections of active land disturbance permits to assure compliance and no illicit discharges.	The City Engineer or Code Enforcer visits active land disturbance permits, takes photos, and reviews the sites for compliance. 100% of the active permit sites were inspected 4X year, or more frequently if needed. Photos and notes are recorded and maintained at the City Hall.

Post-Construction Runoff Control (MCM#5)

Developing, implementing, and enforcing a program to address discharges of post-construction stormwater runoff from new development and redevelopment areas. Applicable controls could include preventative actions such as protecting sensitive areas (e.g., wetlands) or the use of structural BMPs such as grassed swales or porous pavement.



The City of Weldon Spring requires all new development to adhere to The Municipal Code City of Weldon Spring regarding storm water management. In general, improvements are required to comply with the St. Charles County and Metropolitan St. Louis Sewer District construction standards and specifications for design and construction of storm sewer structures, storm pipe, open channel storm water drainage, storm water detention facility design, construction details, and hydraulics to determine storm water design requirements. Detention is generally required if post construction runoff is increased >2cfs, following standards from St. Charles County.

The city utilizes a checklist site plan review process that requires the implementation of post-construction runoff controls. The city encourages developers to utilizing the **Missouri Guide to Green Infrastructure**, which can be found on the MoDNR website. The current City ordinances require landscaping within parking areas and establishment of vegetation on the site to adequately protect the soil from erosion and runoff in the post construction years.

The City Engineer is responsible for the review and approval of site development construction plans. A checklist is utilized when reviewing plans. Financial guarantees are required by developers help assure compliance with permits and ordinances.

The City Comprehensive Plan has language that encourages development to provide proper buffer along open channels, provide landscaped grass strips that promote best management practices to recharge groundwater, reducing impervious areas using of grassed swales to carry storm water, when possible, creation of wet ponds, use of bio-retention basins on land being developed, and creating rain gardens. In the areas along the Missouri River, the Comprehensive Plan encourages creating overlay districts to cluster home sites on the upland areas and to leave streams open. The purpose of these overlay districts is to promote conservation of woodlands, hydraulic habitats, and to preserve aquatic corridors.

The city provides timely information on MS4 topics in the city newsletter, on the city web site, and with pamphlets made available to developers and the public.

The city has each ordinance listed online at <https://ecode360.com/WE3474>. The Code Enforcer makes routine property inspections into assure City ordinances are being followed.

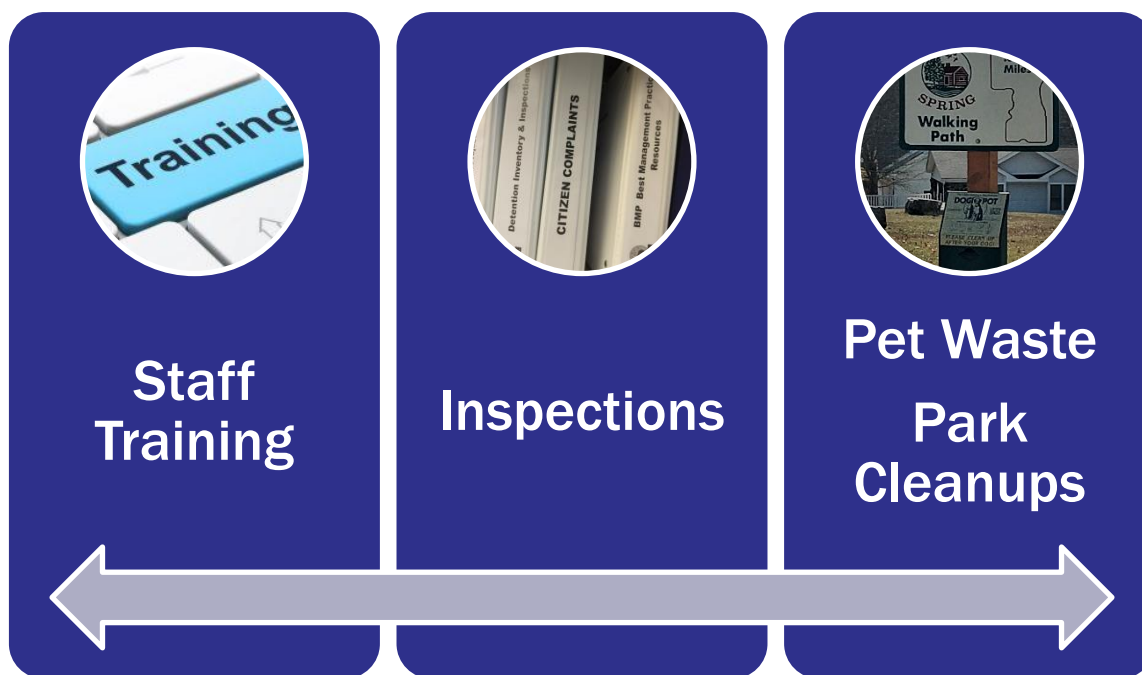
The success of this control measure will be determined by tracking the number of non-compliant properties.

During 2022, there were no properties found to be in non-compliance with City ordinances.

BMP - Clear	BMP - Specific	BMP-Measurable
Assure Stormwater BMPs function properly after construction,	Inspect basins and BMPs once every permit cycle. Get corrective action on any BMP that needs maintenance.	>80% of basins in City have been inspected during the current permit cycle. .
Utilize the public as eyes and ears of the community to report any suspected violations, illicit discharges or maintenance needed on the City Storm Water system.	Investigate and act on any public inquiries, complaints, reports involving storm water.	One (1) concern was reported in Westchester Farm. The outfall structures appeared to have been modified to make the holes larger. The City meet with the HOA representatives in the field and all agreed someone had sledge hammered larger openings in the outfall structures. The HOA agreed to hire a contractor to restore the outfall structures to the plan dimensions. This was accomplished in Fall 2022. The City will check the restoration in 2023.
Have a mechanism to maintain water quality BMPs to assure long term compliance.	The city will have ordinances in place to address maintenance of post construction runoff.	The city has ordinances in place to require owners to maintain everything to the approved site plan. City staff and Code Enforcer are empowered to get compliance on any deficiency. The public has been 100% responsive to City requests to comply with ordinances. In 2022, the City started new developments signing a Maintenance Agreement for BMP's. This is being utilized on new developments.

Pollution Prevention/Good Housekeeping (MCM#6)

Developing and implementing a program with the goal of preventing or reducing pollutant runoff from municipal operations. The program must include municipal staff training on pollution prevention measures and techniques (e.g., regular street sweeping, reduction in the use of pesticides or street salt, or frequent catch-basin cleaning).



The City of Weldon Spring has one municipal facility. Our park areas including the 18 acres of park ground that surrounds City Hall. The municipal complex has one older residence that functions as the City Hall, one metal building for Parks staff and equipment, two baseball fields, and one small < 1 acre pond. There is a system of asphalt trails in the park that was expanded in 2021.



MS4 Staff Training held December 29, 2022

Due to the small size of municipal operations, the city has only one full time park employee and one part-time park employee. The park staff concentrates on lawn and general property maintenance at the City Hall complex.

The current City Staff (8 members) attended a general MS4 Training on December 29, 2022. In addition to the required park staff, much of the administrative city staff also attended to learn about MS4 topics. New in 2022, those attending took a test to capture their understanding of MS4 requirements. A copy of the training PowerPoint and test

results are in the 2022 MS4 Documentation Log.

The city only has one pickup truck, two mowers, one ATV and two electric golf carts. There is no fueling stations or bulk storage at the city. The city vehicle(s) are fueled and washed at commercial locations.

The city does have a basic SWPPP for the municipal complex and the City Parks Manager does monthly inspections of the facilities.

The City Park has one small pond, protected from sediment by a fore bay.

The city has pet waste bags strategically place around the park and along trails in the city to keep contaminants out of the storm water system and park pond. During 2021, the city park staff placed 2,500 bags in these dispensers, with an average of over 200 pet waste bags per month were utilized by park and trail users to reduce pet waste into the stormwater system.

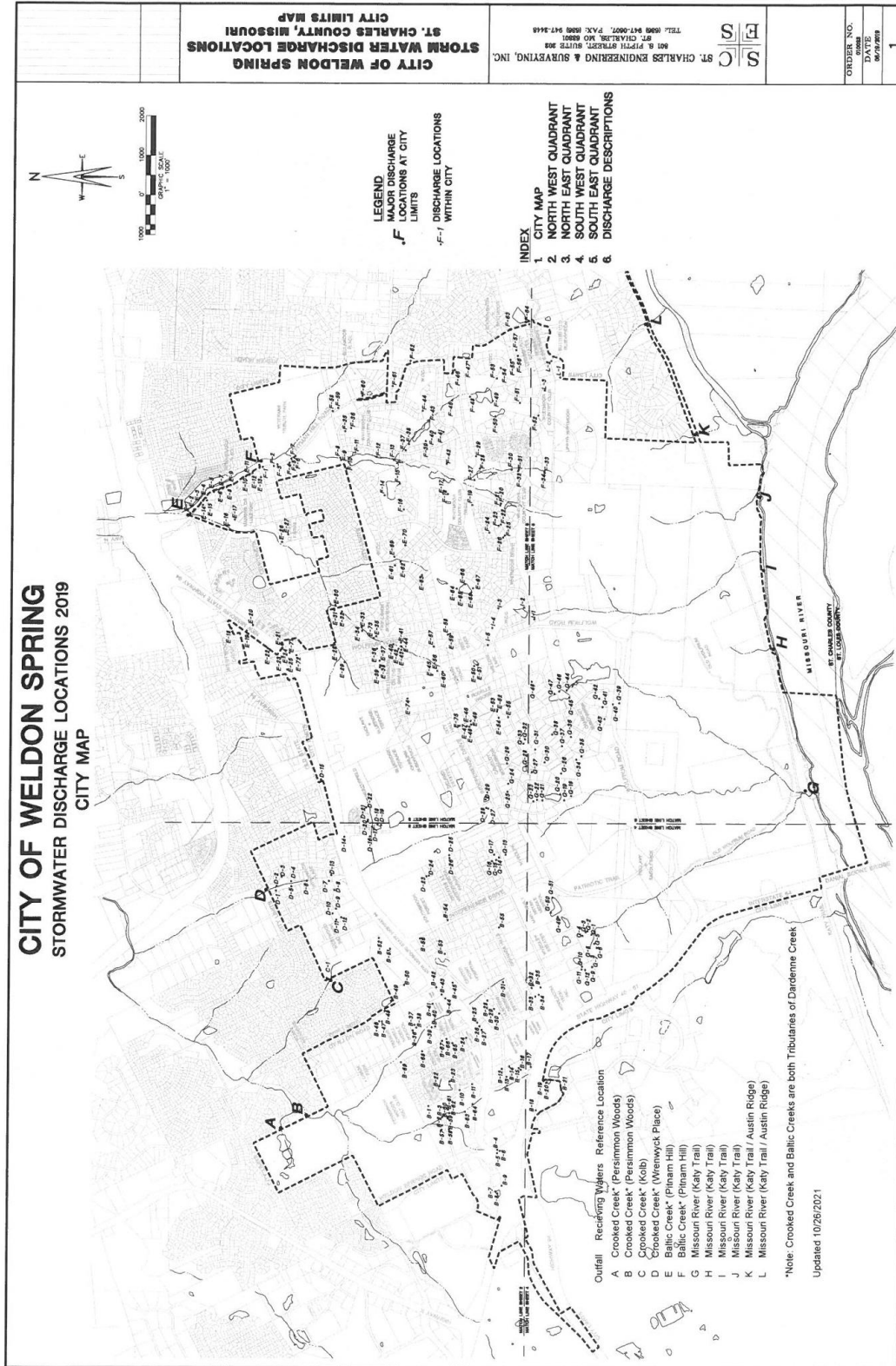
A rain garden has been placed adjacent to the Parks structure and is maintained by City Staff.

During 2021, a local boy scout troop (BSA) volunteered to clean up the 18-acre City Park and removed an invasive species, bush honeysuckle, on a ½ acre site within the park to help improve the environment and water quality.

The city relies on St. Charles County for all other City related pavement and storm sewer maintenance.

BMP - Clear	BMP - Specific	BMP-Measurable
Train City Staff on Stormwater MS4 Topics	Developed a PowerPoint Presentation and Training on 6 Minimum Control Measures and MS4 Plan.	During 2022, the city held MS4 training on 12/29/2022 in person for 100% of field staff.
Review City Owned Facilities to assure adherence to Stormwater Management Best Practices	Developed a Checklist Specific to the City Hall and Park Grounds.	A new report was developed in 2020. This report is now being utilized bi-monthly by the Parks department. The City did transition to a new Park Superintendent, so no reporting was done during the transition. The City does not store any material requiring a SWPPP plan – but does this for a BMP.
Reduce pet waste from entering stormwater system	The city has provided Pet Waste Disposal bags within the City Park and at several locations in the City along shared use paths.	200 bags+/- were restocked into 4 sites (1 @ City Park, 3 along City Shared use paths) every 2 weeks. A total of 2,500+ bags were used in 2022. 10,000 new bags purchased for restocking dispensers.
Remove excess solids on City Owned Curbed Streets	Schedule Street Sweeping with St. Charles County Highway when needed.	The city had curbed roads swept by St. Charles County Highway by work order when solid debris are noticeable. This was performed in Fall 2022.

Stormwater Discharge Locations



2022 Annual MS4 Report - February 2023

Main Outfall	Outfall No.	Discharges to	Subdivision / Location	City Owned or Dedicated Outfall?	Owner / Maintenance Responsibility	Notes
A		Tributary to Crooked Creek	Persimmon Woods		Persimmon Woods	
B		Tributary to Crooked Creek	Persimmon Woods		Persimmon Woods	
B	1	Tributary to Crooked Creek	Chapter One	1		EP 17 from Hemingway Lane
B	2	Tributary to Crooked Creek	Technology - Siedentop	1		1-1 and 1-2 Outfalls at headwall / cross road pipe
B	3	Tributary to Crooked Creek	Technology - Siedentop	1		4-1 Outfall at headwall / cross road pipe
B	4	Tributary to Crooked Creek	State of Missouri - MSHP C		State of Missouri	FE4
B	5	Tributary to Crooked Creek	State of Missouri - MSHP C		State of Missouri	FE1
B	6	Tributary to Crooked Creek	State of Missouri - MSHP C		State of Missouri	FE14
B	7	Tributary to Crooked Creek	Plaza Motors		ASBURY ST LOUIS M LLC	FES20
B	8	Tributary to Crooked Creek	Plaza Motors		ASBURY ST LOUIS M LLC	FES11
B	9	Tributary to Crooked Creek	Plaza Motors		ASBURY ST LOUIS M LLC	FES8
B	10	Tributary to Crooked Creek	Chapter One	1	City of Weldon Spring	FES12
B	11	Tributary to Crooked Creek	Chapter One	1	City of Weldon Spring	FES14
B	12	Tributary to Crooked Creek	Lot 5 Weldon Spring Center		WELDON CENTRE LLC	FE100
B	13	Tributary to Crooked Creek	Missouri Business Park		Missouri Business Park	FE22
B	14	Tributary to Crooked Creek	Missouri Business Park		Missouri Business Park	FE24
B	15	Tributary to Crooked Creek	Missouri Business Park		Missouri Business Park	FE5
B	16	Tributary to Crooked Creek	Missouri Business Park		Missouri Business Park	FE1
B	17	Tributary to Crooked Creek	Missouri Business Park		Missouri Business Park	FE20
B	18	Tributary to Crooked Creek	NOVUS		REALTY INCOME PROPERTIES 7 LLC	FE13
B	19	Tributary to Crooked Creek	NOVUS		REALTY INCOME PROPERTIES 7 LLC	FE1
B	20	Tributary to Crooked Creek	NOVUS		REALTY INCOME PROPERTIES 7 LLC	FE3
B	21	Tributary to Crooked Creek	NOVUS		REALTY INCOME PROPERTIES 7 LLC	FE11
B	22	Tributary to Crooked Creek	Chapter One	1	City of Weldon Spring	EP23 Outfall into lake - pipe replaced in 2020
B	23	Tributary to Crooked Creek	Chapter One		Chapter One HOA	EP1
B	24	Tributary to Crooked Creek	Midland Bank		Midland Bank	FE1
B	25	Tributary to Crooked Creek	SPIRIT ENERGY LLC		State of Missouri	FE100 on MoDOT R/W
B	26	Tributary to Crooked Creek	SPIRIT ENERGY LLC		State of Missouri	FE1 on MoDOT R/W
B	27	Tributary to Crooked Creek	SPIRIT ENERGY LLC		State of Missouri	FE Un-named on MoDOT R/W
B	28	Tributary to Crooked Creek	Hunters Green Estates	1	City of Weldon Spring	Outfall to Creek from Mergenthal Ct FE 100
B	29	Tributary to Crooked Creek	Hunters Green Estates		Hunters Green HOA	Outfall to Creek from Detention Basin FE 103
B	30	Tributary to Crooked Creek	Hunters Green Estates		Hunters Green HOA	Discharge into Detention Basin FE 105
B	31	Tributary to Crooked Creek	Hunters Green Estates		Hunters Green HOA	Discharge Outfall from Area Inlets to creek FE 113
B	32	Tributary to Crooked Creek	WORLDCOM TECHNOLOGIES		Worldcom Technologies, Inc.	Outfall to Property Line from Detention FE 40
B	33	Tributary to Crooked Creek	WORLDCOM TECHNOLOGIES		Worldcom Technologies, Inc.	Parking lot discharge into Detention EP 01
B	34	Tributary to Crooked Creek	WORLDCOM TECHNOLOGIES		Worldcom Technologies, Inc.	Parking lot discharge into Detention EP 13
B	35	Tributary to Crooked Creek	WORLDCOM TECHNOLOGIES		Worldcom Technologies, Inc.	Parking lot discharge into Detention EP 15
B	36	Tributary to Crooked Creek	Francis Howell School District		FRANCIS HOWELL R III SCHOOL DISTRICT	FE - Unnamed from pond
B	37	Tributary to Crooked Creek	Messiah Lutheran		Messiah Lutheran	FES 102
B	38	Tributary to Crooked Creek	Messiah Lutheran		Messiah Lutheran	FES 100
B	39	Tributary to Crooked Creek	Huber Commercial		Huber Park HOA	FE 6
B	40	Tributary to Crooked Creek	Huber Commercial		Huber Park HOA	FE 1
B	41	Tributary to Crooked Creek	Messiah Lutheran		Messiah Lutheran	FES 107
B	42	Tributary to Crooked Creek	QT #0645		QT #0645	FE - Unnamed
B	43	Tributary to Crooked Creek	QT #0645		QT #0645	FES 3-1
B	44	Tributary to Crooked Creek	Messiah Lutheran		Messiah Lutheran	EP - Unnamed
B	45	Tributary to Crooked Creek	BLANCHETTE REAL ESTATE LLC		BLANCHETTE REAL ESTATE LLC	EP - Unnamed CenterPoint Hospital
B	46	Tributary to Crooked Creek	Francis Howell School District		Francis Howell School District	EP 1 Discharge in Creek from Detention
B	47	Tributary to Crooked Creek	Francis Howell School District		Francis Howell School District	FES 4

2022 Annual MS4 Report - February 2023

B	48	Tributary to Crooked Creek	Francis Howell School District		Francis Howell School District	FES 11
B	49	Tributary to Crooked Creek	RODERICK REAL ESTATE LLC		RODERICK REAL ESTATE LLC	EP - Unnamed
B	50	Tributary to Crooked Creek	Westwood Center		Westwood Center	FE 100
B	51	Tributary to Crooked Creek	Kolb Family Trust		Kolb Family Trust	FE 1
B	52	Tributary to Crooked Creek	Kolb Family Trust		Kolb Family Trust	FE 3
B	53	Tributary to Crooked Creek	Southbrook Forest	1	City of Weldon Spring	FE 1
B	54	Tributary to Crooked Creek	Westchester Farm Addition		Westchester Farm Addition	FES 1 Drainage in backyards
B	55	Tributary to Crooked Creek	Grenada Hills (misabeled Westchester Farm)		Granada Hills HOA	Note - GRANADA HILLS (NOT Westester)
B	56	Tributary to Crooked Creek	Westchester Farm Phase Three		Westchester Farm Phase Three	EP - Unnamed
B	57	Tributary to Crooked Creek	TRACE APARTMENTS LLC		TRACE APARTMENTS LLC	FES 50
B	58	Tributary to Crooked Creek	TRACE APARTMENTS LLC		TRACE APARTMENTS LLC	FES 1
B	59	Tributary to Crooked Creek	TRACE APARTMENTS LLC		TRACE APARTMENTS LLC	FES 37
B	60	Tributary to Crooked Creek	TRACE APARTMENTS LLC		TRACE APARTMENTS LLC	FES 39
B	61	Tributary to Crooked Creek	TRACE APARTMENTS LLC		TRACE APARTMENTS LLC	FES 48
B	62	Tributary to Crooked Creek	TRACE APARTMENTS LLC		TRACE APARTMENTS LLC	FES 41
B	63	Tributary to Crooked Creek	TRACE APARTMENTS LLC		TRACE APARTMENTS LLC	Box Culvert 33
B	64	Tributary to Crooked Creek	TRACE APARTMENTS LLC		TRACE APARTMENTS LLC	FES 24
B	65	Tributary to Crooked Creek	Cedar Glen	1	Cedar Glen	FE 20 Cedar Glen Court
B	66	Tributary to Crooked Creek	Cedar Glen	1	Cedar Glen	FE 15 Cedar Crest Court
B	67	Tributary to Crooked Creek	Cedar Glen	1	Cedar Glen	FE 26 Cedar Glen Court (wrong location on map)
B	68	Tributary to Crooked Creek	Cedar Glen	1	Cedar Glen	FE 10 Cedar Knoll
B	69	Tributary to Crooked Creek	Cedar Glen	1	Cedar Glen	FE 1 Cedar Ridge Court
C	1	Tributary to Crooked Creek	Kolb		2008 KOLB FAMILY TRUST THE	FE 5
D		Tributary to Crooked Creek	Wrenwyck		Wrenwyck HOA	
D	1	Tributary to Crooked Creek	Wrenwyck		Wrenwyck HOA	FE 201 Outfall from Detention /Hennsely Cir Ct.
D	2	Tributary to Crooked Creek	Wrenwyck		Wrenwyck HOA	FE 212 Detention MH / Hensley Cir
D	3	Tributary to Crooked Creek	Wrenwyck		Wrenwyck HOA	FE 220 Outfall into Detention Basin / Hensley Cir
D	4	Tributary to Crooked Creek	Wrenwyck		Wrenwyck HOA	FE 248 Outfall into Detention Basin / Dunbarton
D	5	Tributary to Crooked Creek	Wrenwyck		Wrenwyck HOA	FE 239 Outfall into Creek from Wrenwyck Place
D	6	Tributary to Crooked Creek	Wrenwyck		Wrenwyck HOA	Cross Road Box Culvert / Wrenwyck Place
D	7	Tributary to Crooked Creek	Wrenwyck	1	Wrenwyck HOA	FE 276 / Charing Cross Court
D	8	Tributary to Crooked Creek	Wrenwyck	1	Wrenwyck HOA	FE 300 / Halifax Bend
D	9	Tributary to Crooked Creek	Westwood Industrial		Westwood Industrial Park	Outfall from Westwood Industrial Detention/ FE 1
D	10	Tributary to Crooked Creek	Westwood Industrial		Westwood Industrial Park	Westwood Industrial Outfall Structure OS2
D	11	Tributary to Crooked Creek	Westwood Industrial		Westwood Industrial Park	FE 22 into Westwood Detention Basin
D	12	Tributary to Crooked Creek	Westwood Industrial		Westwood Industrial Park	FE 3 into Westwood Detention Basin
D	13	Tributary to Crooked Creek	Wrenwyck	1	City of Weldon Spring	FE 291 Outfall from Dunbarton to creek
D	14	Tributary to Crooked Creek	94 - Breeze Park		MoDOT	Westerfield FE 223
D	15	Tributary to Crooked Creek	94		MoDOT	South 94 Storage FE Unnamed from site detention
D	16	Tributary to Crooked Creek	Westerfield / Breeze Park		Lutheran Senior Services	Westerfield Phase 1 FE 216
D	17	Tributary to Crooked Creek	Gables at Breeze Park		Lutheran Senior Services	FE - Unnamed
D	18	Tributary to Crooked Creek	Gables at Breeze Park		Lutheran Senior Services	FE 39 Discharge into wet retention pond
D	19	Tributary to Crooked Creek	Gables at Breeze Park		Lutheran Senior Services	FE 42 Discharge into wet retention pond
D	20	Tributary to Crooked Creek	Breeze Park		Lutheran Senior Services	EP 201 Outfall into creek from Westerfield Drive
D	21	Tributary to Crooked Creek	Breeze Park		Lutheran Senior Services	FE 220 Cross road pipe under Westerfield Drive
D	22	Tributary to Crooked Creek	Breeze Park		Lutheran Senior Services	FE 212
D	23	Tributary to Crooked Creek	Westchester		ESTATES AT WESTCHESTER FARM HOMEOWNERS ASSOC	FE 36 Discharge from Detention Basin to Creek
D	24	Tributary to Crooked Creek	Westchester		ESTATES AT WESTCHESTER FARM HOMEOWNERS ASSOC	FE 38 Discharge Westchester M. bubble to detention
D	25	Tributary to Crooked Creek	Westchester		ESTATES AT WESTCHESTER FARM HOMEOWNERS ASSOC	FE 1 Outfall from detention to creek
D	26	Tributary to Crooked Creek	Westchester		ESTATES AT WESTCHESTER FARM HOMEOWNERS ASSOC	FE 3 Discharge from Westchester M. Drive to detention

2022 Annual MS4 Report - February 2023

D	27	Tributary to Crooked Creek	Independence		ST JOHN SCOTT E*ST JOHN JAMIE R	Discharge Outfall from Independence
D	28	Tributary to Crooked Creek	Independence		PETERSON WILLIAM N*PETERSON KARI S	Discharge Outfall from Detention
D	29	Tributary to Crooked Creek	Independence		SHELLERT DAVID J*SHELLERT CYNTHIA D	Independence Rd Outfall into Private Detention Pond
E	1	Tributary to Dardenne Cr.	Pitman Hill (County Portion)		St. Charles County Highway	FE12 Pitman Hill SCCO
E	2	Tributary to Dardenne Cr.	Pitman Hill (County Portion)		St. Charles County Highway	FE 15 Pitman SCCO
E	3	Tributary to Dardenne Cr.	Pitman Hill (County Portion)		St. Charles County Highway	FE 21 Pitman SCCO
E	4	Tributary to Dardenne Cr.	Pitman Hill (County Portion)		St. Charles County Highway	FE 29 Pitman SCCO
E	5	Tributary to Dardenne Cr.	Pitman Hill (County Portion)		St. Charles County Highway	FE 31 Pitman SCCO
E	6	Tributary to Dardenne Cr.	Pitman Hill (County Portion)		St. Charles County Highway	FE 33 Pitman SCCO
E	7	Tributary to Dardenne Cr.	Pitman Hill (County Portion)		St. Charles County Highway	FE 35 Pitman SCCO
E	8	Tributary to Dardenne Cr.	Pitman Hill (County Portion)		St. Charles County Highway	FE 37 Pitman SCCO
E	9	Tributary to Dardenne Cr.	Pitman Hill (County Portion)		St. Charles County Highway	FE 39 Pitman SCCO
E	10	Tributary to Dardenne Cr.	Pitman Hill (County Portion)		St. Charles County Highway	FE 44 Pitman SCCO
E	11	Tributary to Dardenne Cr.	Pitman Hill (County Portion)		St. Charles County Highway	FE 46 Pitman SCCO
E	12	Tributary to Dardenne Cr.	Pitman Hill (County Portion)		St. Charles County Highway	FE 50 Pitman SCCO
E	13	Tributary to Dardenne Cr.	Sammelmann/Renaissance	1	City of Weldon Spring	FE 12 Discharge from Renaissance Pl to swale
E	14	Tributary to Dardenne Cr.	Renaissance		Renaissance HOA	Outfall from private detention to drainage swale FE 17
E	15	Tributary to Dardenne Cr.	Renaissance		Renaissance HOA	Outfall from Renaissance Pl to private detention FE 1
E	16	Tributary to Dardenne Cr.	Lucerne / Renaissance		MANORS OF LUCERNE TRUSTEES	Outfall from Lucerne Pl detention to Creek FE 1
E	17	Tributary to Dardenne Cr.	Lucerne / Renaissance		MANORS OF LUCERNE TRUSTEES	Outfall from Lucerne Pl inlets to Detention FE 3
E	18	Tributary to Dardenne Cr.	Wolfrum Crossing / 94		Wolfrum Crossing / 94	FE 23
E	19	Tributary to Dardenne Cr.	Wolfrum Crossing / 94		MoDOT	FE 14 from Triad Crossing (Wolfrum)
E	20	Tributary to Dardenne Cr.	Wolfrum Crossing / 94		Wolfrum Crossing / 94	EP Unnamed
E	21	Tributary to Dardenne Cr.	Wolfrum Crossing / 94		MoDOT	Outfall from Wolfrum Crossing / Triad to creek
E	22	Tributary to Dardenne Cr.	Wolfrum Crossing / 94		MoDOT	EP 10 from Triad
E	23	Tributary to Dardenne Cr.	Wolfrum Crossing / 94		Triad to MoDOT 94	FES 1 Oil Change Private
E	24	Tributary to Dardenne Cr.	Wolfrum Crossing / 94		Wolfrum Crossing / 94 / MoDOT	FE 51 Drains to MoDOT MH then crossroad to E21
E	25	Tributary to Dardenne Cr.	Wolfrum Crossing / 94		Wolfrum Crossing / 94	FE 11 Discharge from inlets behind buildings
E	26	Tributary to Dardenne Cr.	Ehlmann Farms		EHLMANN FARMS HOMEOWNERS ASSOCIATION	FE 01 Outfall from detention to creek
E	27	Tributary to Dardenne Cr.	Ehlmann Farms		EHLMANN FARMS HOMEOWNERS ASSOCIATION	FE 03 Discharge Ehlman F. and area inlets to detention
E	28	Tributary to Dardenne Cr.	Shetland Court		Highlands HOA / City?	FE 320 from Shetland Court
E	29	Tributary to Dardenne Cr.	Williamsburg on the Green		WILLIAMSBURG ON THE GREEN OWNERS ASSOCIATION	Discharge from Roanoke Inlet into creek EP 28
E	30	Tributary to Dardenne Cr.	Highlands		City of St. Peters	Discharge from Detention into Creek FE300
E	31	Tributary to Dardenne Cr.	Highlands	1	City of Weldon Spring	Discharge from Shetland into Creek FE312
E	32	Tributary to Dardenne Cr.	Highlands	1	City of Weldon Spring	Discharge from Blairbeth into Creek FE 322
E	33	Tributary to Dardenne Cr.	Highlands	1	City of Weldon Spring	Discharge from Balmore Ct to Creek FE 314
E	34	Tributary to Dardenne Cr.	Highlands	1	City of Weldon Spring	Discharge from Bothwell to Creek FE 317
E	35	Tributary to Dardenne Cr.	Highlands	1	City of Weldon Spring	FE-1 Discharge along Wolfrum near creek
E	36	Tributary to Dardenne Cr.	Williamsburg on the Green		WILLIAMSBURG ON THE GREEN OWNERS ASSOCIATION	EP 24 Outfall to creek from New Haven Ct. inlets
E	37	Tributary to Dardenne Cr.	Williamsburg on the Green		WILLIAMSBURG ON THE GREEN OWNERS ASSOCIATION	EP 37 Outfall to creek from Hartford inlets
E	38	Tributary to Dardenne Cr.	Williamsburg on the Green		WILLIAMSBURG ON THE GREEN OWNERS ASSOCIATION	EP16 Outfall from detention into creek
E	39	Tributary to Dardenne Cr.	Williamsburg on the Green		WILLIAMSBURG ON THE GREEN OWNERS ASSOCIATION	EP 18 Discharge into detention from Ronoake Drive
E	40	Tributary to Dardenne Cr.	Williamsburg on the Green		WILLIAMSBURG ON THE GREEN OWNERS ASSOCIATION	EP 46 Outfall from detention into creek
E	41	Tributary to Dardenne Cr.	Williamsburg on the Green		WILLIAMSBURG ON THE GREEN OWNERS ASSOCIATION	EP 40 Discharge from Greenburg Ct. into detention
E	42	Tributary to Dardenne Cr.	Williamsburg on the Green		WILLIAMSBURG ON THE GREEN OWNERS ASSOCIATION	EP 11 Discharge into detention from Clarksburg Ct.
E	43	Tributary to Dardenne Cr.	Williamsburg on the Green		WILLIAMSBURG ON THE GREEN OWNERS ASSOCIATION	EP 8 Discharge into detention from Waynesboro Ct.
E	44	Tributary to Dardenne Cr.	Williamsburg on the Green		WILLIAMSBURG ON THE GREEN OWNERS ASSOCIATION	EP 49 Outfall from detention into creek
E	45	Tributary to Dardenne Cr.	Williamsburg on the Green		WILLIAMSBURG ON THE GREEN OWNERS ASSOCIATION	EP 1 Outfall from Roanoke Drive to creek
E	46	Tributary to Dardenne Cr.	Rodelle / Camelot		Camelot HOA	EP Unnamed
E	47	Tributary to Dardenne Cr.	Rodelle / Camelot		Camelot HOA	FE 3 Discharge into Detention Basin A

2022 Annual MS4 Report - February 2023

E	48	Tributary to Dardenne Cr.	Rodelle / Camelot		Camelot HOA	FE 9
E	49	Tributary to Dardenne Cr.	Rodelle / Camelot		Camelot HOA	FE 11 Outfall from Detention Basin A to Creek
E	50	Tributary to Dardenne Cr.	Willow Lake		Willow Lake HOA	Outfall from Retention FE 1 into Creek
E	51	Tributary to Dardenne Cr.	Willow Lake		Willow Lake HOA	FE3 from Willow Lakes Inlets into Retention Pond
E	52	Tributary to Dardenne Cr.	Camelot		Camelot HOA	Outfall from Detention FE 27
E	53	Tributary to Dardenne Cr.	Camelot		Camelot HOA	Overflow Structure in Detention Pond FE 23A
E	54	Tributary to Dardenne Cr.	Camelot		Camelot HOA	Discharge into Detention FE 23
E	55	Tributary to Dardenne Cr.	Camelot		Camelot HOA	Discharge into Detention FE 30
E	56	Tributary to Dardenne Cr.	Tudor Trace		Tudor Trace HOA	FES outfall along Independence FE 1
E	57	Tributary to Dardenne Cr.	Tudor Trace		Tudor Trace HOA	FES drainage from corner property FE 7
E	58	Tributary to Dardenne Cr.	Grey Oaks / Wolfrum		Grey Oaks HOA	FES outfall from Detention FES 2
E	59	Tributary to Dardenne Cr.	Grey Oaks / Wolfrum		Grey Oaks HOA	Overflow Structure in Detention Pond FES 5
E	60	Void	Void			Mis-labeled
E	61	Tributary to Dardenne Cr.	Highlands/Rosemount	1	City of Weldon Spring	Outfall to Creek FE47
E	62	Tributary to Dardenne Cr.	Newgrange Pass/Whitmoor		WHITTAKER GOLF INC	Outfall to Creek EP 3-4
E	63	Tributary to Dardenne Cr.	Highlands/Rosemount	1	City of Weldon Spring	Outfall to Creek FE-35
E	64	Tributary to Dardenne Cr.	Whitmoor		WHITTAKER GOLF INC	EP - Unnamed - Outfall from overflow structure pond
E	65	Tributary to Dardenne Cr.	Whitmoor		WHITTAKER GOLF INC	EP 35 outfall into pond from W Meath Ring
E	66	Tributary to Dardenne Cr.	Whitmoor		WHITTAKER GOLF INC	Outfall from Portmarnock Ln to common ground EP1
E	67	Tributary to Dardenne Cr.	Whitmoor		WHITTAKER GOLF INC	EP 8
E	68	Tributary to Dardenne Cr.	Whitmoor		WHITTAKER GOLF INC	EP 26
E	69	Tributary to Dardenne Cr.	Whitmoor		WHITTAKER GOLF INC	EP 3-18
E	70	Tributary to Dardenne Cr.	Whitmoor		WHITTAKER GOLF INC	EP 3-6
E	71	Tributary to Dardenne Cr.	Wolfrum / 94		Wolfrum / 94	
E	72	Tributary to Dardenne Cr.	Wolfrum / 94		Wolfrum / 94	
E	73	Tributary to Dardenne Cr.	Wolfrum / Highlands		Wolfrum / Highlands	
E	74	Tributary to Dardenne Cr.	Blueridge Terrace		Developer	Outfall from Enclave Ter Ct to backyard
E	75	Tributary to Dardenne Cr.	City Hall / Independence	1	City Hall / Independence	Outfall from Independence Road Drainage to creek
F	1	Tributary to Dardenne Cr.	Pitman Hill Road	1	City of Weldon Spring	EP 51 Outfall to creek from inlets on Pitman
F	2	Tributary to Dardenne Cr.	Pitman Hill Road	1	City of Weldon Spring	EP 56 Outfall to creek from Pitman inlets
F	3	Tributary to Dardenne Cr.	Pitman Hill Road	1	City of Weldon Spring	FE 59A Outfall to creek from Pitman inlets
F	4	Tributary to Dardenne Cr.	Pitman Hill Road		Ameren Substation	EP 1
F	5	Tributary to Dardenne Cr.	Pitman Hill Road		City of Weldon Spring	FE 61
F	6	Tributary to Dardenne Cr.	Pitman Hill Road		City of Weldon Spring	BOX CULVERT
F	7	Tributary to Dardenne Cr.	Pitman Hill Road		City of Weldon Spring	FE 62
F	8	Tributary to Dardenne Cr.	Whitmoor		WHITTAKER GOLF INC	EP 2-1
F	9	Tributary to Dardenne Cr.	Whitmoor		WHITTAKER GOLF INC	BOX CULVERT 1
F	10	Tributary to Dardenne Cr.	Whitmoor		WHITTAKER GOLF INC	FE 3-38 Whitmoor Phase 3
F	11	Tributary to Dardenne Cr.	Whitmoor		WHITTAKER GOLF INC	EP 2-14 Whitmoor Phase 2
F	12	Tributary to Dardenne Cr.	Whitmoor		WHITTAKER GOLF INC	EP 2-19 Whitmoor Phase 2
F	13	Tributary to Dardenne Cr.	Whitmoor		WHITTAKER GOLF INC	EP 2-34 Whitmoor Phase 2
F	14	Tributary to Dardenne Cr.	Whitmoor		WHITTAKER GOLF INC	FE 3-46 Whitmoor Phase 3
F	15	Tributary to Dardenne Cr.	Whitmoor		WHITTAKER GOLF INC	FE 3-26 Whitmoor Phase 3
F	16	Tributary to Dardenne Cr.	Whitmoor		WHITTAKER GOLF INC	FE 3-35 Whitmoor Phase 3
F	17	Tributary to Dardenne Cr.	Whitmoor		WHITTAKER GOLF INC	FE 3-1 Whitmoor Phase 3
F	18	Tributary to Dardenne Cr.	Whitmoor		WHITTAKER GOLF INC	FE 1 Whitmoor Villas
F	19	Tributary to Dardenne Cr.	Whitmoor		WHITTAKER GOLF INC	FE M8-7 Forest at Whitmoor
F	20	Tributary to Dardenne Cr.	Whitmoor		WHITTAKER GOLF INC	ME 1 Cross Road Culvert
F	21	Tributary to Dardenne Cr.	Whitmoor		WHITTAKER GOLF INC	EP 60 Whitmoor Phase 1 Addition
F	22	Tributary to Dardenne Cr.	Whitmoor		WHITTAKER GOLF INC	FE 71 Whitmoor Phase 1 Addition

2022 Annual MS4 Report - February 2023

F	23	Tributary to Dardenne Cr.	Whitmoor		WHITTAKER GOLF INC	FE M1-7 Forest at Whitmoor
F	24	Tributary to Dardenne Cr.	Whitmoor		WHITTAKER GOLF INC	FE M1-1 Forest at Whitmoor
F	25	Tributary to Dardenne Cr.	Whitmoor		WHITTAKER GOLF INC	FE 72 Whitmoor Phase 1 Addition
F	26	Tributary to Dardenne Cr.	Whitmoor		WHITTAKER GOLF INC	FE M1-5 Forest at Whitmoor
F	27	Tributary to Dardenne Cr.	Whitmoor		WHITTAKER GOLF INC	EP - Unnamed Whitmoor Phase 4
F	28	Tributary to Dardenne Cr.	Whitmoor		WHITTAKER GOLF INC	EP 36 Whitmoor Phase 4
F	29	Tributary to Dardenne Cr.	Whitmoor		WHITTAKER GOLF INC	EP M4
F	30	Tributary to Dardenne Cr.	Whitmoor		WHITTAKER GOLF INC	EP 36 Whitmoor Phase 4
F	31	Tributary to Dardenne Cr.	Whitmoor		WHITTAKER GOLF INC	FE 73 Whitmoor Phase 1 Addition
F	32	Tributary to Dardenne Cr.	Whitmoor		WHITTAKER GOLF INC	ME 3 Cross Road Culvert
F	33	Tributary to Dardenne Cr.	Whitmoor		WHITTAKER GOLF INC	FE 30 Whitmoor Phase 4
F	34	Tributary to Dardenne Cr.	Whitmoor		WHITTAKER GOLF INC	EP 32 Whitmoor Phase 4
F	35	Tributary to Dardenne Cr.	Whitmoor		WHITTAKER GOLF INC	EP 2-1 Whitmoor Phase 2
F	36	Tributary to Dardenne Cr.	Whitmoor		WHITTAKER GOLF INC	EP 2-10 Whitmoor Phase 2
F	37	Tributary to Dardenne Cr.	Whitmoor		WHITTAKER GOLF INC	Whitmoor Cross Road Culvert ME 6
F	38	Tributary to Dardenne Cr.	Whitmoor		WHITTAKER GOLF INC	EP 2-39 Whitmoor Phase 2
F	39	Tributary to Dardenne Cr.	Whitmoor		WHITTAKER GOLF INC	EP 2-41 Whitmoor Phase 2
F	40	Tributary to Dardenne Cr.	Whitmoor		WHITTAKER GOLF INC	EP 2-44 Whitmoor Phase 2
F	41	Tributary to Dardenne Cr.	Whitmoor		WHITTAKER GOLF INC	EP 2-46 Whitmoor Phase 2
F	42	Tributary to Dardenne Cr.	Whitmoor		WHITTAKER GOLF INC	EP 8-1 WCC PLAT 7 Series 800
F	43	Tributary to Dardenne Cr.	Whitmoor		WHITTAKER GOLF INC	EP 2-71 Whitmoor Phase 2
F	44	Tributary to Dardenne Cr.	Whitmoor		WHITTAKER GOLF INC	EP 2-64 Whitmoor Phase 2
F	45	Tributary to Dardenne Cr.	Whitmoor		WHITTAKER GOLF INC	FE 2-74 Whitmoor 2
F	46	Tributary to Dardenne Cr.	Whitmoor		WHITTAKER GOLF INC	EP 61 Whitmoor Phase 4
F	47	Tributary to Dardenne Cr.	Whitmoor		WHITTAKER GOLF INC	EP 7 Whitmoor Phase 4
F	48	Tributary to Dardenne Cr.	Whitmoor		WHITTAKER GOLF INC	EP 58 Whitmoor Phase 4
F	49	Tributary to Dardenne Cr.	Whitmoor		WHITTAKER GOLF INC	EP 54 Whitmoor Phase 4
F	50	Tributary to Dardenne Cr.	Whitmoor		WHITTAKER GOLF INC	EP 1 Whitmoor Phase 4
F	51	Tributary to Dardenne Cr.	Whitmoor		WHITTAKER GOLF INC	EP 42 Whitmoor Phase 4
F	52	Tributary to Dardenne Cr.	Whitmoor		WHITTAKER GOLF INC	EP 22 Whitmoor Phase 4
F	53	Tributary to Dardenne Cr.	Whitmoor		WHITTAKER GOLF INC	EP 17 Whitmoor Phase 4
F	54	Tributary to Dardenne Cr.	Whitmoor		WHITTAKER GOLF INC	FE 10 Whitmoor Phase 4
F	55	Tributary to Dardenne Cr.	Whitmoor		Crosshaven HOA	FE 1 Crosshaven Outfall to Whitmoor from Detention
F	56	Tributary to Dardenne Cr.	Whitmoor		Crosshaven HOA	FE 8 Crosshaven Discharge into Detention
F	57	Tributary to Dardenne Cr.	Whitmoor		Crosshaven HOA	FE 12 Crosshaven Discharge into Detention
F	58	Tributary to Dardenne Cr.	Pitman Hill		City of Weldon Spring	EP 79 Pitman Hill Improvements
F	59	Tributary to Dardenne Cr.	Pitman Hill	1	City of Weldon Spring	EP 81A Pitman Hill Improvements discharge to swale
F	60	Tributary to Dardenne Cr.	Pitman Hill	1	City of Weldon Spring	FE 89 Pitman Hill Improvements discharge to swale
F	61	Tributary to Dardenne Cr.	Pitman Hill	1	City of Weldon Spring	FE 99 Pitman Hill Improvements discharge to swale
F	62	Tributary to Dardenne Cr.	Whitmoor		WHITTAKER GOLF INC	FE 2-59 Whitmoor Phase 2
F	63	Tributary to Dardenne Cr.	Whitmoor		WHITTAKER GOLF INC	FE 6 Crosshaven Phase 1
F	64	Tributary to Dardenne Cr.	Whitmoor		WHITTAKER GOLF INC	FE 403 Summit at Whitmoor
G		Tributary to Missouri River	Katy Trail		State of Missouri	Outfall at City Border
G	1	Tributary to Missouri River	Hartwig/Meadows/School Road		FRANCIS HOWELL R III SCHOOL DISTRICT	Discharge Outfall from Detention, FES 1 36" RCP
G	2	Tributary to Missouri River	Hartwig/Meadows/School Road		FRANCIS HOWELL R III SCHOOL DISTRICT	Parking lot outfall to Detention
G	3	Tributary to Missouri River	Hartwig/Meadows/School Road		FRANCIS HOWELL R III SCHOOL DISTRICT	Parking lot outfall to Detention
G	4	Tributary to Missouri River	Hartwig/Meadows/School Road		FRANCIS HOWELL R III SCHOOL DISTRICT	Cross Road Pipe
G	5	Tributary to Missouri River	Hartwig/Meadows/School Road		FRANCIS HOWELL R III SCHOOL DISTRICT	Discharge Outfall from Detention
G	6	Tributary to Missouri River	Hartwig/Meadows/School Road		FRANCIS HOWELL R III SCHOOL DISTRICT	Parking lot outfall to Detention
G	7	Tributary to Missouri River	Hartwig/Meadows/School Road		FRANCIS HOWELL R III SCHOOL DISTRICT	Cross Road Pipe

2022 Annual MS4 Report - February 2023

G	8	Tributary to Missouri River	Hartwig/Meadows/School Road		FRANCIS HOWELL R III SCHOOL DISTRICT	Cross Road Pipe
G	9	Tributary to Missouri River	Hartwig/Meadows/School Road		WORLDCOM TECHNOLOGIES INC	Outfall in Detention from Parking 21
G	10	Tributary to Missouri River	Hartwig/Meadows/School Road		WORLDCOM TECHNOLOGIES INC	Outfall to Property Line from Detention
G	11	Tributary to Missouri River	Hartwig/Meadows/School Road		WORLDCOM TECHNOLOGIES INC	Riser / Overflow Structure in Detention 45
G	12	Tributary to Missouri River	Hartwig/Meadows/School Road		WORLDCOM TECHNOLOGIES INC	Outfall in Detention from Parking 19
G	13	Tributary to Missouri River	Wycliff / Independence		City of Weldon Spring	Discharge Outfall from Independence
G	14	Tributary to Missouri River	Westchester		Westchester HOA	Outfall from Westchester Detention, FE 50
G	15	Tributary to Missouri River	Westchester		Westchester HOA	Discharge from Westchester Meadows to detention FES2
G	16	Tributary to Missouri River	Westchester		Westchester HOA	Discharge From Canterfield to Detention FE 63
G	17	Tributary to Missouri River	Westchester		Westchester HOA	Discharge from Canterfield to Detention FE 69
G	18	Tributary to Missouri River	Camelot Perceval	1	Camelot HOA	FE 2-81 Phase 2 Outfall from Peerceval Ct to creek
G	19	Tributary to Missouri River	Camelot Perceval		Camelot HOA	FE 2-46A Phase 2 Lake D overflow discharge to creek
G	20	Tributary to Missouri River	Camelot Perceval	1	Camelot HOA	FE 2-46 Phase 2 Outfall from Perceval inlets into Lake
G	21	Tributary to Missouri River	Camelot - Galahad	1	Camelot HOA	FE 2-51 Phase 2 Outfall from Gallahad Ct. to ditch
G	22	Tributary to Missouri River	Camelot - Galahad	1	Camelot HOA	FE 2-75 Phase 2 Outfall from Merlin Ct. to ditch
G	23	Tributary to Missouri River	Camelot - Galahad	1	Camelot HOA	FE 2-53 Phase 2 Outfall from Gallahad to ditch
G	24	Tributary to Missouri River	Camelot - Merlin	1	Camelot HOA	FE 2-72 Phase 2 Outfall from Merlin to ditch
G	25	Tributary to Missouri River	Camelot - Merlin	1	Camelot HOA	FE 2-66 Phase 2 Outfall from Enchanted to ditch
G	26	Tributary to Missouri River	Camelot - Guinevere Cul-de-sac	1	Camelot HOA - Broke Pipe	FE 2-83 Phase 2 Outfall from Guinevere Ct. to ditch
G	27	Tributary to Missouri River	Camelot		Camelot HOA	FE 2-95A Phase 2 - Outfall from Lake Overflow pipe
G	28	Tributary to Missouri River	Camelot - Legend Ct.	1	Camelot HOA	FE 2-95 Phase 2 Outfall from Legend Ct to Lake
G	29	Tributary to Missouri River	Camelot - Grail Castle	1	Camelot HOA	FE 2-98 Phase 2 Outfall from Grail Castle Ct to creek
G	30	Tributary to Missouri River	Camelot - Guinevere Ct.	1	Camelot HOA	FE 2-85 Phase 2 Outfall from Guinevere Ct. to creek
G	31	Tributary to Missouri River	Camelot - Guinevere Dr		Camelot HOA	FE 2-88 Phase 2 Discharge to creek from area inlets
G	32	Tributary to Missouri River	Camelot - Camelot Drive	1	Camelot HOA	FE 30 Camelot Phase 1 - Discharge from Camelot Dr.
G	33	Tributary to Missouri River	Camelot - Legend Ct.	1	Camelot HOA	FE 2-93 Phase 2 Outfall from Legend Ct. to creek
G	34	Tributary to Missouri River	Camelot - Dry Detention Basin E		Camelot HOA	FE 2-31A Phase 2 Outfall from Detention E to creek
G	35	Tributary to Missouri River	Camelot - Caliburn Ct.		Camelot HOA	FE 2-31 Phase 2 Outfall from Caliburn Ct to Detention
G	36	Tributary to Missouri River	Camelot - Gareth	1	Camelot HOA	FE 2-35 Phase 2 Outfall from Gareth to creek
G	37	Tributary to Missouri River	Camelot - Guinevere Drive	1	Camelot HOA	FE 2-38 Phase 2 Outfall from Guinevere Inlets
G	38	Tributary to Missouri River	Camelot - Guinevere Drive	1	Camelot HOA	FE 2-43 Phase 2 Discharge from Guinevere to backyard
G	39	Tributary to Missouri River	Camelot		City of Weldon Spring	EP - Unnamed Cross Road Pipe
G	40	Tributary to Missouri River	Camelot - Agravaine Cul de sac		Camelot HOA	FE 2-1 Phase 2 - Outfall from Basin G to creek
G	41	Tributary to Missouri River	Camelot - Agravaine Cul de sac		Camelot HOA	FE 2-8 Phase 2 Discharge from Agravaine into Basin G
G	42	Tributary to Missouri River	Camelot - Camelot Drive		Camelot HOA	FE 2-3 Phase 2 Discharge from Camelot Drive to det
G	43	Tributary to Missouri River	Camelot - Wizard Ct	1	Camelot HOA	FE 2-10 Phase 2 Outfall from Wizard Ct to ditch
G	44	Tributary to Missouri River	Camelot - Between Camelot and Lancelot		Camelot HOA	FE 2-12A Phase 2 Outfall from Lake F overflow
G	45	Tributary to Missouri River	Camelot - Camelot Drive	1	Camelot HOA	FE 2-13 Phase 2 Outfall from Camelot Dr inlets to Lake F
G	46	Tributary to Missouri River	Camelot - Lancelot		Camelot HOA	FE 2-20 Phase 2 - Outfall from backyards to Lake F
G	47	Tributary to Missouri River	Camelot - Lancelot	1	Camelot HOA	FE 2-26 Phase 2 - Outfall from Lancelot inlets to Lake F
G	48	Tributary to Missouri River	Camelot - Lancelot		Camelot HOA	FE 2-28 Phase 2 - Outfall from Lancelot Drive to swale
H		Tributary to Missouri River	Katy Trail		State of Missouri	
I		Tributary to Missouri River	Katy Trail		State of Missouri	
I	1	Tributary to Missouri River	Whitmoor - Grey Fox		WHITTAKER GOLF INC	FE 44 Whitmoor Detention
I	2	Tributary to Missouri River	Whitmoor - Grey Fox		WHITTAKER GOLF INC	EP 40 Whitmoor Phase 1
I	3	Tributary to Missouri River	Whitmoor - Grey Fox		WHITTAKER GOLF INC	EP 51 Whitmoor Phase 1
I	4	Tributary to Missouri River	Whitmoor - Grey Fox		WHITTAKER GOLF INC	EP 54 Whitmoor Phase 1
I	5	Tributary to Missouri River	Willow Lake- Wolfrum Road		?	FE 16
J		Tributary to Missouri River	Katy Trail		State of Missouri	
K		Tributary to Missouri River	Katy Trail		State of Missouri	

2022 Annual MS4 Report - February 2023

L		Tributary to Missouri River	Katy Trail - Austin Ridge		State of Missouri	
L	1	Tributary to Missouri River	Summit at Whitmoor	1		FE 302 Outfall from Detention Basin OS
L	2	Tributary to Missouri River	Summit at Whitmoor			FE 100 Discharge from Summit Ridge to detention
L	3	Tributary to Missouri River	Whitmoor Phase 4		WHITTAKER GOLF INC	EP 51 Whitmoor Phase 4
Total Number of Weldon Spring Maintained Outfalls				51		

Outfall Tracing Guide – new 2021

MS4 SWPPP

City of Weldon Spring

Outfall Tracing
This shows the main developments draining to each outfall.

Outfall	A	B	C	D	E	F	G	H	I	J	K	L
River	Mississippi Dardenee Creek	Mississippi Dardenee Creek	Mississippi Dardenee Creek	Mississippi Dardenee Creek	Mississippi Dardenee Creek	Mississippi Dardenee Creek	Missouri River	Missouri River	Missouri River	Missouri River	Missouri River	Missouri River
Tributary	Crooked Creek	Crooked Creek	Crooked Creek	Crooked Creek	Baltic Creek	Dardenee Creek	Dardenee Creek	Old Wolfrum Tracts (Walsh/Hawthorn/Moore)	Old Wolfrum Tracts (Walsh/Kolb)	Old Wolfrum Tracts (Walsh/Kolb)	Upper Whitmoor (SCCO-Austin Ridge)	
Tributary	Crooked Creek	Crooked Creek	Crooked Creek	Crooked Creek	Baltic Creek	Baltic Creek	Baltic Creek	Old Wolfrum Tracts (Walsh/Hawthorn/Moore)	Old Wolfrum Tracts (Walsh/Kolb)	Old Wolfrum Tracts (Walsh/Kolb)	Upper Whitmoor (SCCO-Austin Ridge)	
	Persimmon Wood Golf	Persimmon Woods Golf	kolb	Wrenwyck	Pitnam Hill Road	Veteran's Tribute Park	Old Wolfrum Tracts (Walsh/Hawthorn/Moore)	Old Wolfrum Tracts (Walsh/Prov3 56/Tavalo)	Old Wolfrum Tracts (Walsh/Kolb)	Old Wolfrum Tracts (Walsh/Kolb)	Upper Whitmoor (SCCO-Austin Ridge)	
		Faith Church		Lutheran Senior	Manors of Lucerne	Whitmoor	Bender		STRATHALBYN CLUB	Whitmoor		
		Trace Apartments		Westchester Farms	Renaissance Place	Roseberry Topping	FHSD					
		Chapter One		Westerfield	Ehlmann Farms	Crosshaven	Wycliff / Dutchman					
		Osage Park		El Caballos	The Highlands		Camelot					
		FHSD		Butterfly Lane	Whitmoor							
		Fab Tech		Independence	St. John's Church							
		Walmar Industrial			Williamsburg on the Green							
		Christian Life Center			City Hall and Park							
		Plaza Motors			Rodelle Woods							
		Ameren Fire Department			Camelot							
		Heartland Bank			Grey Oaks							
		Route 94			Willow Lakes							
		Centerpointe Hospital										
		Southbrook Forest										
		QT										
		Hunters Green										



General State Operating Permit
MOR04C070

2/9/2022

Forms and Checklists

New 2022 – Revised Weekly Land Disturbance Inspection Form (more applicable to City projects.

LAND DISTURBANCE WEEKLY INSPECTION
CITY OF WELDON SPRING
5401 Independence Road, Weldon Spring, MO 63304
636-441-2110



This form is to be filled out weekly, and after a 1/2" rain (5" snow melt) event within 24 hours.

This form is to be emailed

to cityengineer@weldonspring.org on a weekly basis by 5 pm Friday of every week.

Failure to comply may result in 1.) A Stop Work Order from the City Engineer and 2.) A fine not to exceed \$500/daily (Ord. No. 18-12, 12-11-2018)

MoDNR Permit No.: _____ Week Ending: _____
Project Address: _____
Contractor: _____ Email: _____
Inspected By: _____ Contact Phone #: _____
☐ Weekly Inspection ☐ Post Event _____ Inches or Rain/Snow on _____

BMP & Site Observations:

	Satisfactory	Deficient	Replace	N/A	
Perimeter Protection / Silt Fence	<input type="checkbox"/>	<input type="checkbox"/>	<input type="checkbox"/>	<input type="checkbox"/>	_____
Entrance Rocked / Not Tracking to Road	<input type="checkbox"/>	<input type="checkbox"/>	<input type="checkbox"/>	<input type="checkbox"/>	_____
Trash Containers Covered	<input type="checkbox"/>	<input type="checkbox"/>	<input type="checkbox"/>	<input type="checkbox"/>	_____
Ditch Checks	<input type="checkbox"/>	<input type="checkbox"/>	<input type="checkbox"/>	<input type="checkbox"/>	_____
Inlet Protection	<input type="checkbox"/>	<input type="checkbox"/>	<input type="checkbox"/>	<input type="checkbox"/>	_____
SWPPP On Site / Updated Regularly	<input type="checkbox"/>	<input type="checkbox"/>	<input type="checkbox"/>	<input type="checkbox"/>	_____
Trash and Loose Debris Picked Up	<input type="checkbox"/>	<input type="checkbox"/>	<input type="checkbox"/>	<input type="checkbox"/>	_____
Tanks Stored Undercover or Kept Inside	<input type="checkbox"/>	<input type="checkbox"/>	<input type="checkbox"/>	<input type="checkbox"/>	_____
Spill Kits Onsite	<input type="checkbox"/>	<input type="checkbox"/>	<input type="checkbox"/>	<input type="checkbox"/>	_____
Disturbed Areas Stabilized within 14 Days	<input type="checkbox"/>	<input type="checkbox"/>	<input type="checkbox"/>	<input type="checkbox"/>	_____
Concrete Washout Pits / No Runoff	<input type="checkbox"/>	<input type="checkbox"/>	<input type="checkbox"/>	<input type="checkbox"/>	_____
_____	<input type="checkbox"/>	<input type="checkbox"/>	<input type="checkbox"/>	<input type="checkbox"/>	_____
_____	<input type="checkbox"/>	<input type="checkbox"/>	<input type="checkbox"/>	<input type="checkbox"/>	_____

- Maintenance of Deficient Items Must be Completed by **Close of the Next Business Day** following Inspection.
- New/Additional BMPs Needed to Prevent Sediment Leaving Site must be installed **within 7 days of Inspection**. SWPPP and erosion control site plan sheets must be updated to reflect all additions / changes.

Areas where land disturbance activities started: _____

SWPPP Updates: _____

Inspector's* Signature: _____ Date: _____

**Inspector is required to provide Certificate of Completion of EPA's Construction General Permit Site Inspector Training Course and Pass the Final Exam. Certificate must be on file at the City of Weldon Spring.*

New 2022 – Revised Outfall Monitoring Field Data Sheet (adds more data)



City of Weldon Spring MS4

Outfall Monitoring Field Datasheet

Date: _____ Time: _____ AM/PM

☐ Dry Weather Screening ☐ Potential Illicit Discharge Investigation
Location/Address: _____ ☐ Sample Taken - Label _____

Outfall: A B C D E F G H I J

Cracked Creek ☐ A Persimmon Woods ☐ B Persimmon Woods, Vanguard, Chapter 1, Cedar Glen, Huber, Enterprise Leasing, Hunters Green, Center Point Hospital, QT, Francis Howell, Messiah Lutheran, Plaza Motors, Ozark Way, MSHP ☐ C Kolb ☐ D Wrenwyck

Baltic Creek / Tributary 7 ☐ E Manors of Lucerne, Ehlmann Farms, Highlands, Williamsburg, City Park, Nancy Lane

☐ F Veterans Tribute Park, Whitmoor CC, Crosshaven

Missouri River ☐ G Katy, Independence Elementary, Bryan Middle Dutchman, Camelot - Patriotic, Gallahad, Perceval ☐ H Katy Old Wolfum ☐ I Katy, Wolfum, Whitmoor - Grey Fox, Gun Club ☐ J Katy, Gun Club, ☐ K Katy, 1/2 Upper Whitmoor (Austin Ridge) ☐ L Katy

Conditions

Weather: ☐ Clear ☐ Cloudy ☐ Rain Air Temp _____ F, Water Temp _____ FLast Rain / Precipitation ☐ < 72 Hours ☐ > 72 Hours Inspections should be after 72 hours.Flow? Y / N Source: ☐ Ground Water ☐ Sprinklers ☐ Other _____Estimate Flow ☐ None ☐ Trickle ☐ _____☐ Natural Creek ☐ Concrete Channel ☐ Manhole ☐ Culvert/Pipe Outfall ☐ Earthen Channel

Observations:

Odor	None	Sewage	Sulfides	Petroleum	Manure	
Color	None	Yellow	Brown	White	Other	
Turbidity	Clear	Cloudy	Murky	Dry		
Floatables	None	Trash	Bubble	Foam	Oil Sheen	Scum / Algae
Condition	Normal	Blockage	Damage			
Deposits / Stains	Sediment	Fines/Gravel	Algae			
Impact?	<input type="checkbox"/> No Length of Stream Impact: _____ <input type="checkbox"/> Vegetation <input type="checkbox"/> Wildlife					
pH	Acidic 0 1 2 3 4 5 6 7 8 9 10 11 12 13 14 Alkaline Actual pH Reading _____					
Spill?	<input type="checkbox"/> No <input type="checkbox"/> Yes - Contact 24/7 Spill Hotline 573-634-2463 / 800-424-8802					

☐ Further Testing Needed - St. Louis Testing Laboratories 314-531-8080 testlab@stltestlab.comPhotos? ☐ No ☐ Yes Storage Location: G:BillsPhotos/OutfallInspections/_____☐ No☐ Yes Storage Location _____Overall Evaluation: ☐ No Issues ☐ Minor Issues ☐ Significant Issues – Follow up Needed

Signature _____ Date _____

FORM WSM54OutfallMonitor2022



City of Weldon Spring Storm Water Management Documentation

Date _____

Time _____

AM/PM

<input type="checkbox"/> Public Education and Outreach	<input type="checkbox"/> Construction Site Erosion Control	<input type="checkbox"/> Public Participation & Involvement
<input type="checkbox"/> Post Construction Stormwater Management	<input type="checkbox"/> Illicit Discharge Detection and Elimination-	<input type="checkbox"/> Pollution Prevention and Good Housekeeping-

LOCATION / ADDRESS _____

CONTACT INFORMATION _____

SUMMARY

☐ Photos Taken ☐ Attached ☐ Computer Drive Stored _____

Type of Inspection / Review / Documentation

☐ N/A ☐ Routine ☐ During Storm Event ☐ Post-Storm Event ☐ Citizen Concern

Focus / Inspection Area

☐ Outfall ☐ Detention ☐ Creek / Stream ☐ Inlets / Pipes ☐ Slopes / Field
☐ Construction Site ☐ Building/Home Site ☐ Vehicles / Equipment ☐ Education / Involvement

Observations / Findings

Corrective Actions or Follow-Up Needed? Y/N

Follow Up Notes

☐ Corrective Actions Completed _____

☐ N/A

☐ See Attached Notes

Signature _____ Date _____

Facility and Park Inspection Checklist

WELDON SPRING MS4 FACILITY & PARK INSPECTION CHECKLIST MS4 Measure #6 Prevention and Good Housekeeping Exterior Areas

Facility Name: _____

Date of Inspection: _____

Name of Inspector: _____

☐ Additional comments on back of page

Park Building and Vehicle Storage Areas	OK YES	Needs work NO	N/A	Location	Comments
City Pickup Truck clean and not leaking fluids					
City mowers clean and not leaking fluids					
City tractor / loader clean and not leaking fluids					
City battery operated golf carts working and not leaking battery fluid					
All vehicles washed at private off-site car washes					
Fuel / Oil / Chemicals stored safely					
Exterior water spigots not dripping or leaking					
Absorbent spill bags/kit available for any leaks					
Secondary containment for any stored liquids > 50 gallons					
Buildings free from mold/mildew					
Adequate water drainage near foundation (no standing water)					
Building swept and kept clean					
Dumpster and trash collection areas	OK	Needs work	N/A	Location	Comments
Dumpster doors close properly					
Dumpster drains plugged or screened					
No leaking fluid from Dumpsters					
Exterior trash cans have plastic liners and tight-fitting lids					
Pet Waste Disposal Stations with plenty of bags					
No loose trash around dumpsters and/or trash cans					

WELDON SPRING MS4 FACILITY & PARK INSPECTION CHECKLIST
MS4 Measure #6 Prevention and Good Housekeeping
Exterior Areas

Facility Name: _____

Date of Inspection: _____

Name of Inspector _____

☐ Additional comments on back of page

<i>Park Grounds and Building Exterior</i>	<i>OK YES</i>	<i>Needs work NO</i>	<i>N/A</i>	<i>Location</i>	<i>Comments</i>
Park grounds free of eroded area					
City pond aquatic life healthy					
City pond banks free of erosion					
City pond overflow structure / pipes free of obstructions and maintained					
Bio detention area maintained and functioning					
Parking lots free of debris, silt, tracked materials					

[] photos attached storage location _____

Notes:



City Engineer Checklist for: _____

General

- ☐ Applicant's Contact Information Included? Name/Address/Phone/Email ☐ Yes ☐ No
- ☐ Approved by Weldon Spring Planning and Zoning? ☐ Yes ☐ No ☐ N/A
- ☐ Professional Engineer Seal and Signature? ☐ Yes ☐ No ☐ N/A
- ☐ Engineer / Architect / Surveyor / Landscape Architects contact information? ☐ Yes ☐ No ☐ N/A
- ☐ Certification Plan meets all Weldon Spring / St. Charles County Ordinances? ☐ Yes ☐ No ☐ N/A
- ☐ Plan Date and All Revision Dates with Description of Revisions? ☐ Yes ☐ No ☐ N/A
- ☐ Titles and Numbering on all plan sheets? ☐ Yes ☐ No ☐ N/A
- ☐ Scale and graphic scale shown? ☐ Yes ☐ No ☐ N/A
- ☐ North Arrow? ☐ Yes ☐ No
- ☐ Plan Legend with all lines and symbols? ☐ Yes ☐ No ☐ N/A
- ☐ Boundary Survey of site? ☐ Yes ☐ No ☐ N/A
- ☐ Property Information shown on plans? Owner, Parcel Number ☐ Yes ☐ No
- ☐ Existing and Proposed Utilities and Easements shown? ☐ Yes ☐ No ☐ N/A
- ☐ Existing and Proposed Public Right-of-Ways / Easements shown? ☐ Yes ☐ No ☐ N/A
- ☐ Existing and Proposed Drainage Easements Shown? ☐ Yes ☐ No ☐ N/A
- ☐ Sidewalks, Shared Use Paths Shown and Compliant? ☐ Yes ☐ No ☐ N/A

Storm Water Management / MS4 / Drainage

- ☐ Topography of site showing existing and proposed contours 1' max ☐ Yes ☐ No ☐ N/A
- ☐ Drainage culverts shown under driveways, ditch line maintained? ☐ Yes ☐ No ☐ N/A
- ☐ Floodplain Limits Shown? ☐ Yes ☐ No ☐ N/A
- ☐ Are there known Drainage Issues downstream of this development? ☐ Yes ☐ No
- ☐ Buffer Areas Maintained according to Ordinances? ☐ Yes ☐ No ☐ N/A
- ☐ Drain Patterns with flow arrows shown? ☐ Yes ☐ No ☐ N/A
- ☐ Hydrology Calculations of pre-developed and post-developed conditions? ☐ Yes ☐ No ☐ N/A
- ☐ Environmentally sensitive areas shown? Wetlands, riparian buffers? ☐ Yes ☐ No ☐ N/A
- ☐ Disturbed area > 1 Acre? ☐ Yes - MoDNR Land Disturbance Permit Needed ☐ No
- ☐ Industrial Site / Commercial Car Wash / Potential Pollutant Concern? ☐ Yes ☐ No ☐ N/A
- ☐ Detention / Retention Basin Design ? ☐ Yes ☐ No ☐ N/A
- ☐ Green Infrastructure Included? ☐ Yes ☐ No ☐ N/A
- ☐ Maintenance Plan for Detention / Retention Basin / Green Infrastructure Included? ☐ Yes ☐ No ☐ N/A
- ☐ Industrial - Stormwater ordinances and requirements to owner? ☐ Yes ☐ No ☐ N/A
- ☐ Pool - Stormwater ordinances and requirements to owner? ☐ Yes ☐ No ☐ N/A
- ☐ Erosion and Sediment Control Plan Provided? ☐ Yes ☐ No ☐ N/A



P

SWPPP Checklist for Disturbances > 1 Acre

- | | |
|--|---|
| <input type="checkbox"/> SWPPP Included on plans for disturbances >1 Acre? | <input type="checkbox"/> Yes <input type="checkbox"/> No <input type="checkbox"/> N/A |
| <input type="checkbox"/> 24 Hour Emergency Contacts provided? | <input type="checkbox"/> Yes <input type="checkbox"/> No <input type="checkbox"/> N/A |
| <input type="checkbox"/> Engineer Certification of Design/Specs.? | <input type="checkbox"/> Yes <input type="checkbox"/> No <input type="checkbox"/> N/A |
| <input type="checkbox"/> Copy of the SWPPP will be kept onsite? | <input type="checkbox"/> Yes <input type="checkbox"/> No <input type="checkbox"/> N/A |
| <input type="checkbox"/> Rock construction entrances/exits, | <input type="checkbox"/> Yes <input type="checkbox"/> No <input type="checkbox"/> N/A |
| <input type="checkbox"/> Vehicle wash area to prevent tracking? | <input type="checkbox"/> Yes <input type="checkbox"/> No <input type="checkbox"/> N/A |
| <input type="checkbox"/> Copy of the SWPPP will be kept onsite? | <input type="checkbox"/> Yes <input type="checkbox"/> No <input type="checkbox"/> N/A |
| <input type="checkbox"/> Note weekly/post event inspections to be emailed to City? | <input type="checkbox"/> Yes <input type="checkbox"/> No <input type="checkbox"/> N/A |
| <input type="checkbox"/> Video Inspection of any future City maintained Culverts? | <input type="checkbox"/> Yes <input type="checkbox"/> No <input type="checkbox"/> N/A |
| <input type="checkbox"/> Operating Manual for Structural Improvements? | <input type="checkbox"/> Yes <input type="checkbox"/> No <input type="checkbox"/> N/A |
| <input type="checkbox"/> Agreement for Future Maintenance? | <input type="checkbox"/> Yes <input type="checkbox"/> No <input type="checkbox"/> N/A |

NOTES

Signature

Date

MS4 Educational Handouts

Community Partners with Volunteer Opportunities

Stream Team Missouri
<http://www.mostreamteam.org/>

MoDOT Adopt a Highway
<https://www.modot.org/adopt-highway>

Missouri Department of Conservation
<https://mdc.mo.gov/contact-engage/volunteer-opportunities>

Missouri State Parks - Katy Trail
<https://mostateparks.com/page/57875/individual-volunteer-opportunities>

US Department of Energy Weldon Spring
<https://www.energy.gov/im/weldon-spring-site-missouri>

St. Charles County, Missouri
<https://www.sccmo.org/884/Volunteering>



City of Weldon Spring
5401 Independence Road
Weldon Spring, MO 63304
636-441-2110
www.weldonspring.org

Get Involved!

VOLUNTEER OPPORTUNITIES

MS4



City of Weldon Spring
5401 Independence Road
Weldon Spring, MO 63304
636-441-2110
www.weldonspring.org



Volunteer Tree Planting Opportunities

MS4 Volunteer and Involvement Opportunities

A municipal separate storm sewer system (**MS4**) is a publicly-owned conveyance or system of conveyances (i.e., ditches, curbs, catch basins, underground pipes, etc.) designed or used for collecting or conveying stormwater and that discharges to surface waters of the state. Missouri has approximately 162 regulated Municipal Separate Storm Sewer Systems, or MS4s. The City of Weldon Spring is one of approximately 159 regulated MS4s have populations between 1,000 and 100,000 and are regulated under the Master General Permit for Small MS4s (Phase IIs).

The general permit for small MS4s requires the development and implementation of a formal, written Stormwater management program plan or SWMP.

One requirement of the MS4 Permit is providing public participation and involvement opportunities. Providing opportunities for citizens to participate in program development and implementation, including effectively publicizing public hearings and/or encouraging citizen representatives on a stormwater management panel.

Stream Team Cleanups

The City of Weldon Spring partners with Missouri Stream Team to assist in cleanups of our watersheds. The location is typically the Missouri River, a tributary or the Veteran's Memorial County park located in the City.

Tree Planting

Once a year, the City of Weldon Spring gets native Missouri trees from Forest ReLeaf of Missouri to improve the environment on our public spaces. You can help plant a tree for tomorrow!

Bush Honeysuckle Removal

Bush Honeysuckle is an invasive species that is one of the first plants to bloom each spring and last to drop its leaves. As a result it chokes out native plants which leads to erosion. The City partners with Missouri Conservation at nearby Busch Wildlife to train how to properly remove these plants. This is an annual opportunity to learn and then practice what you've learned.

Community Cleanups

The City of Weldon Spring will assist local groups in to clean up public spaces within the City by supplying trash sacks and disposing the filled bags. Contact the City Hall if you'd like to organize a community cleanup.

Missouri River and Park Cleanups



Youth / Scouting / School Projects

The City would be eager to discuss potential projects for individuals or groups to make a positive contribution to the community.

Stormwater / MS4 Plan Volunteers

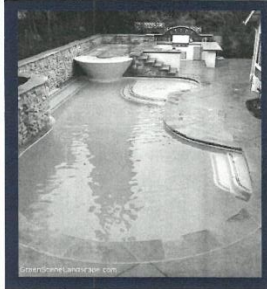
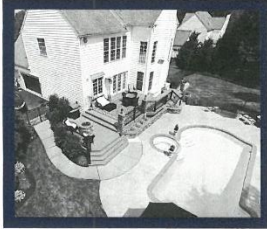
The City has a Storm Water Management Plan and updates it with adaptive management. The City is always looking for ways to adapt to the current times and update our Stormwater Management Plan to make it better.

How to Volunteer

The City is excited about getting you involved improving our community!

If you are interested or want to learn more about these opportunities, please contact the City Engineer at 626-441-2110 or send an email to cityengineer@weldonspring.org.

Volunteer Opportunities in WELDON SPRING, MO



Helpful Contacts:



Weldon Spring City Hall

636.441.2110

St. Charles County Building Division

636.949.7345

Missouri American Water

1.866.430.0820

Duckett Creek

636.441.1244

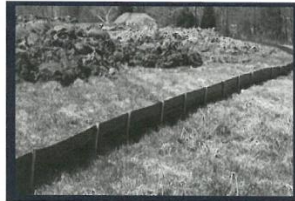
Pool Construction Procedures

Before you start Permitting:

- Review your subdivision Homeowners Association (HOA) restrictions and contact your trustees.
- Obtain an approved multi-purpose land use permit from The City of Weldon Spring.
- Obtain a building permit from St. Charles County.
- Must be at least 10 ft. from the dwelling.
- Must not be closer than 10 ft. to property lines or 5 ft. to easements, whichever is greater.
- Must be located only in your home's rear or side yard.
- Must meet minimum fencing requirements.

What to know During Construction:

- Do not store material or equipment on roadways.
- Put a perimeter siltation fence around excavation paths.
- Follow city ordinances on erosion/sediment control.
- Disturbed areas must be seeded or sodded within 14 days.
- When filling your pool, you cannot use fire hydrants without approval from Missouri American Water.



Siltation fence shall be installed
around the excavation.

Keep in mind Pool Operations:

- A permanent fence surrounding your pool must be built within seven days of completion of the pool.
- Do not release chlorinated water from your pool into the stormwater system.
- Do not discharge saltwater from your pool into stormwater system.
- Do not dispose of any pool cleaning chemicals into the stormwater system.

Important Links

City Ordinances:

www.weldonspring.org

To Report Illicit Discharge:

City Hall: 636.441.2210

Missouri Department of Natural
Resources:

314.416.2960

Door Hanger

Stormwater Pollution Found In Your Area!

This is not a citation.

This is to inform you that our staff found the following pollutants in the storm sewer system in your area. The storm sewer system leads directly to waters of the State and flow to the Missouri or Mississippi River in the City of Weldon Spring. It is against Federal, State and Municipal laws to have illicit discharges into the storm sewer system.

Signs of the following were found in your area:

- ☐ Motor Oil
- ☐ Oil Filters
- ☐ Antifreeze / Transmission Fluid
- ☐ Paint
- ☐ Leaves/ Grass / Yard Waste
- ☐ Pet Waste
- ☐ Concrete / Cement / Mortar
- ☐ Excess Dirt / Rock
- ☐ Construction Debris
- ☐ Cooking Grease
- ☐ Detergents

Other

☐ _____

**For more information or to report any illicit
discharge in your area, please call:**

**City of Weldon Spring
(636) 441-4110**

**For Emergency Spills
Call 911**

Stormwater runoff is precipitation from rain or snowmelt that flows over the ground. As it flows, it picks up debris, chemicals, dirt, and other pollutants and deposits them into a storm sewer system or waterbody.

Anything that enters a storm sewer system is discharged untreated into the waterbodies we use for swimming, fishing, recreation and providing for our drinking water.

Remember only Rain down the Drain!

To keep the stormwater leaving your home or workplace clean, follow these simple guidelines:

- Use pesticides and fertilizers sparingly.
- Repair auto leaks.
- Dispose of household hazardous waste, used auto fluids, and batteries at designated or recycling locations.
- Clean up after your pets.
- Use a commercial car wash or wash your car on a lawn or unpaved surface.
- Sweep up yard debris. Do not blow grass clippings or leaves into the street or drains.
- Clean paint brushes in a sink, not outdoors.
- Sweep up and properly dispose of construction debris like concrete and mortar.



SEDIMENT AND EROSION CONTROL PLAN

Sediment and erosion control and interim grading plans for grading land areas of one (1) acre or more require a Land Disturbance Permit from the Missouri Department of Natural Resources (MoDNR). The City will need a copy of the permit prior to construction. For grading of areas less than one (1) acre, but more than five thousand (5,000) square feet, an erosion control plan need not be submitted, but best practices shall include the placing of sufficient straw bales and/or silt fences to filter the stormwater runoff as it leaves the property. No ground shall remain bare for more than fourteen (14) days after cessation of grading on site. After the grading is complete any disturbed areas on the site shall be seeded and covered with straw to reestablish vegetation within thirty (30) days of completing the grading.

City of Weldon Spring
5401 Independence Road
Weldon Spring, Missouri 63304
636-411-2110

Erosion / Sediment Control Requirements for Small Construction Projects

City of Weldon Spring, Missouri
Community Development

Why is Sediment Control Required?

The purpose of a silt fence is to retain the soil on disturbed land, such as a construction site, until the activities disturbing the land are sufficiently completed to allow revegetation and permanent soil stabilization to begin. Keeping the soil on a construction site, rather than letting it be washed off into natural water bodies (e.g., streams, rivers, ponds, lakes, estuaries) prevents the degradation of aquatic habitats and siltation of harbor channels. And not letting soil wash off onto roads, which readily transport it to storm sewers, avoids having sewers clogged with sediment. The cost of installing silt fences on a watershed's construction sites is considerably less than the costs associated with losing aquatic species, dredging navigation channels, and cleaning sediment out of municipal storm sewers.

PROJECT CHECKLIST

Depending on where your property is located, plans and specifications will need to be submitted for review and approval by several entities. Allow plenty of time for review and approval of your project. It is your responsibility to review all requirements and obtain the proper approval from each agency.

- ☐ Permit from the City of Weldon Spring
- ☐ Permit from St. Charles County
- ☐ Approval from your Home Owner's Association (HOA)

Review all permit requirements and make sure your project is planned and executed accordingly.

Prior to starting construction or excavating:

- ☐ Call Dig Rite at least 3 Days Prior to any excavation work.
1-800-DIG-RITE or 811
- ☐ Install sediment control before starting any excavation work.
- ☐ No mud or dirt shall be tracked on the pavement. Any sediment leaving site must be clean up immediately.
- ☐ Plant temporary seed within 14 days of ground disturbance.
- ☐ After the grading is complete any disturbed areas on the site shall be seeded and covered with straw to reestablish vegetation within thirty (30) days of completing the grading.

CITY ORDINANCES

Construction on your property in the City of Weldon Spring typically requires review and approval by the City of Weldon Spring, St. Charles County and your Homeowner's Association (if applicable).

The City of Weldon Spring has specific ordinances to remain compliant with State and Federal Clean Water laws. Please review [Ord. No. 18-12, 12-11-2018] for more information.

A complete list of City Ordinances can be found at:

[Www.ecode360.com/WE3474](http://www.ecode360.com/WE3474)



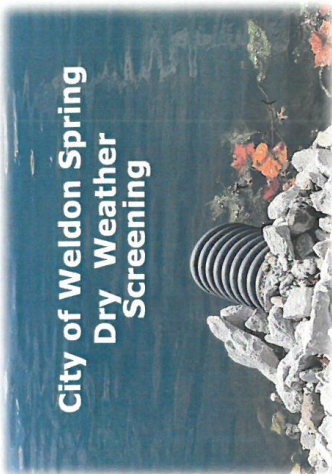
Silt Fence or Straw Bales shall be properly staked around the lower side of any open excavation to prohibit sediment from leaving site.

“Waters of the state”,
all waters within the jurisdiction of this state, including all rivers, streams, lakes and other bodies of surface and subsurface water lying within or forming a part of the boundaries of the state which are not entirely confined and located completely upon lands owned, leased or otherwise controlled by a single person or by two or more persons jointly or as tenants in common. RSMO 644.016 (27)



“Outfall monitoring is important because it is where pollution can get into the waters of the State.”

Sarah Wright, MoDNR



City of Weldon Spring Dry Weather Screening

The City of Weldon Spring has General State Operating Permit MORO4C070 For the City’s Municipal Separate Storm System (MS4)

The City’s Stormwater Management Plan (SWMP) 2021-2026

Has a goal to inspect 75% of the outfalls during the permit period, or 15% annually. Adaptive management is being utilized to refine to the true outfalls.

A copy of the SWMP is located at City Hall at the City Engineer’s Desk. An MS4 Documentation Log is used to document inspections during the year, which are later summarized for the annual report.

City of Weldon Spring
5401 Independence Road
Weldon Spring, Missouri
63304
636-441-2110

The City of Weldon Spring, Missouri has a permit from the Missouri Department of Natural Resources to operate a Municipal Separate Storm Sewer System (MS4).

Part of this permit requires the City to perform dry weather outfall inspections to assure no illicit discharges are going into the waters of the State.

During the 5 year permit cycle, the City has a goal to inspect 60%-75% of our outfalls.

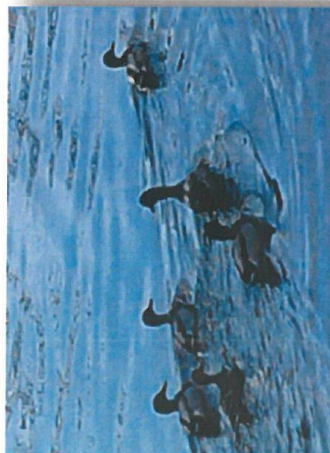
City personnel will be performing these inspections during dry periods, when rain/precipitation has not occurred during the 72 hours before inspections.

The City is responsible for inspecting outfalls owned/maintained by the City of Weldon Spring. These outfalls are all located on land that has drainage easements and storm sewers dedicated and accepted by ordinance to the City of Weldon Spring.

Outfall

Outfall means a point source as defined by 40 CFR 122.2 at the point where a municipal separate storm sewer discharges to waters of the United States* and does not include open conveyances connecting two municipal separate storm sewers, or pipes, tunnels or other conveyances which connect segments of the same stream or other waters of the United States and are used to convey waters of the United States.

*For Missouri's MS4 program, the Waters of the State are utilized for Waters of the United States.



We need clean water upstream to have healthy communities downstream. The health of rivers, lakes, bays, and coastal waters depend on the streams and wetlands where they begin.

Illicit Discharge

40 CFR 122.26 (b)(2) defines an illicit discharge as any discharge to an MS4 that is not composed entirely of stormwater, except allowable discharges pursuant to an NPDES permit, including those resulting from fire fighting activities.

- Sanitary Wastewater
- Industrial
- Commercial Pollutant entries
- Failing septic tank systems and/or
- Vehicle maintenance activities
- Accidental or Purposeful

Illicit Discharge Detection and Elimination (IDDE) – To find, fix and prevent illicit discharges.

Dry Weather Inspections

Inspections will look for any flow during dry periods. The inspector will record any odors, color, turbidity, floatables, deposits, stains and will take a sample if any illicit discharge is detected. The ph and temperature of any flow may be recorded. The volume of flow will be estimated.

A map of the storm sewer system is useful to help trace the source of the illicit discharge.

Environmental Protection Agency (EPA) – A government agency concerned with the American environment and its impact on human health.

Illicit Discharge – Any discharge to an MS4 that is not composed entirely of stormwater, except those discharges authorized under National Pollutant Discharge Elimination System (NPDES) permit – other than the NPDES permit for discharges from the MS4 – and discharges from fire fighting activities.

Pollutant – Anything that causes or contributes to pollution. Pollutants may include, but are not limited to: paints, varnishes, solvents, oil and other automotive fluids, non-hazardous liquid and solid wastes, yard wastes, refuse, rubbish, garbage, litter or other discarded or abandoned objects, floatable materials, pesticides, herbicides, fertilizers, hazardous materials, wastes, sewage, dissolved and particulate metals, animal wastes, residues that result from constructing a structure, and noxious or offensive matter of any kind

CRF—Code of Federal Regulations

MS4—Municipal Separate Storm Sewer System

MoDNR—Missouri Department of Natural Resources.

NPDE - National Pollutant Discharge Elimination System

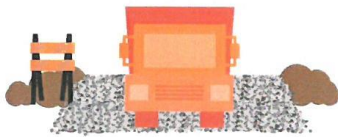
RSMO - Revised Statutes of Missouri



STORMWATER SMART CONSTRUCTION SITES COMMUNITY DEVELOPMENT



When water from rain, snow, or sleet flows over the ground it's called "stormwater." Stormwater can pick up sediment, chemicals, and oil as it travels over the ground on your job site. And when that stormwater flows into street gutters, storm drains, and downstream, it can pollute rivers, lakes, and streams. Follow these simple pollution solutions to help keep local waterways clean and healthy!



STOP MUD IN ITS TRACKS

Sediment clogs drains and pollutes stormwater. Install and maintain a pad at the construction entrance so vehicles don't track mud and dirt onto roads.



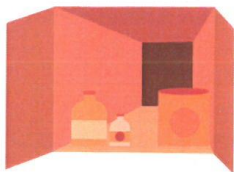
FENCE IN THE FLOW

Install silt fences or other barriers on the downhill portion of construction sites and soil stockpiles to prevent rain from washing soil and sediment downstream.



KEEP INLETS CLEAN

Install inlet protection around storm drains to keep loose sediment and muddy water out of storm sewer pipes.



STORE STUFF SAFELY

Keep paint, fuel, and chemicals in dry, covered storage areas. Properly dispose of these liquids in designated areas and use concrete washout areas for concrete waste.

City of Weldon Spring

www.weldonspring.org

636-441-2110

2022 Construction Permits

MS4 BMP's provided to 100% of all grading/excavation/pool permit holders.

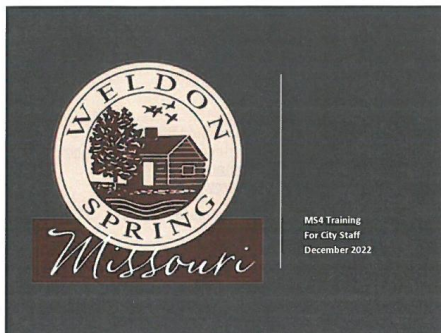
Land Use Permits issued for Years 2019 -2022

	<u>2019</u>	<u>2020</u>	<u>2021</u>	<u>2022</u>
Houses	6	5	2	10
Decks	23	30	32	21
Pools	18	23	16	18
Demolitions	2	2	2	3
Retaining Walls	7	10	7	7
Accessory Structures	12	14	18	7
Additions	3	1	1	3
Other	6	3	3	5
LUP Total	77	88	81	74
Signs	14	6	12	14
No Cost LUP's	29	42	56	50
Overall Permit Total	120	136	149	138

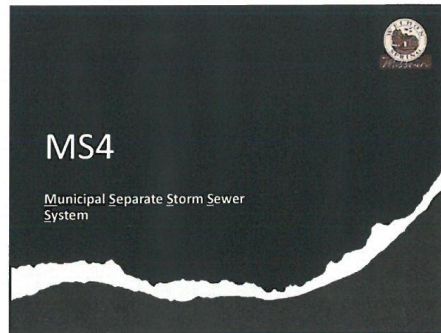
MS4 PowerPoints and Presentations

December 2022 Staff Training

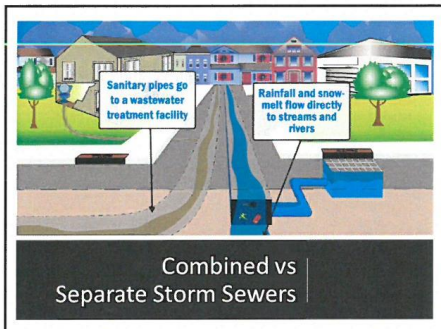
1/9/2023



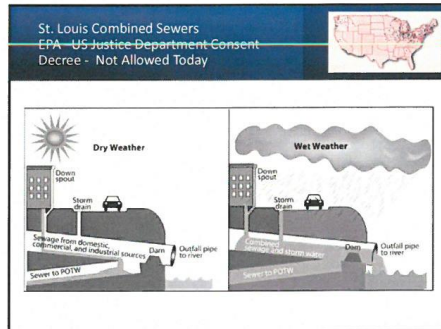
1



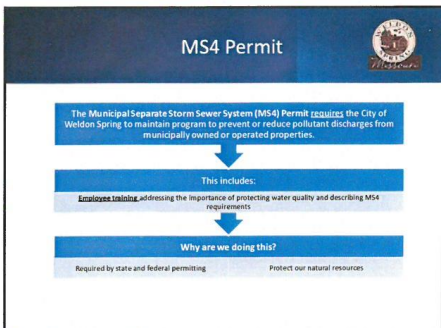
2



3



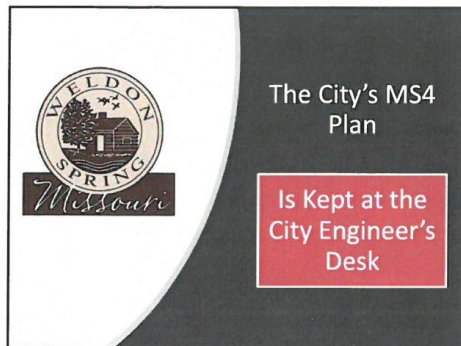
4



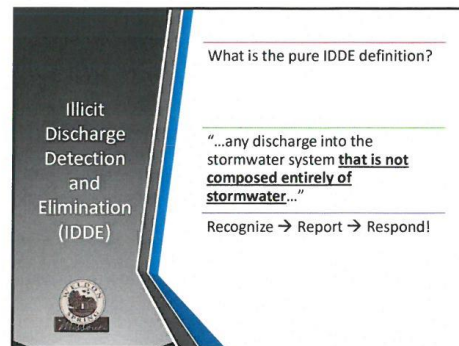
5



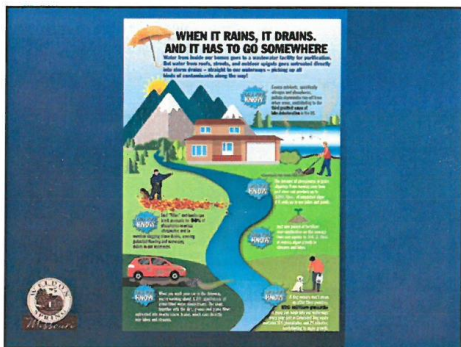
6



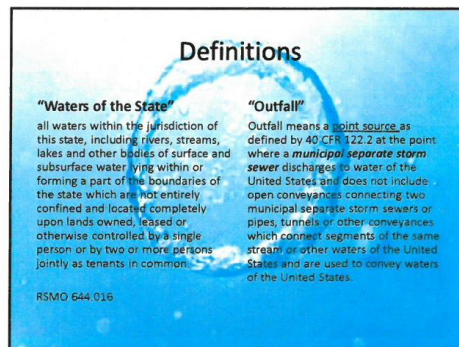
7



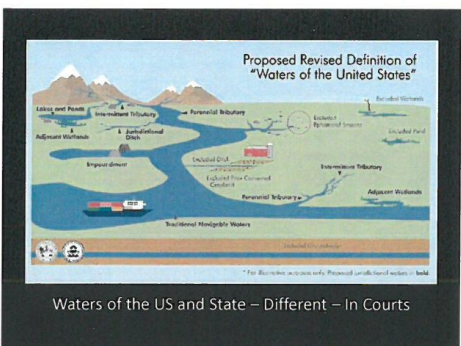
8



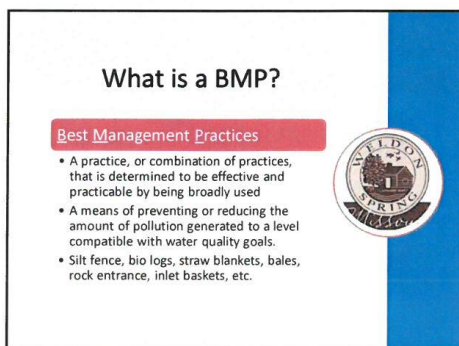
9



10

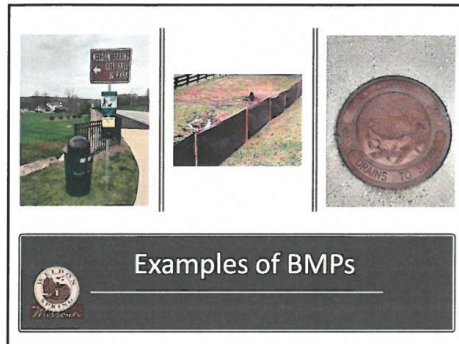


11

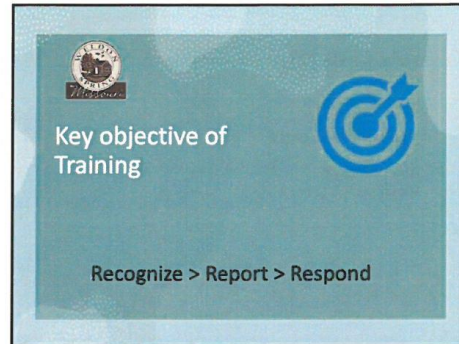


12

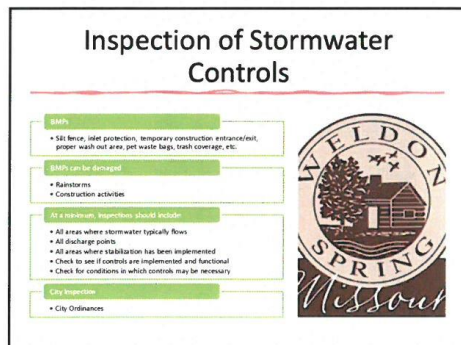
1/9/2023



13



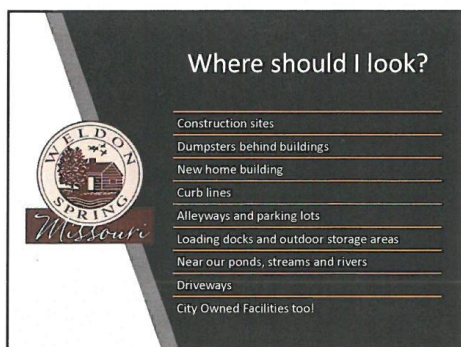
14



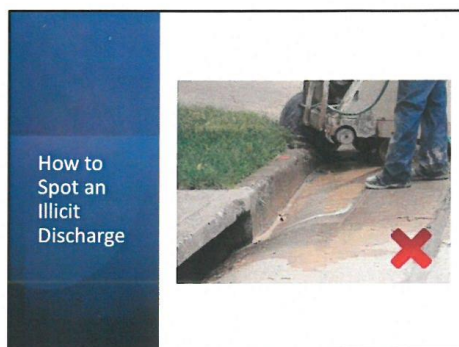
15



16

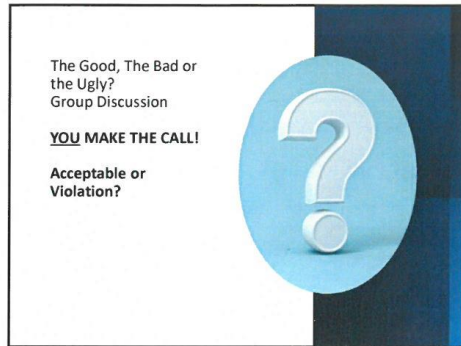


17



18

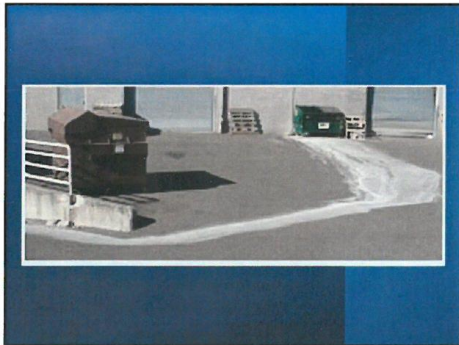
1/9/2023



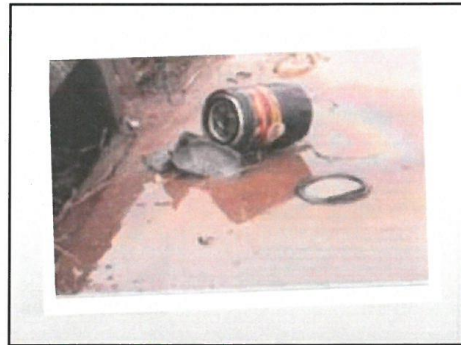
19



20



21



22



23



24

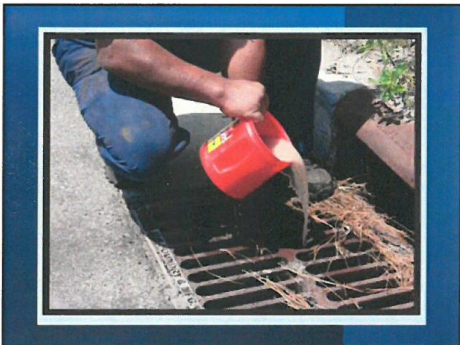
1/9/2023



25



26



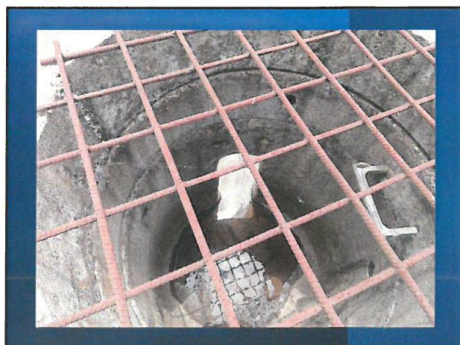
27



28



29

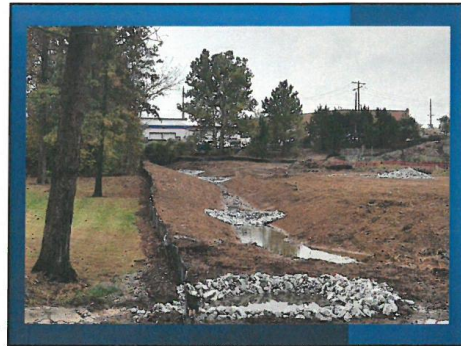


30

1/9/2023



31



32



33



34



35



36

1/9/2023



37



38



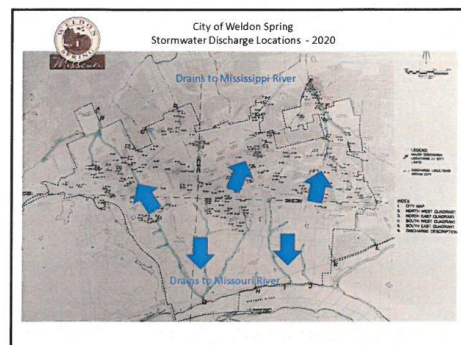
39



40



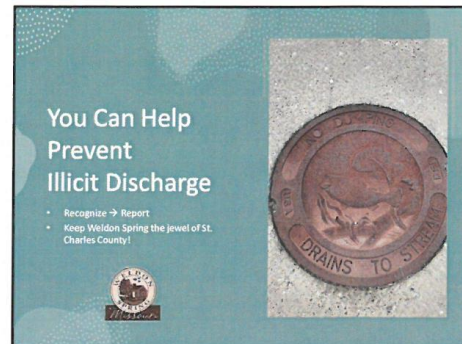
41



42

Outfall System Tracing

43



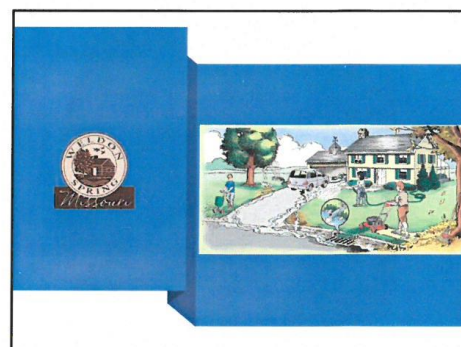
44

Equipment & Vehicle Washing

TAKE VEHICLES TO PROFESSIONAL CAR WASH

- The EPA considers wash water to be a non-stormwater discharge (i.e. illicit discharge); therefore, wash water from a facility must be directed to a sanitary sewer or treated on-site prior to discharge. MS4s often own and maintain their own fleet of vehicles that may include cars, tractors, trucks, parks equipment, and other types of vehicles.

45



46

What is the difference between environmental concerns and environmental emergencies?

- An environmental concern is a situation that you believe threatens the environment, such as a trash dump or discarded waste tires in a stream, knocked down silt fence, blowing leaves in inlet...
- An environmental emergency poses an immediate threat to the public health or the well-being of the environment. Examples of environmental emergencies include:
 - Oil and chemical leaks or spills
 - Radiological and biological discharges
 - Accidents causing releases of pollutants
 - Fish kills
 - Hazardous material incidents

47


What to Do

- If you see something that looks wrong or have an environmental concern...
 - Report it immediately to the City Administrator and/or City Engineer.
 - Educate, Inform, Use a door hanger for minor issues.
- If it is a spill with immediate health and safety concerns, if you are involved in or witness an environmental emergency, and the City Engineer and City Administrator are not available, please call the Missouri Department of Natural Resources at 573-634-2436.
- Recognize and Report!

48

1/9/2023

2022 Incidents




- 12/9/2022
- Resident Complaint about home remodeling contractor.
- Investigation found cement stains around curb inlet. Inside inlet was fresh pile of concrete and other concrete debris.
- Next inlet had cement stains.
- Summons issued to Contractor.
- Contractor performed clean up.



49

2022 Incidents

On the Lookout for Illegal Discharges — detection




Westchester Farm Home Contractor
Issued Ticket for Illicit Discharge of Concrete/Cement into Stormwater System. Fall 2022


50

Current Land Disturbance Permits with MoDNR > 1 Acre / December 2022

New Perspective
400 Siedentop
Starting Fall 2022



Scrubbles Car Wash
Triad Crossing Center
Starting Spring 2022



Storm Water Pollution Prevention Plan (SWPPP) onsite and Weekly and Post Storm Reporting Required – Special Focus on Inspection required. Certified Inspectors Required.

51




Weekly & Post Event Inspections by EPA Certified Inspectors




52

2022 Incidents

On the Lookout for Illegal Discharges — detection



Cement stains inside next inlet.

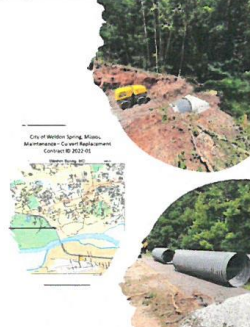


Solid concrete debris and pile of fresh concrete in inlet.

53

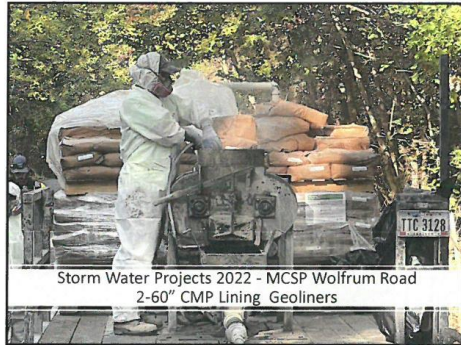
Storm Water Projects 2022

- Corrugated Metal Pipes (CMP) have a 50 years/ life.
- St. Charles County Highway reported several CMP culverts were failing.
- One 60" CMP needed replacement.
- Kolb Grading was low bid to replace culvert between Patriotic and I-64
- Two other 60" CMP Culverts could still be restored before failing.



54

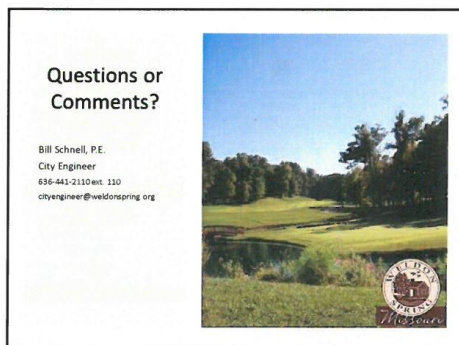
1/9/2023



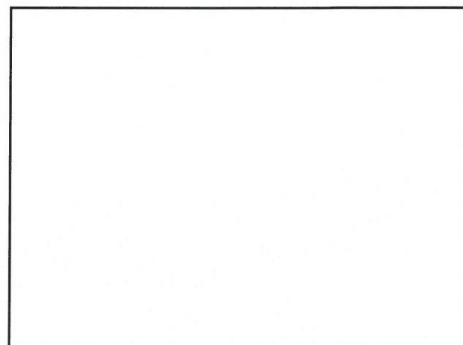
55



56



57



58

MS4 Staff Training – December 29, 2022

Attendance Sign In-Sheet

Name	Title	Signature
Bill Schnell	CITY ENGINEER	[Signature]
Howie Milwerger	Park Spec	[Signature]
Bob Abbott	Parks SUPERINTENDENT	Bob Abbott
Steve Lauer	City Planner	Steve Lauer
Zachary Mitchell Sordani	Community Relations Manager	[Signature]
Sue Steigen	CITY TREASURER	Sue Steigen
Laura Brown	Court	Laura Brown
Mark Rockemann	CODE Enforcement	[Signature]

City of Weldon Spring
12/29/2022
MS4 Test for City Staff

MS4 stands for:

- ☐ Metropolitan Signs for Traffic
- ☒ Municipal Separate Storm Sewer System
- ☐ Metropolitan Sewers For Cities

What can be flushed down a Storm Sewer System? (Check all that apply)

- ☒ Storm Water
- ☐ Car Wash Water
- ☐ Cement from Construction Site
- ☐ Transmission Fluid

If a semi-tractor trailer crashes on a City road and is leaking fluids into the storm water drainage system you should: (Check all that apply)

- ☐ Do Nothing
- ☒ Call the 24-Hour Emergency Response Spill Line at 573-634-2436 or 800-424-8802.
- ☒ Call 911.
- ☒ Notify City Hall and the Storm Water Manager

A municipal storm sewer system Outfall is: (check one)

- ☐ A septic system drain field.
- ☐ A fire hydrant nozzle.
- ☐ A manhole lid.
- ☒ The location where a municipal separate storm sewer system discharges to waters of the State.

The City of Weldon Spring's MS4 Plan is kept:

- ☐ In the City Park Building
- ☒ At the City Engineer's Desk
- ☐ In the City Truck
- ☐ In the basement of City Hall

What input or changes do you recommend for the City of Weldon Spring's MS4 Plan:

City Ordinances

All City Ordinance can be found online at:

<https://ecode360.com/WE3474>

2022 MS4 Log Summary

1/9/2023

A	B	C	D	E	F	G	H
DATE	MCM #1 Public Education and Outreach	MCM #2 Public Participation and Outreach	MCM #3 Illicit Discharge Detection and Elimination	MCM #4 Construction Site Runoff Control	MCM #5 Post-Construction Runoff Control	MCM #6 Pollution Prevention Good Housekeeping	NOTE
1/11/2022					Detention Basin Inspection - Camelot - Cornwall Drive		
1/11/2022					Detention Basin Inspection - Camelot - Meritt Drive		
1/11/2022					Detention Basin Inspection - Camelot - Perceval		
1/11/2022					Detention Basin Inspection - Camelot - Enchanted		
1/11/2022					Lake Inspection - Camelot - Camelot Drive		
1/18/2022				30 Dutchman Land Disturbance Permit MORA16170 Terminated			
2/15/2022				Summary Review of active/inactive permits	Detention Basin Inspection - Kolb Grading, Inc.		
1/31/2022				All DNR Land Disturbance Permits expired on February 7th			Annual Report Submitted On- Line eDMR
2/7/2022							
2/10/2022	Spring Newsletter on Park Cleanup Volunteer Opportunity and Earth Day						
3/14/2022	MS4 Article in Spring Newsletter on rain gardens, mulching, fertilizer, car wash water, septic system, pet waste, dumpster and trash can lids.						
3/14/2022							
3/15/2022					Detention Basin Inspection - Mansons of Lucerne - Lucerne place		
3/30/2022					Detention Basin Inspection - QT - O Fallon Road		
3/31/2022					Detention Basin Inspection - Midland Bank		
3/31/2022			Outfall Inspection - Cedar Knoll - B-68				
3/31/2022			Outfall Inspection - Cedar Glen Ridge Ct. - B-69				
3/31/2022			Outfall Inspection - Chapter One Outfall to Lake B-22				
4/4/2022			Outfall Inspection - Fabtech Outfall to Lake - O Fallon Road				
4/4/2022			Outfall Inspection - Chapter One B-11 to Siedentop R/W - Siedentop Road				
4/4/2022			Outfall Inspection - Chapter One B-10 to Siedentop R/W - Siedentop Road				
4/4/2022							
4/6/2022						Park Inspection	

PERMIT # MORA0076

CITY OF WILCOX SPRING

MS4 DOCUMENTATION LOG SUMMARY 2022
SEE DOCUMENTATION SHEETS FOR MORE DETAIL

1/9/2023

A	B	C	D	E	F	G	H
DATE	MCM #1 Public Education and Outreach	MCM #2 Public Participation and Outreach	MCM #3 Illicit Discharge Detection and Elimination	MCM #4 Construction Site Runoff Control	MCM #5 Post-Construction Runoff Control	MCM #6 Pollution Prevention Good Housekeeping	NOTE
4/18/2022			Outfall Inspection - Walmar Outfall to 820 O'Fallon Road Parcel		Detention Basin Inspection - Walmar Detention Basin - 5749 Westwood Drive		
4/18/2022			Outfall Inspection - Hunter's Green Detention Basin Outfall to Creek B-28		Detention Basin Inspection - Hunter's Green - Mergenthal Road		
4/19/2022			Outfall Inspections - Westchester Meadows D-23, D-24, D-25, D-26, G-14		Detention Basin Inspection - Hoffman Ford Basin		Apparent Modifications to some outfall structures. Working with HOA to correct.
4/23/2022	Park Cleanup and Removal of Invasive Honeysuckle - 12 volunteers, 40 native plants installed, 1/8 acres brush cleared.						
4/28/2022			Pool water discharge investigation at 5759 Halifax Bend Ct.				
6/2/2022			Pool water discharge investigation at 5107 Haydon - City of St. Peters.				
6/13/2022	MS4 Article in Summer Newsletter on Organics (leaves, grass, etc.) in stormwater discharge.						
6/13/2022	Earth Day Cleanup article in Summer Newsletter.						
6/30/2022			Outfall Repair at Cedar Knoll G-68. Replaced pipe and rock energy diffuser.				
7/14/2022					Detention Basin Inspection FHSD 825 O'Fallon		
7/14/2022					Detention Basin Inspection FHSD Preschool - Meadows Parkway		
7/14/2022					Detention Basin Inspection FHSD Elementary - Meadows Parkway.		
7/22/2022				Land Disturbance Permit issued at 400 Siedentop - MOR 22138			Grading Permit not issued. Weekly reports will start when construction starts.
8/4/2022					City Park Pond - Forebay Inspection - 5401 Independence		
8/4/2022			Investigate work in creek - 16 New Haven. USACE Permit was issued for work completed over a year prior.				
8/8/2022						City purchase 10,000 pet waste bags for distribution sites along trails / sidewalks in the City.	
9/8/2022					Detention Basin Inspection 5881 Canterfield		

PERMIT # MCM40076

CITY OF WELDON SPRING

MS4 DOCUMENTATION LOG SUMMARY 2022
SEE DOCUMENTATION SHEETS FOR MORE DETAIL

1/6/2023

A	B	C	D	E	F	G	H
DATE	MCM #1 Public Education and Outreach	MCM #2 Public Participation and Outreach	MCM #3 Illicit Discharge Detection and Elimination	MCM #4 Construction Site Runoff Control	MCM #5 Post-Construction Runoff Control	MCM #6 Pollution Prevention Good Housekeeping	NOTE
9/8/2022			Outfall Inspection - Private - 820 O'Fallon Road B-49		Detention Basin Inspection - 5749 Westwood		
9/8/2022					City Pond - Inspection - pH 7.42, temperature 76.1		
9/13/2022					Detention Basin Inspection - Crosshaven		
9/13/2022					Detention Basin Inspection - Gray Oaks		
9/13/2022			Outfall Inspection - Private - Camelot - G-25 Enchanted				
9/19/2022			Outfall Inspection - Private - Camelot G-24 Merlin				
9/19/2022					Detention Basin Inspection - FHSD Elementary - Meadows Pkwy		
9/20/2022					Detention Basin Inspection - Dairy Queen - Weldon Spring Pkwy		
9/20/2022					Detention Basin Inspection - FHSD Early Childhood - Meadows Pkwy		
9/20/2022	Fall Newsletter on Stormwater Drainage - to all residents and businesses.						
9/29/2022	Stormwater Article posted on City Website on yardwaste proper disposal.						
10/5/2022							
10/11/2022					Detention Basin Inspection - Lutheran Senior Services - Breeze Pkwy.		
10/11/2022			5296 Roanoke Drive - Floating Plastic Tank - Illicit Discharge Investigation.		Detention Basin Inspection - Ehlmann Farms		
10/18/2022			Resident Report of leaves by inlet 5781 Westchester Farm - McGraw Millhaven				
11/8/2022						Street Sweeping on Wolfrum Road and Independence	
11/8/2022	MS4 BMP Weldon Spring Outfall Handout Brochure						
11/14/2022	Winter Newsletter - Detention/Retention Basin Maintenance						
11/15/2022	HOA Meeting providing Directors with Maintenance of BMP requirements.						
11/19/2022							
11/29/2022				Land Disturbance Permit issued to Scrubbies, LLC for 1010 Wolfrum Road. MORA23055		Park Inspection	
11/30/2022							

MS4 DOCUMENTATION LOG SUMMARY 2022
SEE DOCUMENTATION SHEETS FOR MORE DETAIL.

CITY OF WELDON SPRING

PERMIT # MORA60076